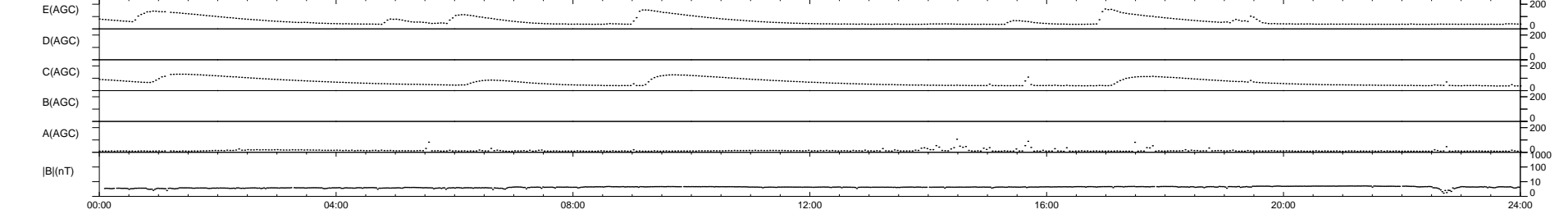
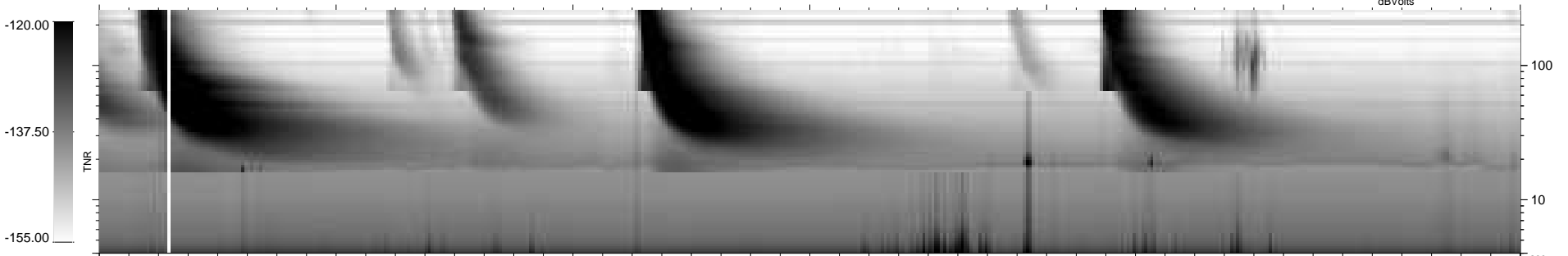
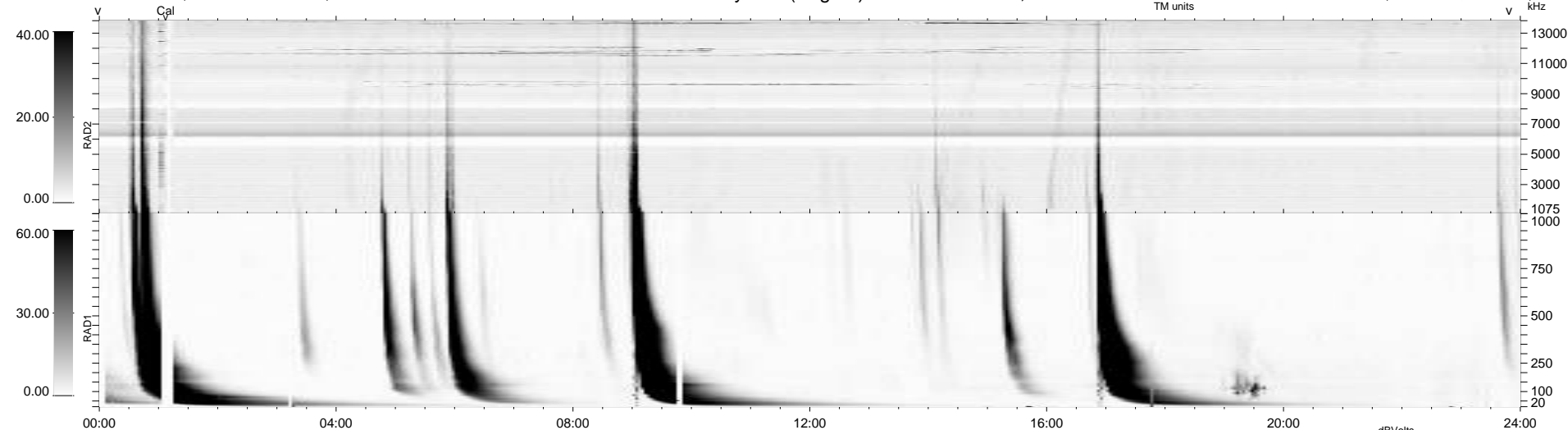


7 bad + 932 good MF/939MF projected (99%) - 0 missing MFs
 Avg interval = 180 secs
 Re = - 208.91 (202.84, 46.61, -18.13 GSE)

windlib 2.0b LZ version = v02
 DAILY 2011-08-29 17:02:08
 Re = 209.92 (203.13, 49.89, -17.78 GSE)

WIND/WAVES Summary Plot (Page 1) for 26-AUG-2011, DOY = 238



RAD2
 Antenna Ey
 Mode LIN(1)
 SUM/SEP SEP
 Toggle OFF
 RAD1
 Antenna
 Mode
 SUM/SEP
 Toggle
 TNR
 Antenna ExEy
 Mode A-32
 Sweep ACE