

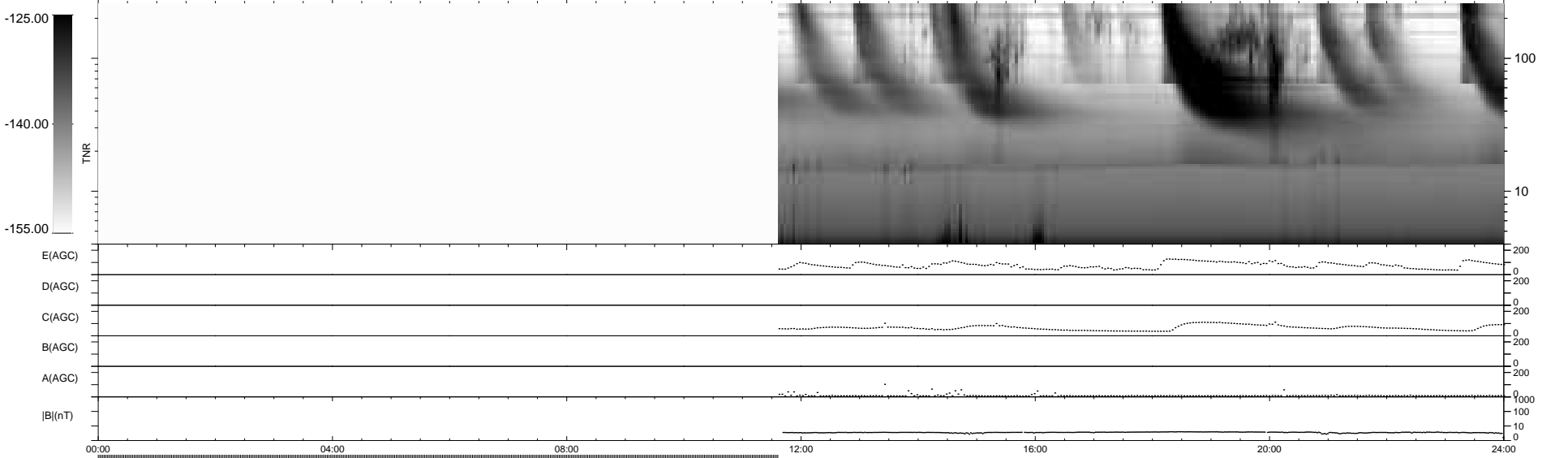
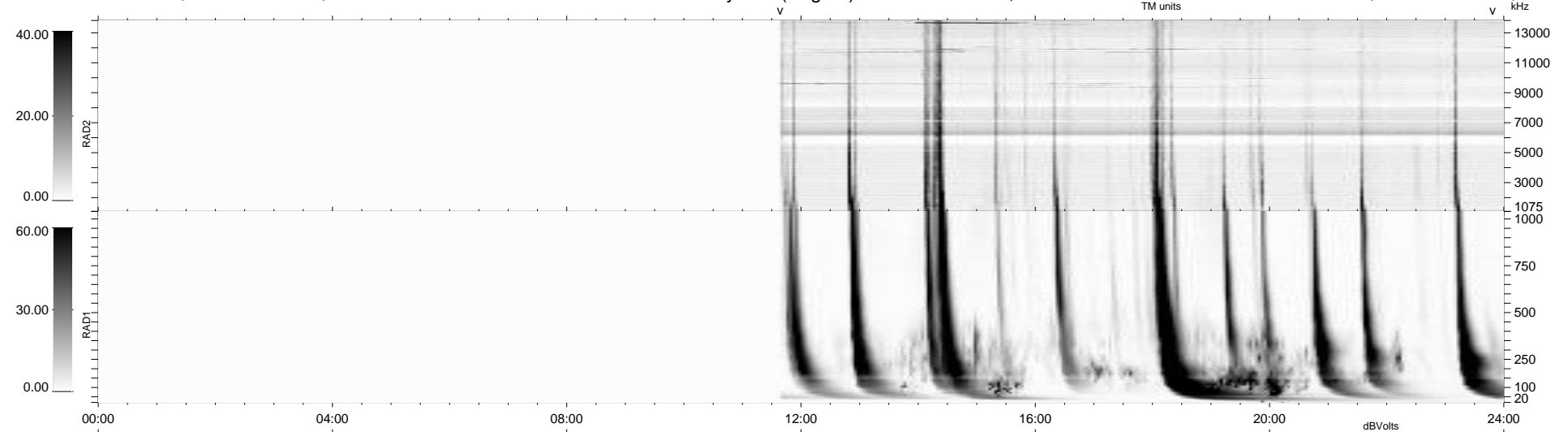
4 bad + 481 good MF/940MF projected (51%) - 455 missing MFs
Avg interval = 180 secs
Re = 208.40 (202.69, 44.89, -18.29 GSE)

windlib 2.0b

LZ version = v01

WIND/WAVES Summary Plot (Page 1) for 25-AUG-2011, DOY = 237

DAILY 2011-08-28 02:02:05
Re = 208.90 (202.84, 46.59, -18.13 GSE)



RAD2 Antenna Mode SUM/SEP Toggle
RAD1 Antenna Mode SUM/SEP Toggle
TNR Antenna Mode Sweep