

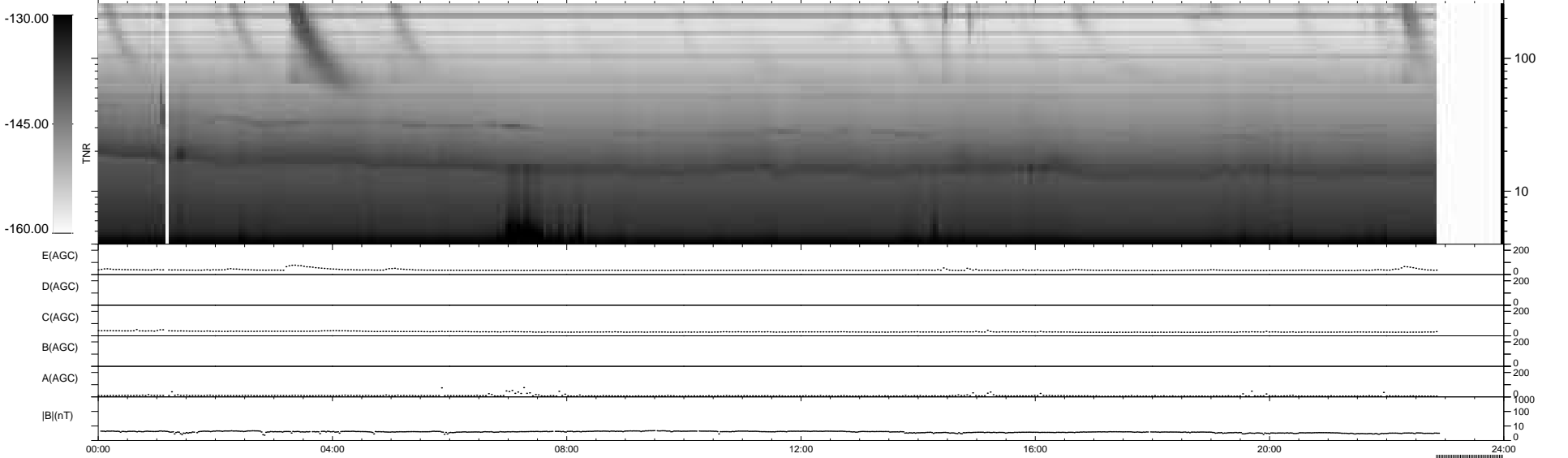
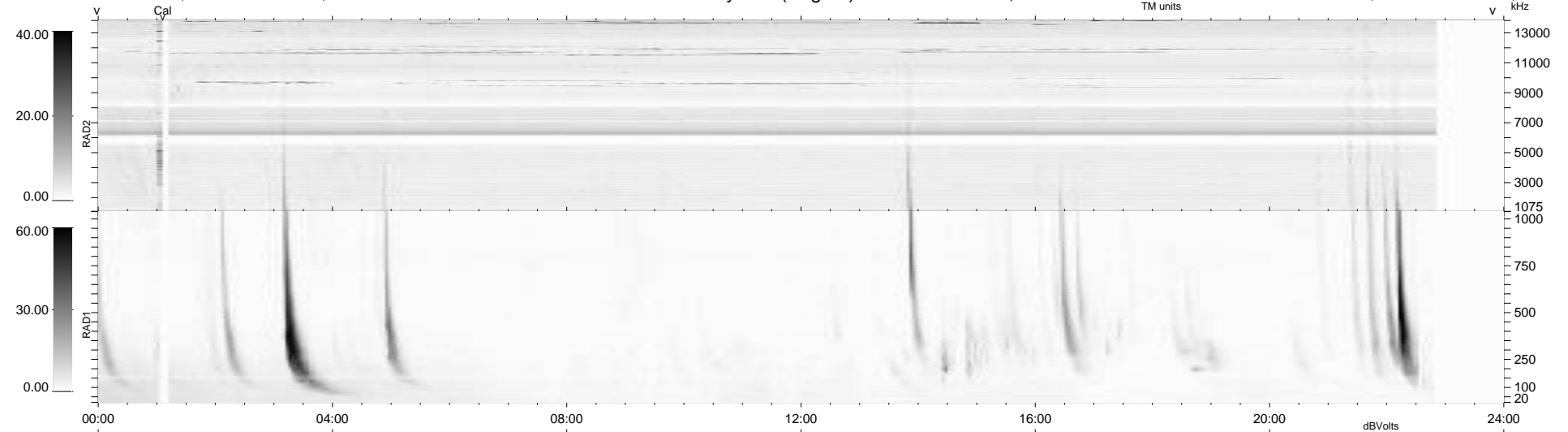
10 bad + 884 good MF/939MF projected (94%) - 45 missing MFs
 Avg interval = 180 secs
 Re = 207.00 (202.26, 39.86, -18.74 GSE)

windlib 2.0b

LZ version = v01

WIND/WAVES Summary Plot (Page 1) for 24-AUG-2011, DOY = 236

DAILY 2011-08-26 10:02:06
 Re = 207.93 (202.54, 43.23, -18.45 GSE)



```

RAD2
Antenna Ey .....
Mode LIN(1) .....
SUM/SEP SEP .....
Toggle OFF .....

RAD1
Antenna Ex .....
Mode LIS(2,4) .....
SUM/SEP SUM .....
Toggle OFF .....

TNR
Antenna ExEy .....
Mode A-32 .....
Sweep ACE .....
  
```