

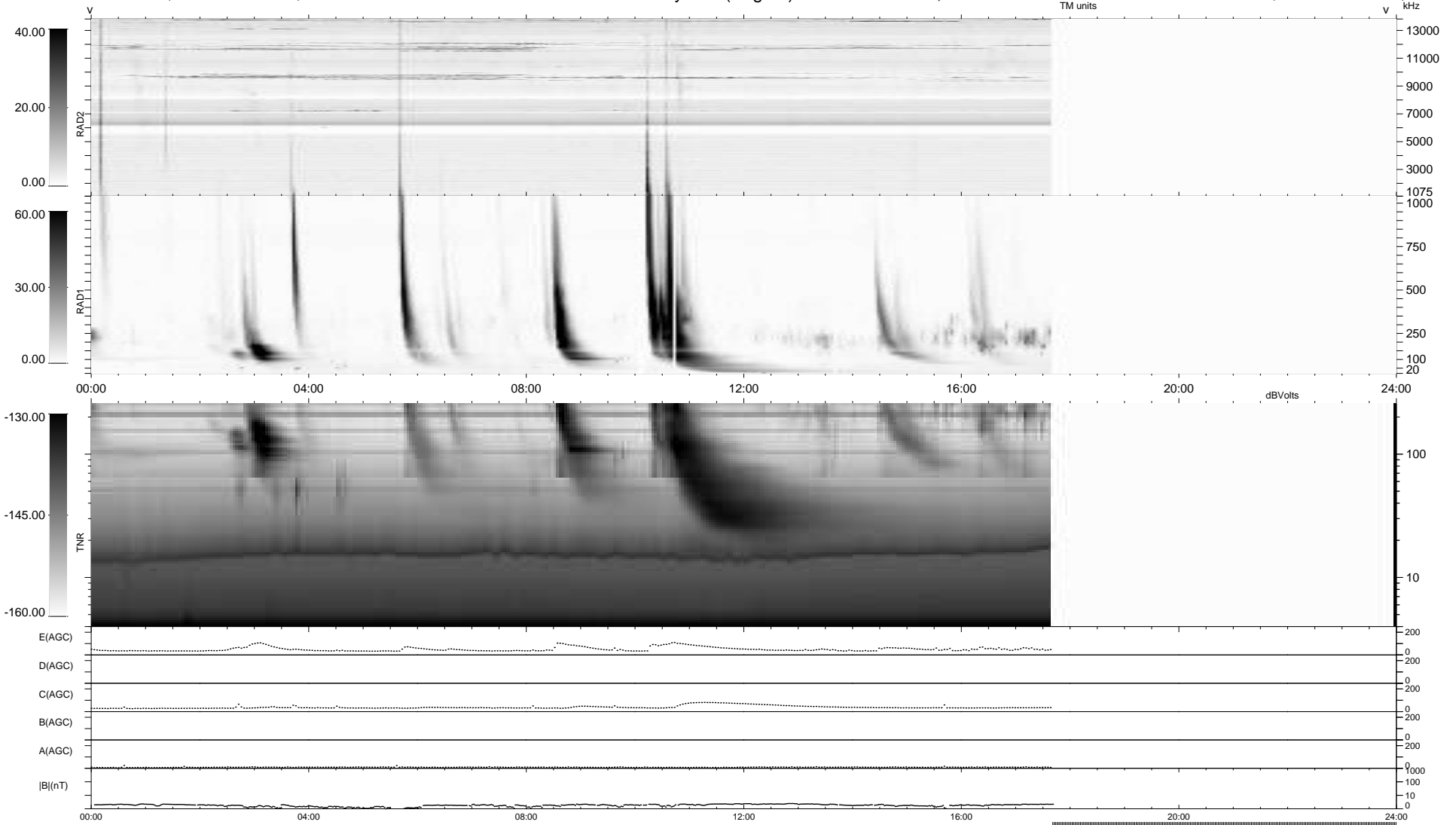
10 bad + 681 good MF/939MF projected (72%) - 248 missing MFs
 Avg interval = 180 secs
 Re = - 201.97 (200.93, -5.64, -19.74 GSE)

windlib 2.0b

LZ version = v01

WIND/WAVES Summary Plot (Page 1) for 11-AUG-2011, DOY = 223

DAILY 2011-08-12 20:02:06
 Re = 201.79 (200.80, -2.12, -19.85 GSE)



RAD2
 Antenna Ey
 Mode LIN(1)
 SUM/SEP SEP
 Toggle OFF
 RAD1
 Antenna Ex
 Mode LIS(2,4)
 SUM/SEP SUM
 Toggle OFF
 TNR
 Antenna ExEy
 Mode A-32
 Sweep ACE