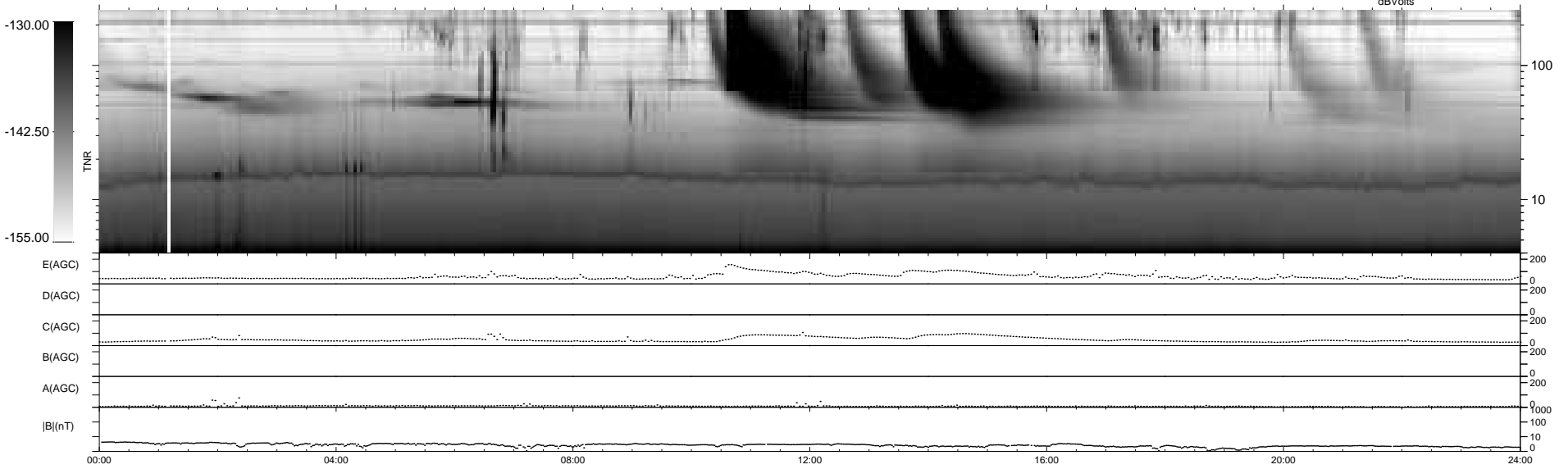
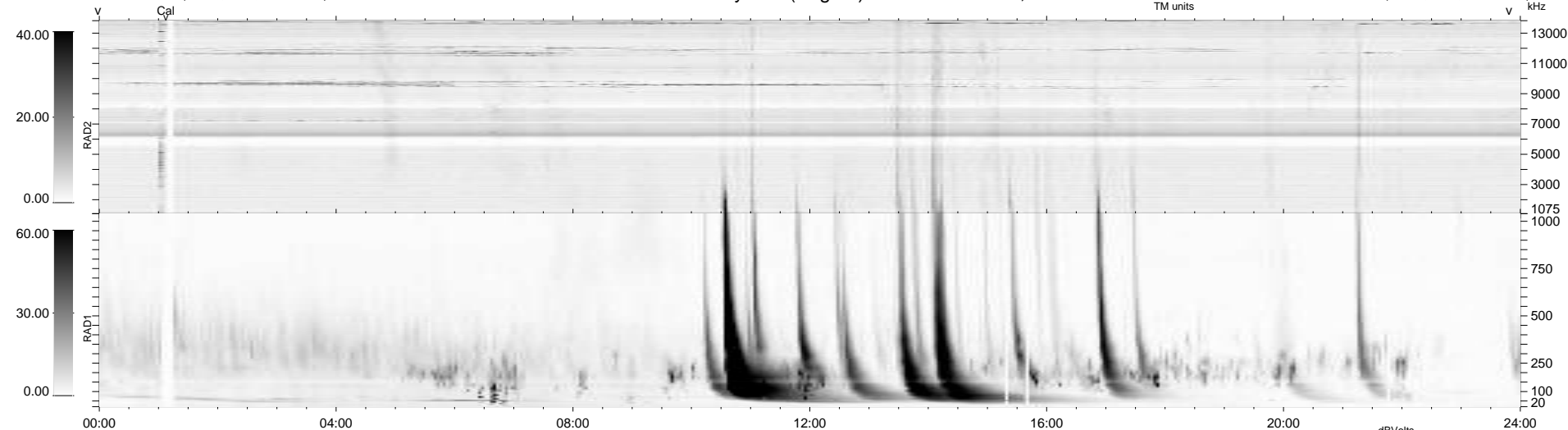


7 bad + 933 good MF/940MF projected (99%) - 0 missing MFs
 Avg interval = 180 secs
 Re = 202.26 (201.10, -9.20, -19.60 GSE)

windlib 2.0b LZ version = v01
 DAILY 2011-08-26 00:08:55
 Re = 201.98 (200.93, -5.66, -19.74 GSE)

WIND/WAVES Summary Plot (Page 1) for 10-AUG-2011, DOY = 222



```

RAD2
Antenna Ey .....
Mode LIN(1) .....
SUM/SEP SEP .....
Toggle OFF .....

RAD1
Antenna Ex .....
Mode LIS(2,4) .....
SUM/SEP SUM .....
Toggle OFF .....

TNR
Antenna ExEy .....
Mode A-32 .....
Sweep ACE .....
  
```