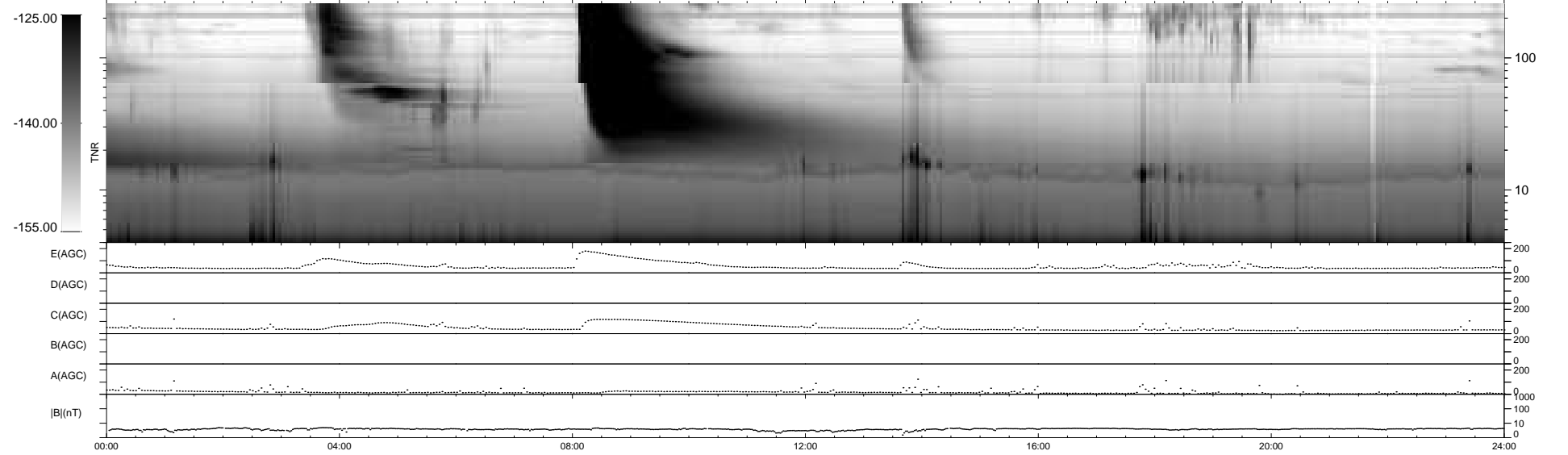
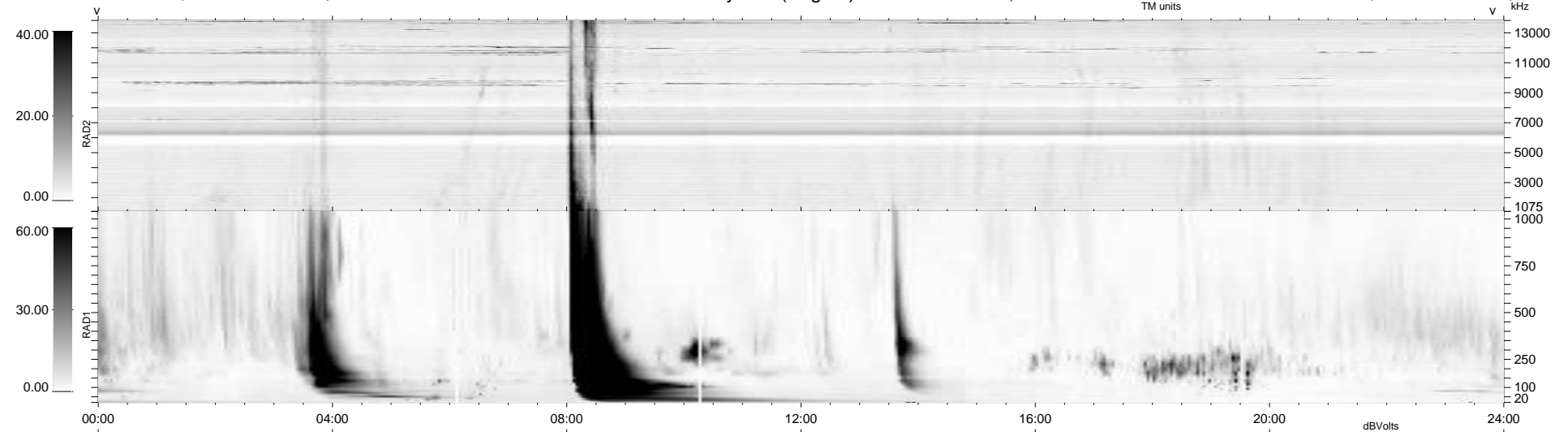


6 bad + 933 good MF/939MF projected (99%) - 0 missing MFs  
 Avg interval = 180 secs  
 Re = - 202.65 (201.31, -12.76, -19.43 GSE)

windlib 2.0b LZ version = v01  
 DAILY 2011-08-26 00:07:57  
 Re = 202.26 (201.10, -9.22, -19.60 GSE)

### WIND/WAVES Summary Plot (Page 1) for 09-AUG-2011, DOY = 221



```

RAD2
Antenna Ey .....
Mode LIN(1) .....
SUM/SEP SEP .....
Toggle OFF .....

RAD1
Antenna Ex .....
Mode LIS(2,4) .....
SUM/SEP SUM .....
Toggle OFF .....

TNR
Antenna ExEy .....
Mode A-32 .....
Sweep ACE .....
  
```