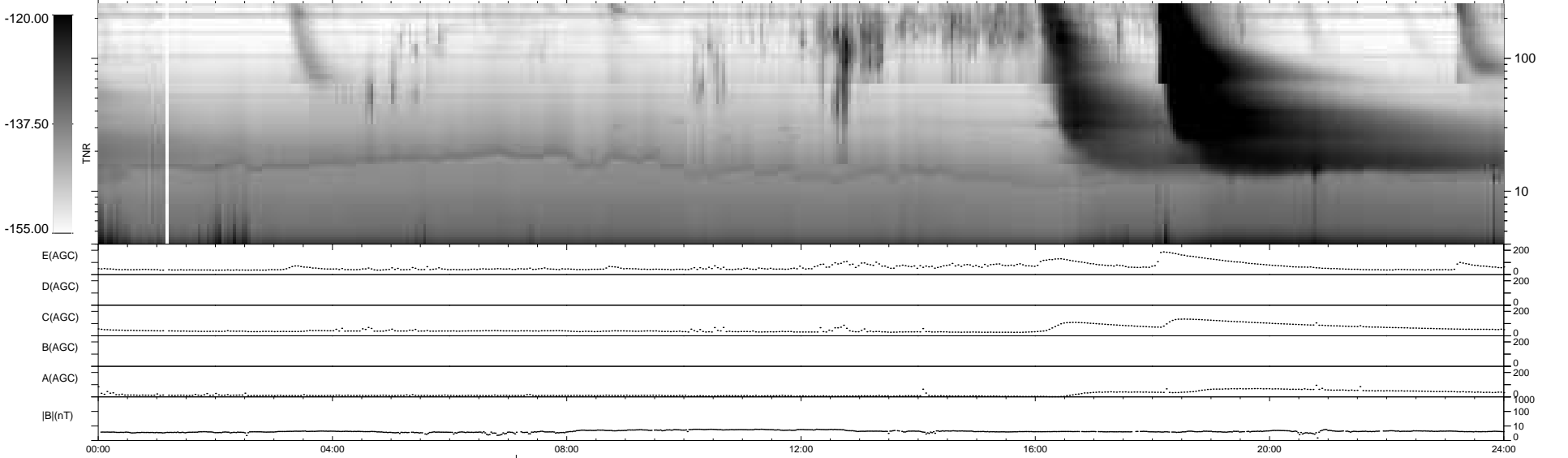
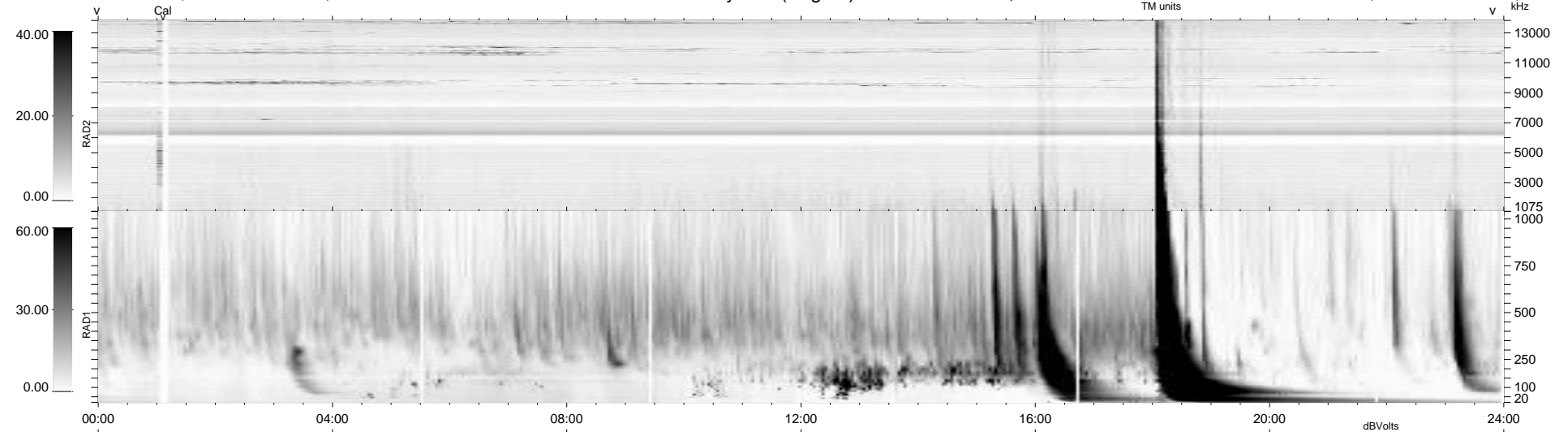


17 bad + 921 good MF/939MF projected (98%) - 1 missing MF  
 Avg interval = 180 secs  
 Re = - 203.13 (201.56, -16.34, -19.22 GSE)

windlib 2.0b LZ version = v02  
 DAILY 2011-08-26 00:07:00  
 Re = 202.65 (201.31, -12.79, -19.42 GSE)

### WIND/WAVES Summary Plot (Page 1) for 08-AUG-2011, DOY = 220



RAD2  
 Antenna Ey  
 Mode LIN(1)  
 SUM/SEP SEP  
 Toggle OFF

RAD1  
 Antenna Ex  
 Mode LIS(2,4)  
 SUM/SEP SUM  
 Toggle OFF

TNR  
 Antenna ExEy  
 Mode A-32  
 Sweep ACE