

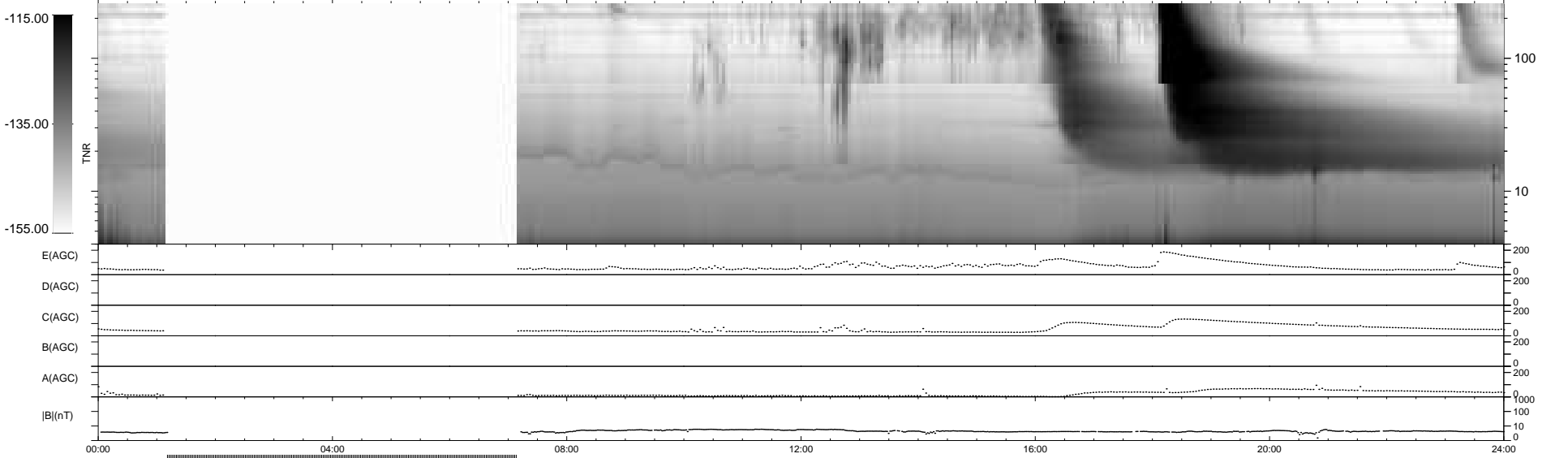
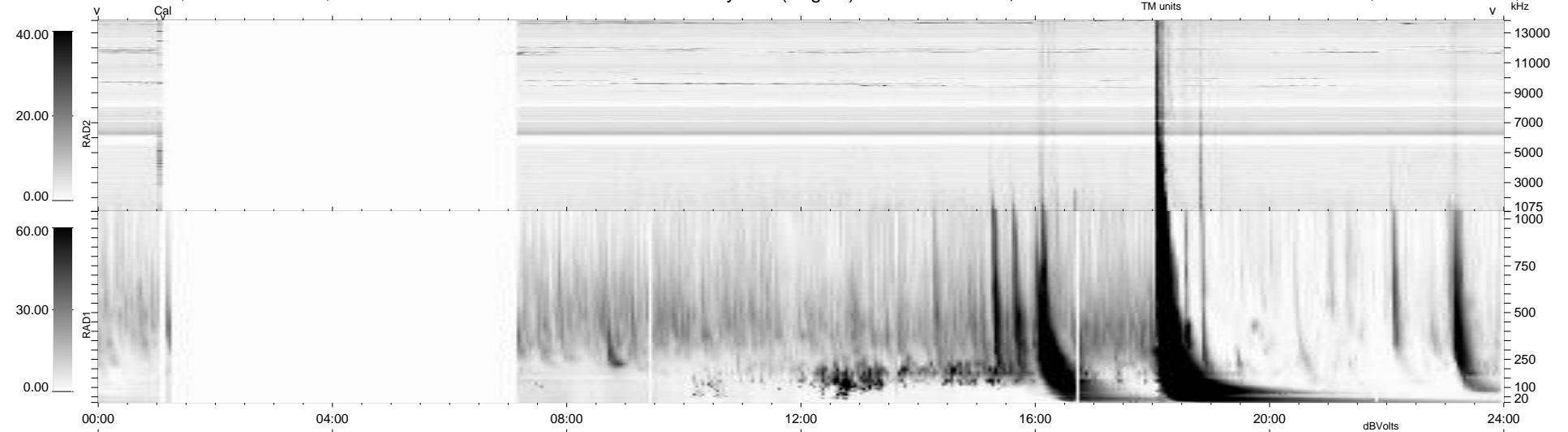
15 bad + 690 good MF/939MF projected (73%) - 234 missing MFs
 Avg interval = 180 secs
 Re = - 203.13 (201.56, -16.34, -19.22 GSE)

windlib 2.0b

LZ version = v01

WIND/WAVES Summary Plot (Page 1) for 08-AUG-2011, DOY = 220

DAILY 2011-08-09 20:02:05
 Re = 202.65 (201.31, -12.79, -19.42 GSE)



RAD2
 Antenna Ey
 Mode LIN(1)
 SUM/SEP SEP
 Toggle OFF

RAD1
 Antenna Ex
 Mode LIS(2,4)
 SUM/SEP SUM
 Toggle OFF

TNR
 Antenna ExEy
 Mode A-32
 Sweep ACE