

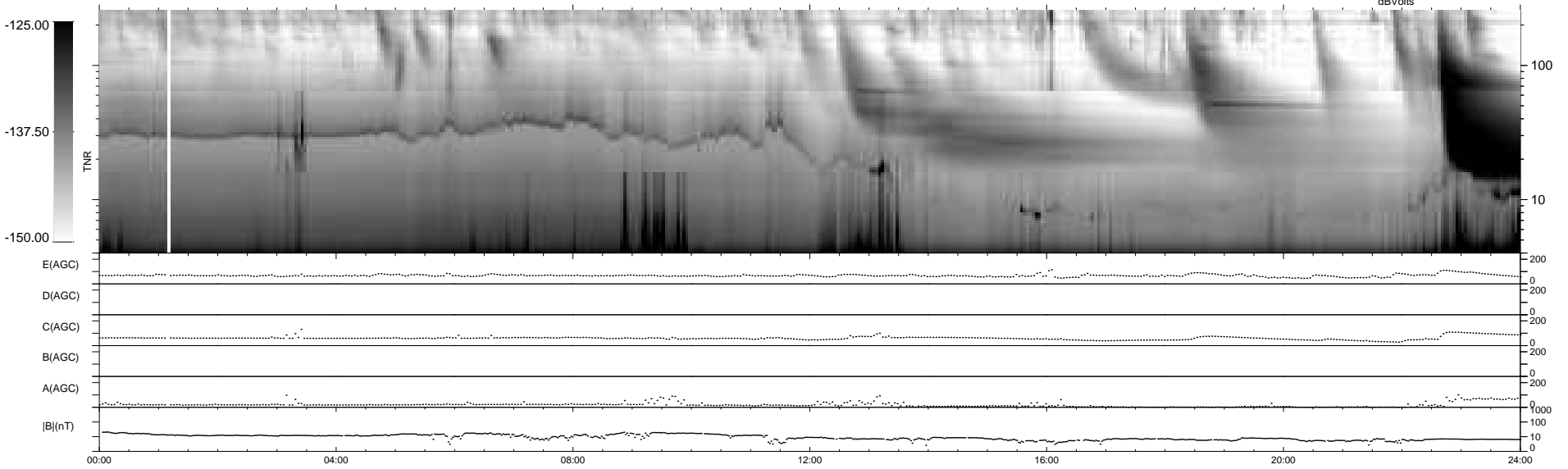
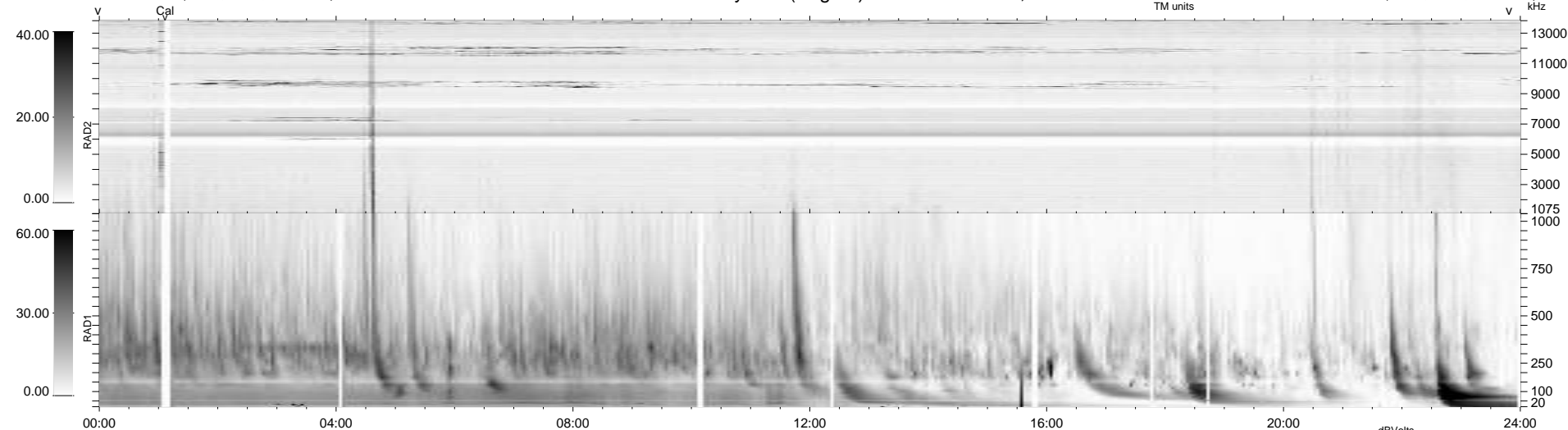
16 bad + 923 good MF/939MF projected (98%) - 0 missing MFs  
 Avg interval = 180 secs  
 Re = -204.34 (202.12, -23.50, -18.71 GSE)

windlib 2.0b

LZ version = v01

### WIND/WAVES Summary Plot (Page 1) for 06-AUG-2011, DOY = 218

DAILY 2011-08-26 00:05:08  
 Re = 203.70 (201.83, -19.94, -18.98 GSE)



RAD2  
 Antenna Ey .....  
 Mode LIN(1) .....  
 SUM/SEP SEP .....  
 Toggle OFF .....  
 RAD1  
 Antenna Ex .....  
 Mode LIS(2,4) .....  
 SUM/SEP SUM .....  
 Toggle OFF .....  
 TNR  
 Antenna ExEy .....  
 Mode A-32 .....  
 Sweep ACE .....