

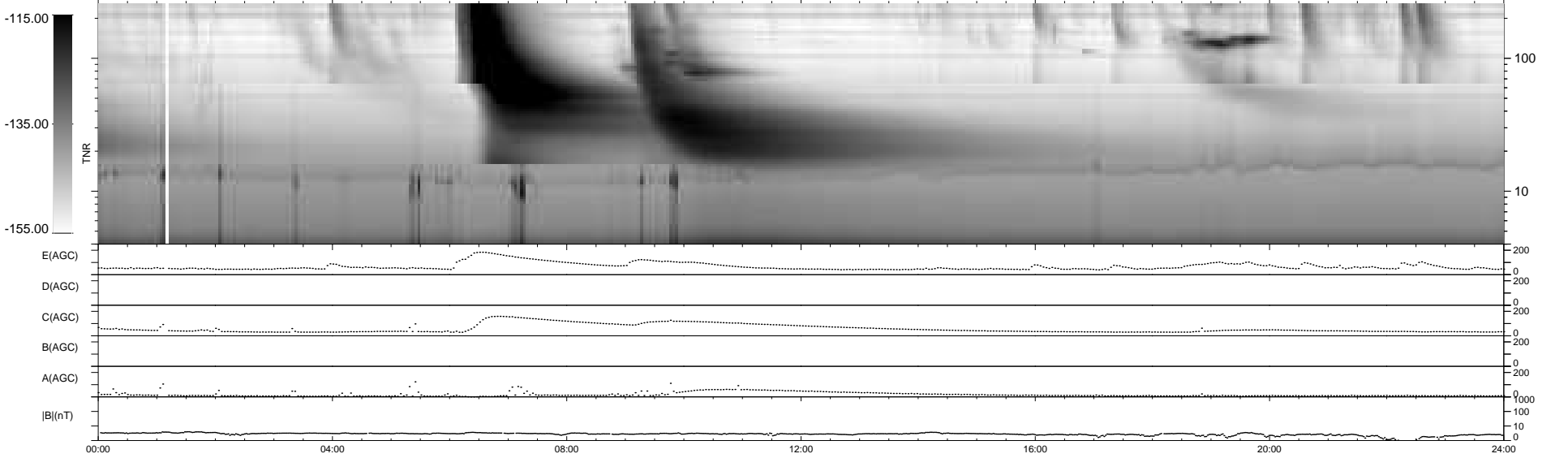
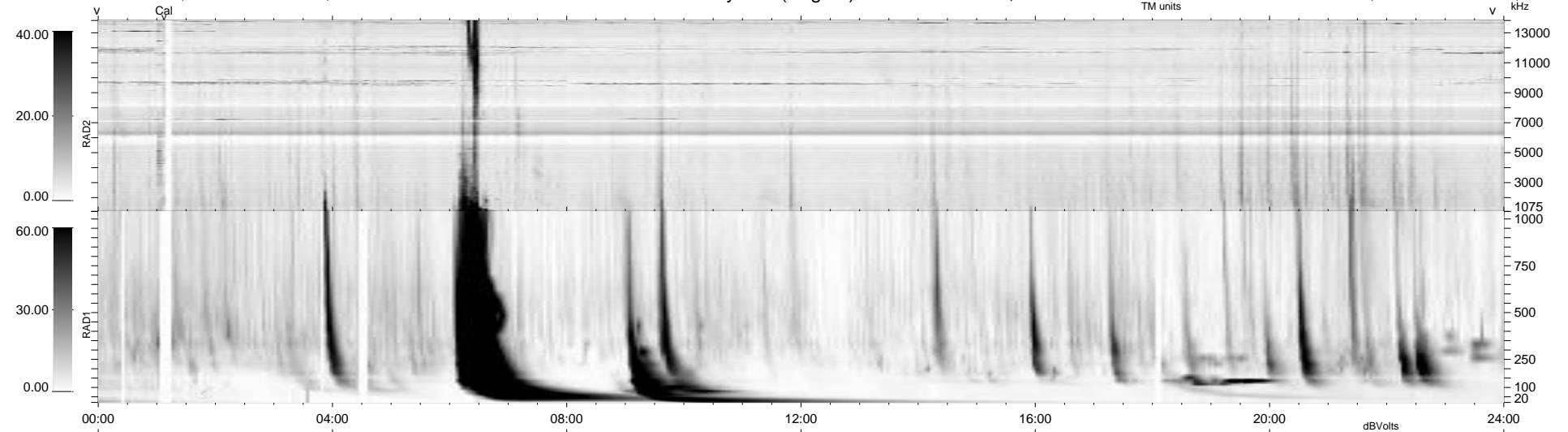
14 bad + 926 good MF/940MF projected (98%) - 0 missing MFs
 Avg interval = 180 secs
 Re = - 207.53 (203.34, -37.75, -17.29 GSE)

windlib 2.0b

LZ version = v01

WIND/WAVES Summary Plot (Page 1) for 02-AUG-2011, DOY = 214

DAILY 2011-08-24 20:27:46
 Re = 206.66 (203.03, -34.24, -17.69 GSE)



```

RAD2
Antenna Ey .....
Mode LIN(1) .....
SUM/SEP SEP .....
Toggle OFF .....

RAD1
Antenna Ex .....
Mode LIS(2,4) .....
SUM/SEP SUM .....
Toggle OFF .....

TNR
Antenna ExEy .....
Mode A-32 .....
Sweep ACE .....
  
```