

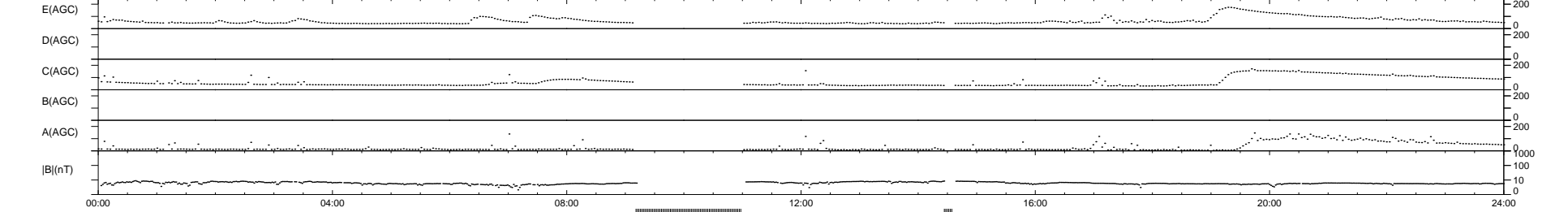
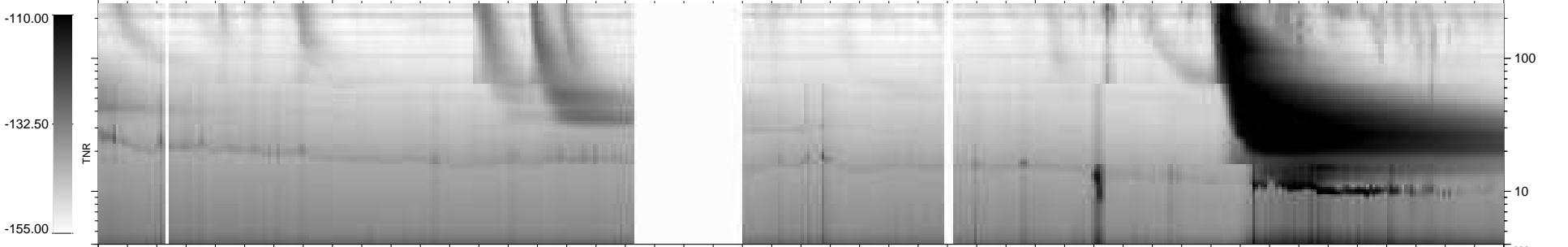
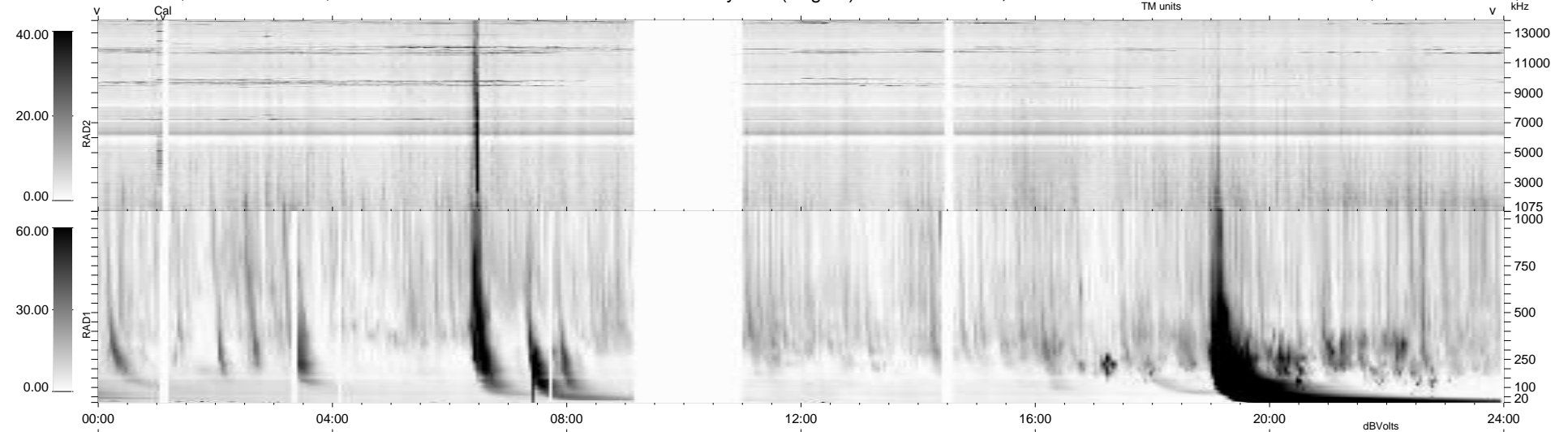
15 bad + 847 good MF/939MF projected (90%) - 77 missing MFs  
 Avg interval = 180 secs  
 Re = 209.39 (203.91, -44.68, -16.39 GSE)

windlib 2.0b

LZ version = v01

### WIND/WAVES Summary Plot (Page 1) for 31-JUL-2011, DOY = 212

DAILY 2011-08-24 20:25:56  
 Re = 208.45 (203.63, -41.27, -16.85 GSE)



RAD2  
 Antenna Ey  
 Mode LIN(1)  
 SUM/SEP SEP  
 Toggle OFF

RAD1  
 Antenna Ex  
 Mode LIS(2,4)  
 SUM/SEP SUM  
 Toggle OFF

TNR  
 Antenna ExEy  
 Mode A-32  
 Sweep ACE