

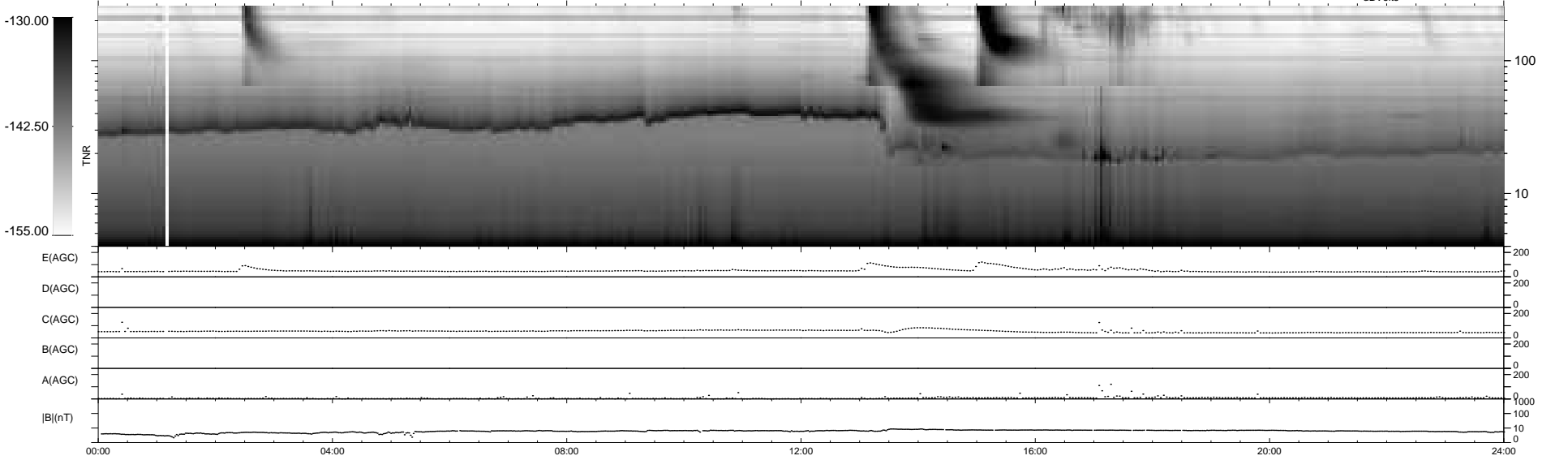
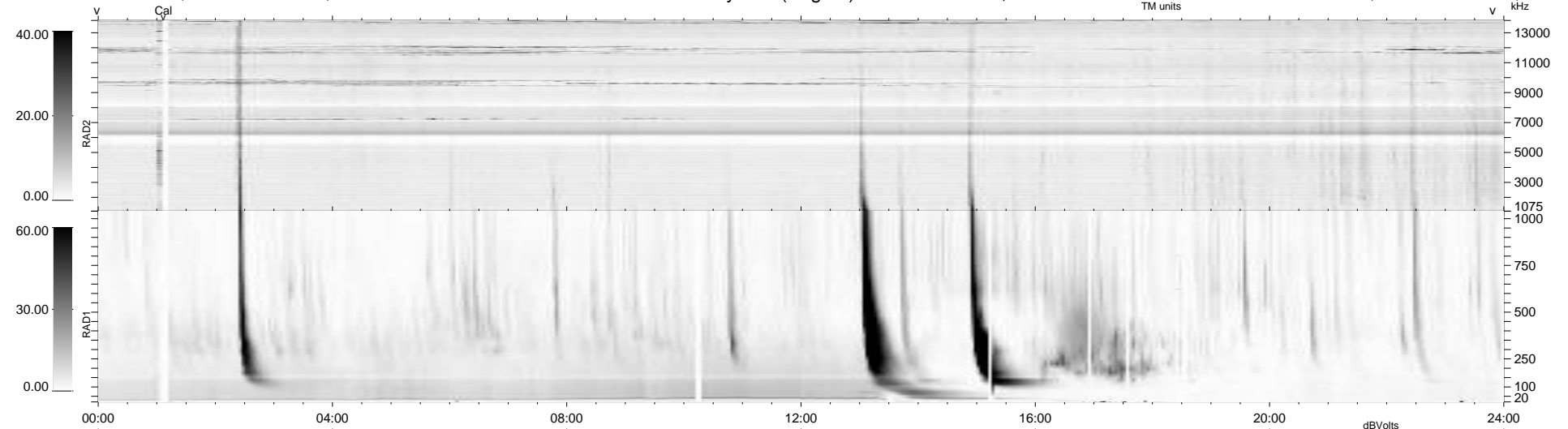
11 bad + 928 good MF/939MF projected (98%) - 0 missing MFs  
 Avg interval = 180 secs  
 Re = 211.34 (204.42, -51.36, -15.37 GSE)

windlib 2.0b

LZ version = v01

### WIND/WAVES Summary Plot (Page 1) for 29-JUL-2011, DOY = 210

DAILY 2011-08-24 20:24:03  
 Re = 210.36 (204.17, -48.08, -15.89 GSE)



E(AGC) ..... 0 200  
 D(AGC) ..... 0 200  
 C(AGC) ..... 0 200  
 B(AGC) ..... 0 200  
 A(AGC) ..... 0 200  
 |B|(nT) ..... 0 1000  
 0 10 0

```

RAD2
Antenna Ey .....
Mode LIN(1) .....
SUM/SEP SEP .....
Toggle OFF .....

RAD1
Antenna Ex .....
Mode LIS(2,4) .....
SUM/SEP SUM .....
Toggle OFF .....

TNR
Antenna ExEy .....
Mode A-32 .....
Sweep ACE .....
  
```