

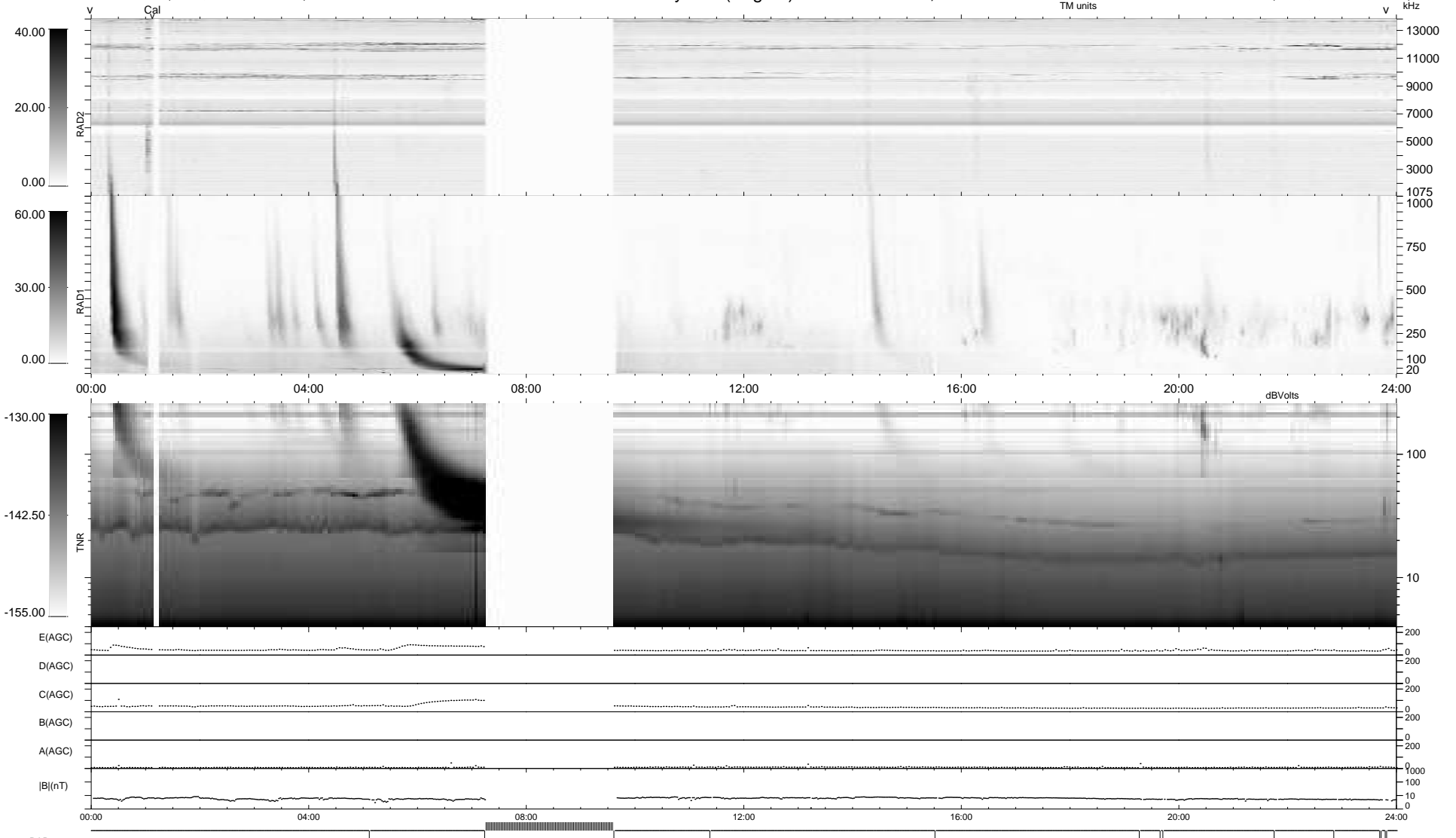
14 bad + 834 good MF/940MF projected (88%) - 92 missing MFs
 Avg interval = 180 secs
 Re = 215.42 (205.40, -63.61, -13.06 GSE)

windlib 2.0b

LZ version = v01

WIND/WAVES Summary Plot (Page 1) for 25-JUL-2011, DOY = 206

DAILY 2011-07-28 15:02:06
 Re = 214.39 (205.15, -60.73, -13.67 GSE)



RAD2
 Antenna Ey
 Mode LIN(1)
 SUM/SEP SEP
 Toggle OFF
 RAD1
 Antenna Ex
 Mode LIS(2,4)
 SUM/SEP SUM
 Toggle OFF
 TNR
 Antenna ExEy
 Mode A-32
 Sweep ACE