

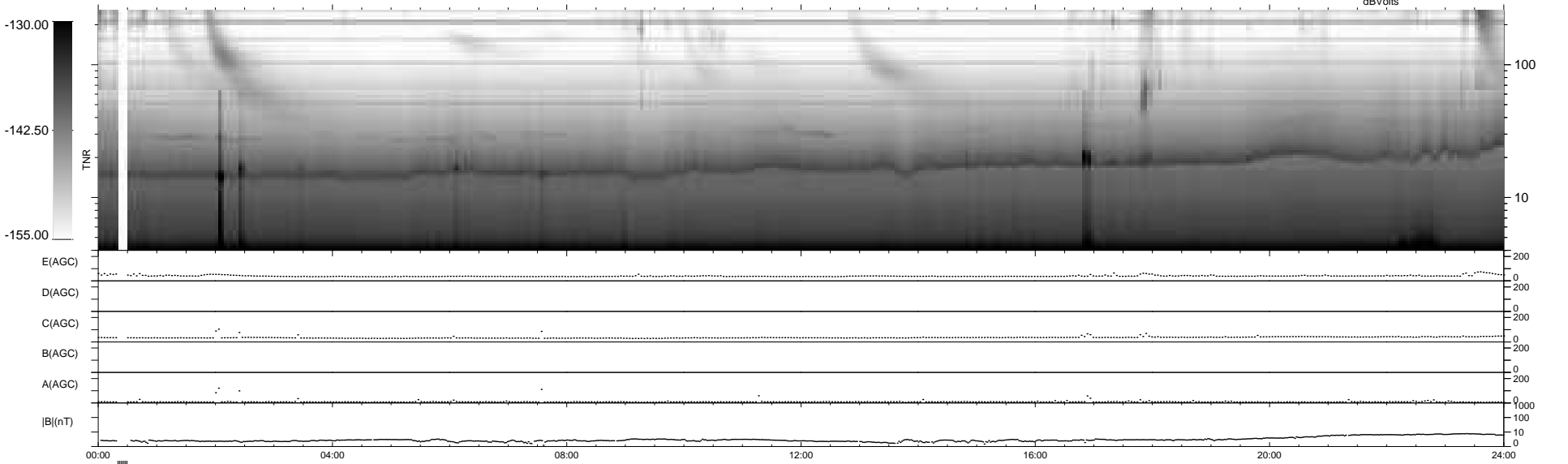
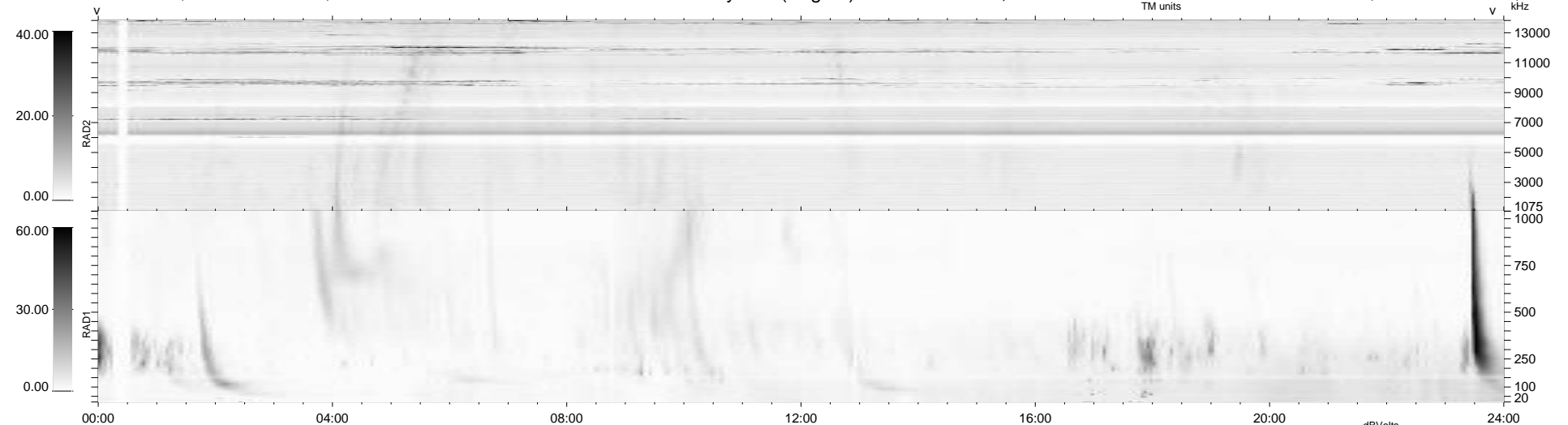
7 bad + 925 good MF/939MF projected (98%) - 7 missing MFs  
 Avg interval = 180 secs  
 Re = 216.48 (205.67, -66.40, -12.44 GSE)

windlib 2.0b

LZ version = v01

### WIND/WAVES Summary Plot (Page 1) for 24-JUL-2011, DOY = 205

DAILY 2011-08-24 20:19:14  
 Re = 215.43 (205.40, -63.63, -13.06 GSE)



RAD2  
 Antenna Ey .....  
 Mode LIN(1) .....  
 SUM/SEP SEP .....  
 Toggle OFF .....  
 RAD1  
 Antenna Ex .....  
 Mode LIS(2,4) .....  
 SUM/SEP SUM .....  
 Toggle OFF .....  
 TNR  
 Antenna ExEy .....  
 Mode A-32 .....  
 Sweep ACE .....