

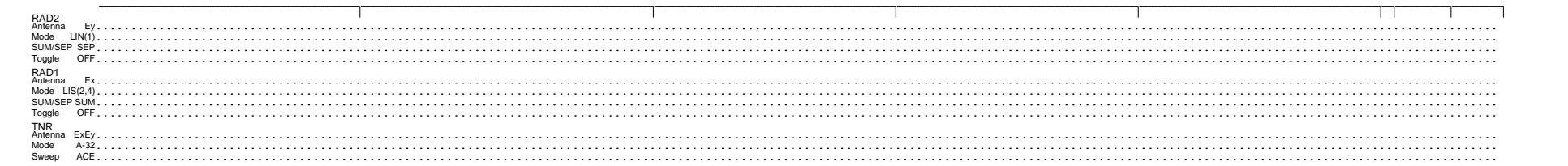
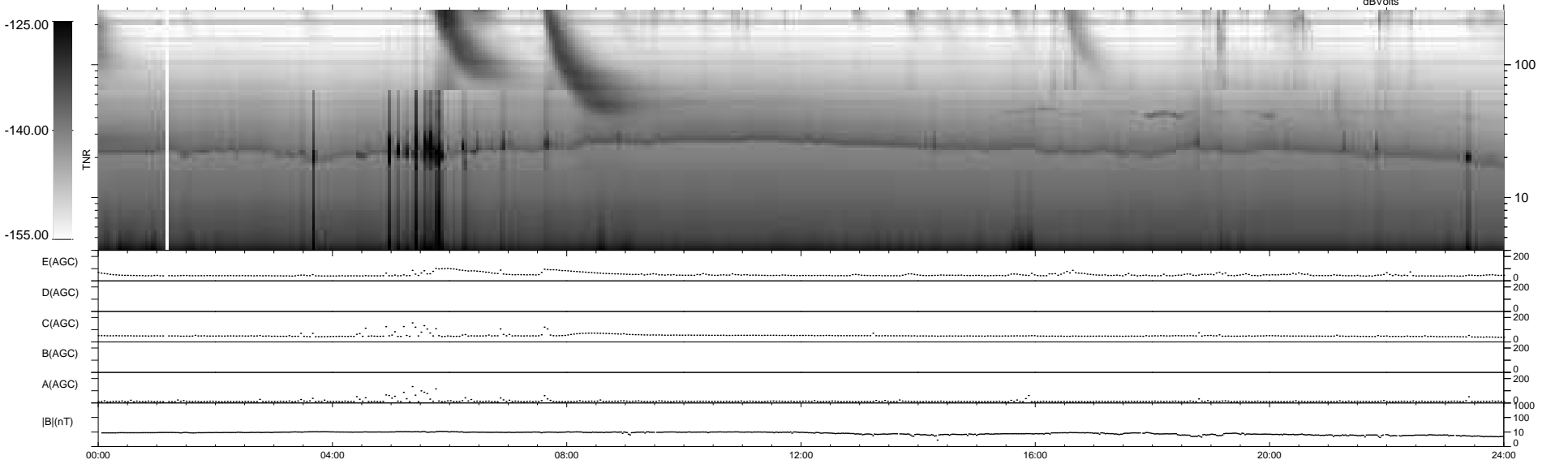
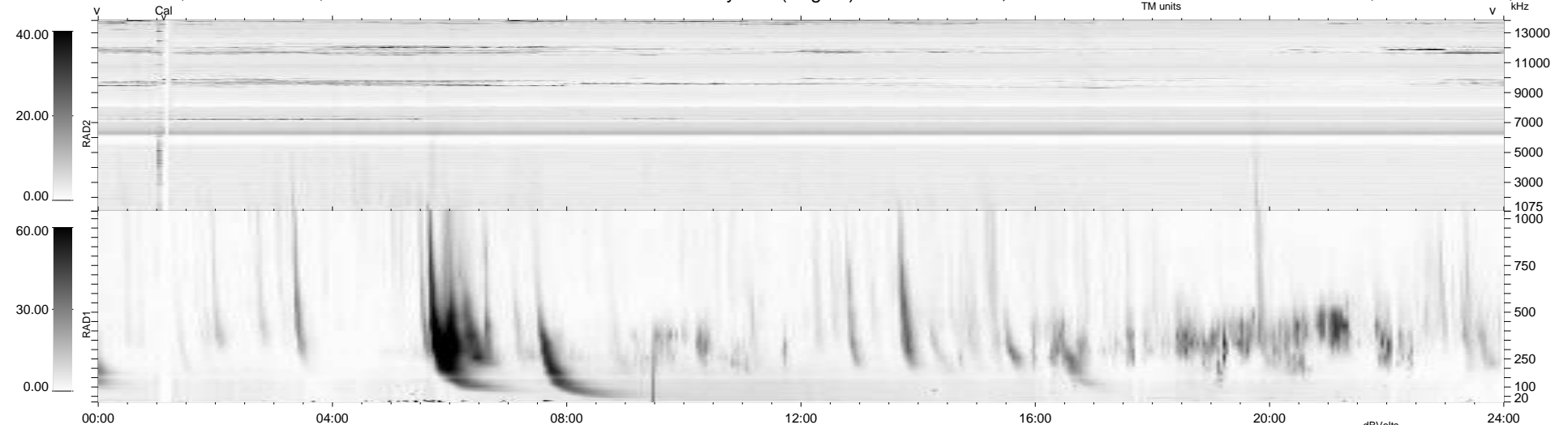
8 bad + 931 good MF/939MF projected (99%) - 0 missing MFs
 Avg interval = 180 secs
 Re = -222.05 (207.51, -78.51, -9.10 GSE)

windlib 2.0b

LZ version = v02

WIND/WAVES Summary Plot (Page 1) for 19-JUL-2011, DOY = 200

DAILY 2011-08-24 20:14:33
 Re = 220.91 (207.06, -76.35, -9.79 GSE)



```

RAD2
Antenna Ey .....
Mode LIN(1) .....
SUM/SEP SEP .....
Toggle OFF .....

RAD1
Antenna Ex .....
Mode LIS(2,4) .....
SUM/SEP SUM .....
Toggle OFF .....

TNR
Antenna ExEy .....
Mode A-32 .....
Sweep ACE .....
  
```