

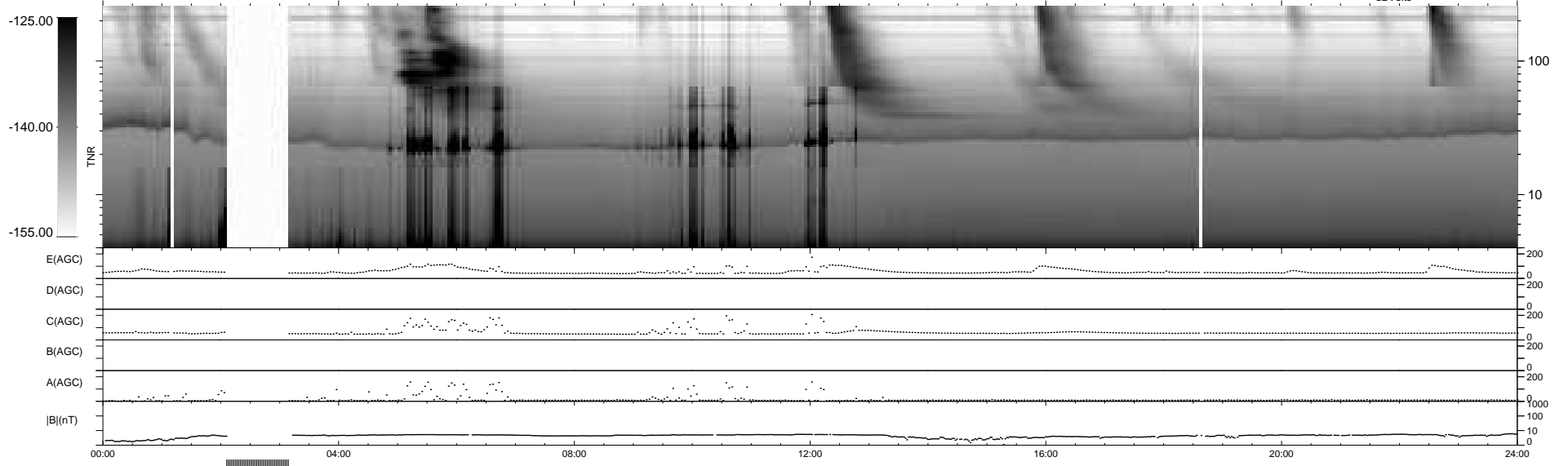
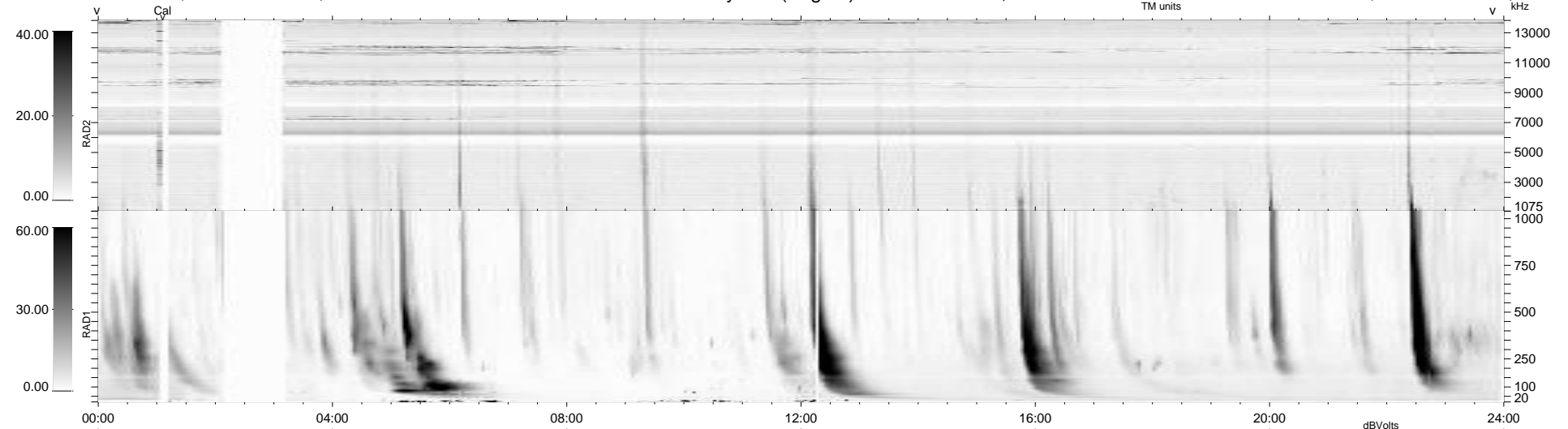
22 bad + 875 good MF/939MF projected (93%) - 42 missing MFs  
 Avg interval = 180 secs  
 Re = 224.42 (208.57, -82.49, -7.69 GSE)

windlib 2.0b

LZ version = v01

### WIND/WAVES Summary Plot (Page 1) for 17-JUL-2011, DOY = 198

DAILY 2011-07-18 18:02:05  
 Re = 223.23 (208.02, -80.57, -8.40 GSE)



RAD2  
 Antenna Ey .....  
 Mode LIN(1) .....  
 SUM/SEP SEP .....  
 Toggle OFF .....  
 RAD1  
 Antenna Ex .....  
 Mode LIS(2/4) .....  
 SUM/SEP SUM .....  
 Toggle OFF .....  
 TNR  
 Antenna ExEy .....  
 Mode A-32 .....  
 Sweep ACE .....