

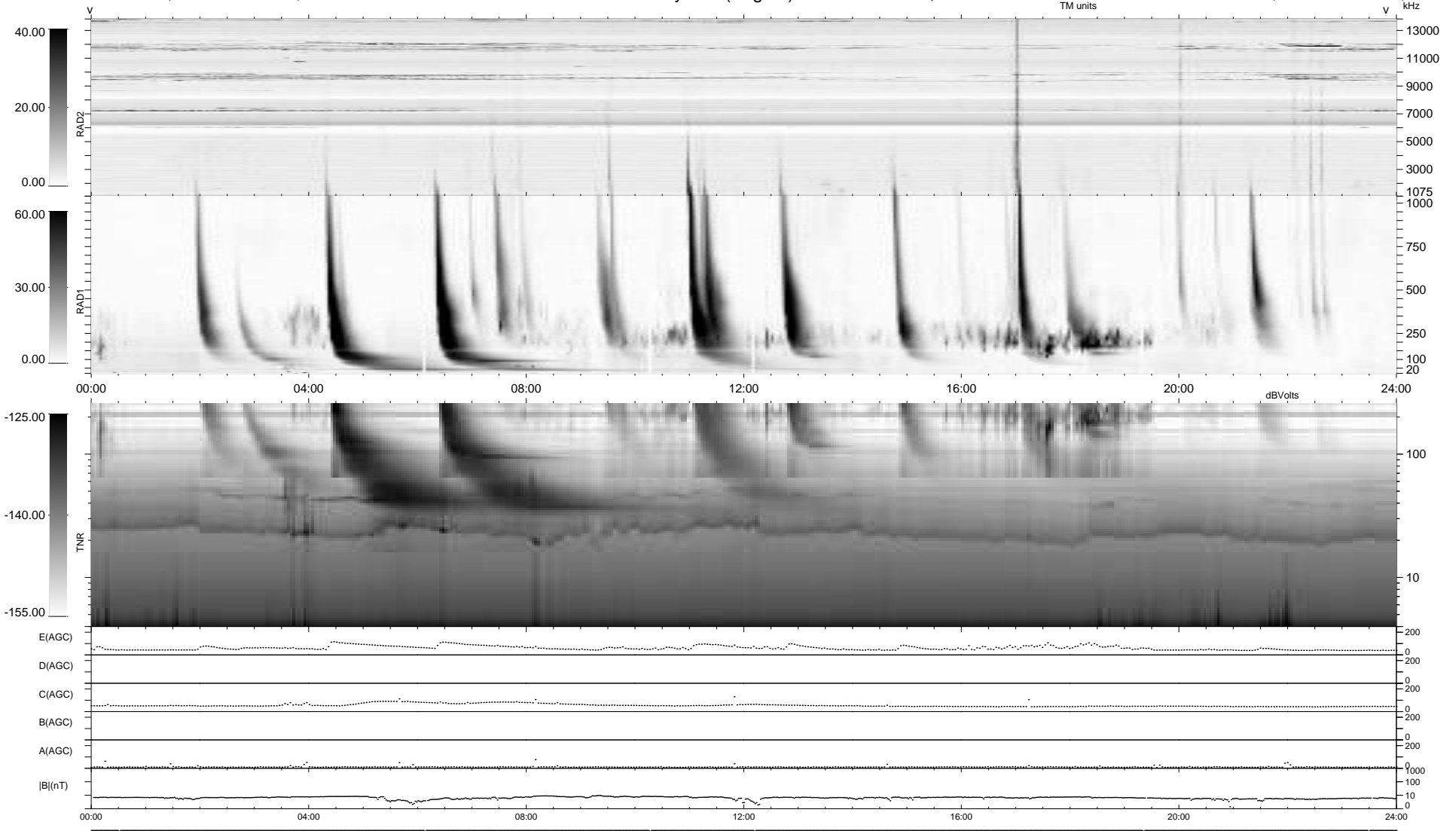
6 bad + 934 good MF/940MF projected (99%) - 0 missing MFs
 Avg interval = 180 secs
 Re = 233.53 (214.20, -93.00, -2.55 GSE)

windlib 2.0b

LZ version = v01

WIND/WAVES Summary Plot (Page 1) for 10-JUL-2011, DOY = 191

DAILY 2011-08-24 20:06:07
 Re = 232.17 (213.23, -91.79, -3.30 GSE)



RAD2
 Antenna Ey
 Mode LIN(1)
 SUM/SEP SEP
 Toggle OFF
 RAD1
 Antenna Ex
 Mode LIS(2,4)
 SUM/SEP SUM
 Toggle OFF
 TNR
 Antenna ExEy
 Mode A-32
 Sweep ACE