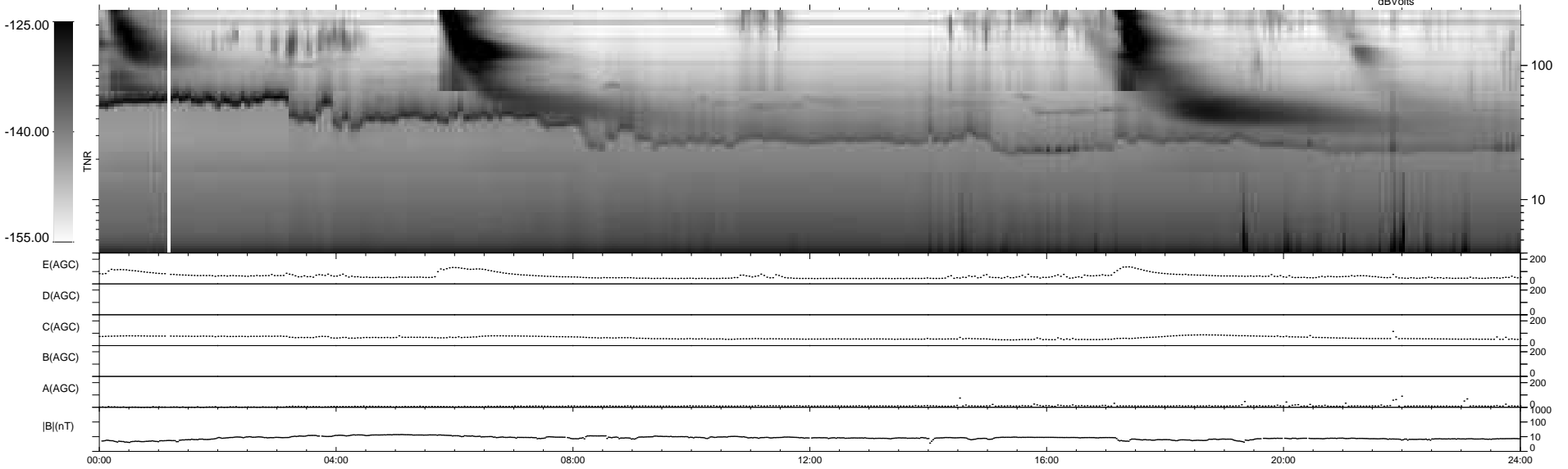
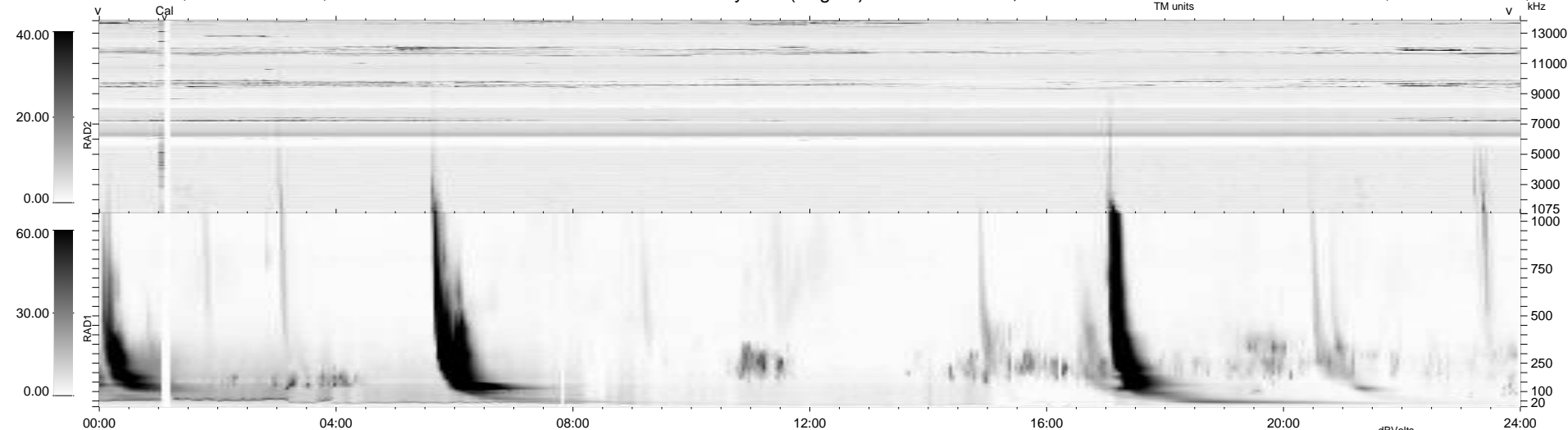


7 bad + 932 good MF/939MF projected (99%) - 0 missing MFs  
 Avg interval = 180 secs  
 Re = 234.91 (215.21, -94.14, -1.79 GSE)

windlib 2.0b LZ version = v01  
 DAILY 2011-08-24 20:05:10  
 Re = 233.54 (214.20, -93.01, -2.55 GSE)

### WIND/WAVES Summary Plot (Page 1) for 09-JUL-2011, DOY = 190



RAD2  
 Antenna Ey .....  
 Mode LIN(1) .....  
 SUM/SEP SEP .....  
 Toggle OFF .....  
 RAD1  
 Antenna Ex .....  
 Mode LIS(2,4) .....  
 SUM/SEP SUM .....  
 Toggle OFF .....  
 TNR  
 Antenna ExEy .....  
 Mode A-32 .....  
 Sweep ACE .....