

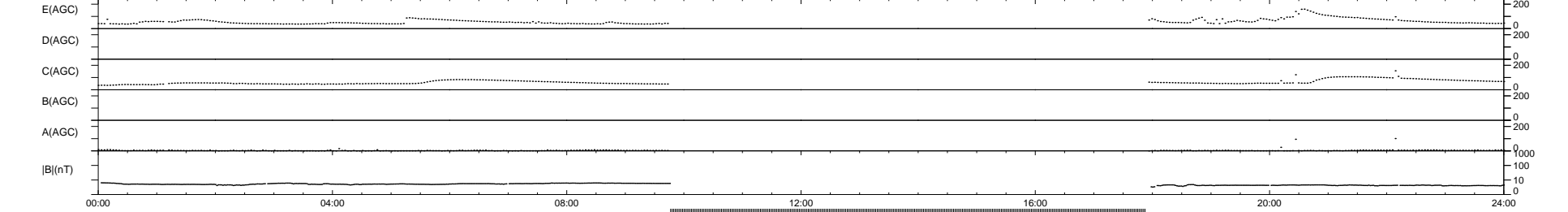
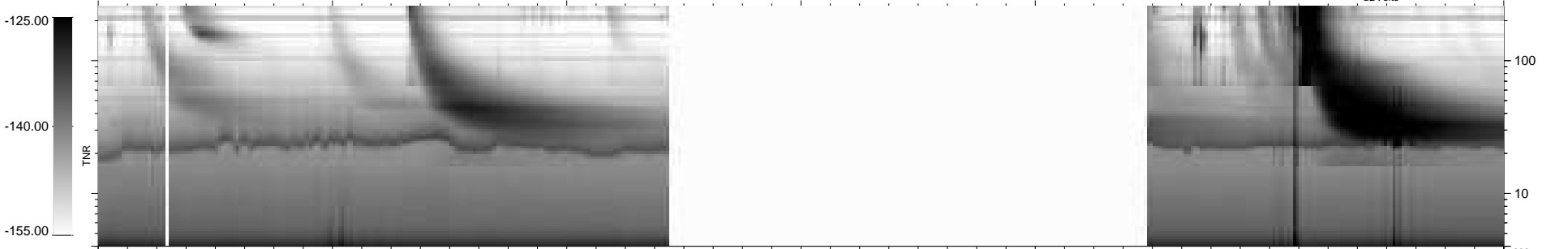
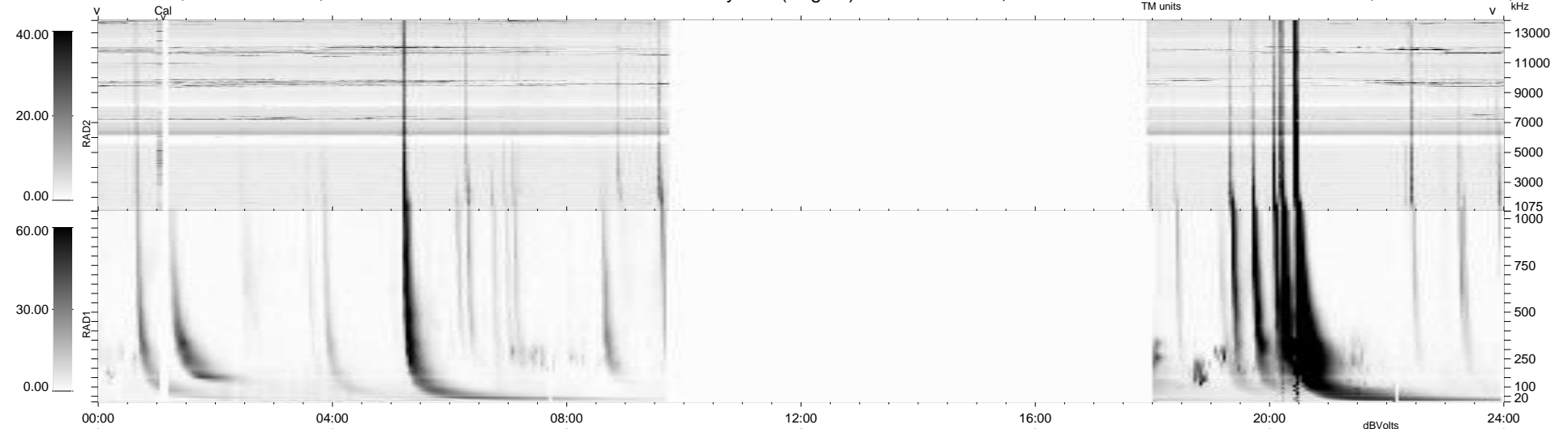
11 bad + 610 good MF/939MF projected (64%) - 318 missing MFs
 Avg interval = 180 secs
 Re = -237.67 (217.34, -96.19, -0.26 GSE)

windlib 2.0b

LZ version = v01

WIND/WAVES Summary Plot (Page 1) for 07-JUL-2011, DOY = 188

DAILY 2011-07-08 16:02:07
 Re = 236.30 (216.27, -95.21, -1.02 GSE)



RAD2
 Antenna Ey
 Mode LIN(1)
 SUM/SEP SEP
 Toggle OFF
 RAD1
 Antenna Ex
 Mode LIS(2,4)
 SUM/SEP SUM
 Toggle OFF
 TNR
 Antenna ExEy
 Mode A-32
 Sweep ACE