

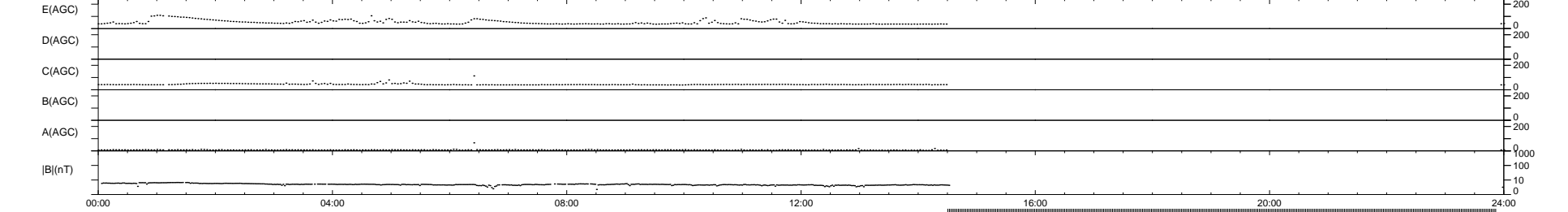
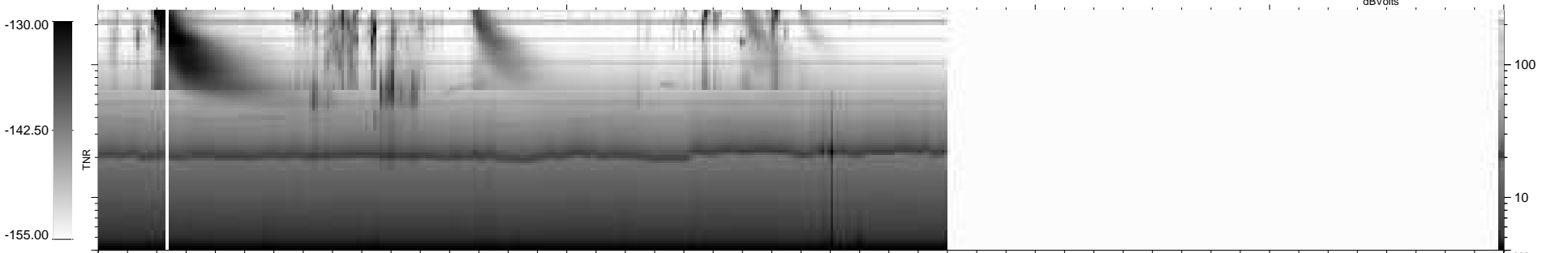
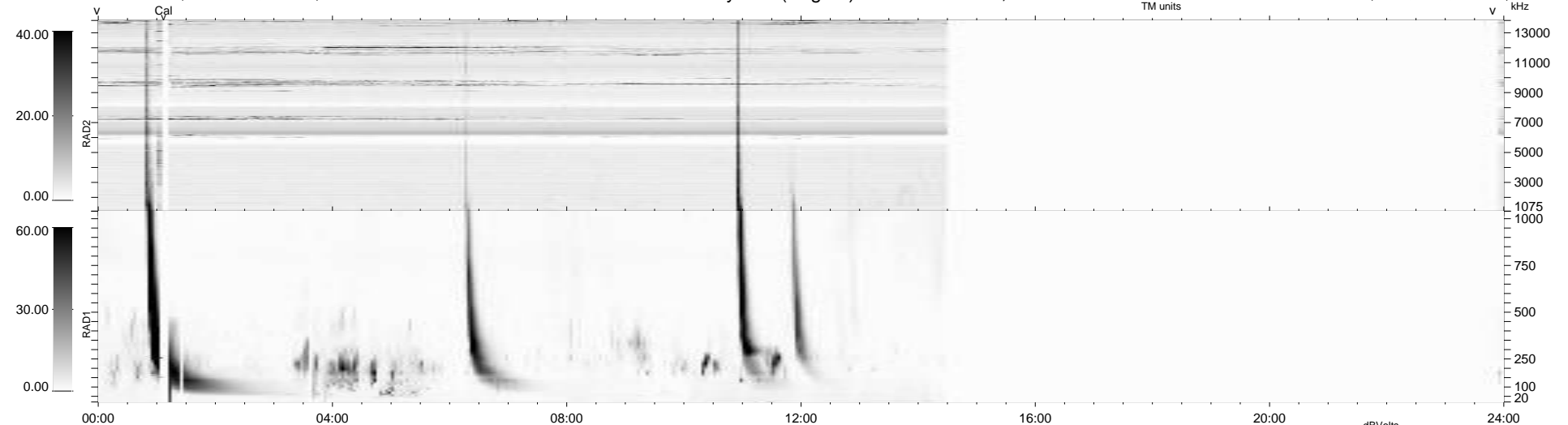
13 bad + 559 good MF/939MF projected (59%) - 367 missing MFs
 Avg interval = 180 secs
 Re = -240.37 (219.53, -97.90, 1.29 GSE)

windlib 2.0b

LZ version = v01

WIND/WAVES Summary Plot (Page 1) for 05-JUL-2011, DOY = 186

DAILY 2011-07-07 01:02:07
 Re = 239.04 (218.44, -97.09, 0.52 GSE)



```

RAD2
Antenna Ey .....
Mode LIN(1) .....
SUM/SEP SEP .....
Toggle OFF .....

RAD1
Antenna Ex .....
Mode LIS(2,4) .....
SUM/SEP SUM .....
Toggle OFF .....

TNR
Antenna ExEy .....
Mode A-32 .....
Sweep ACE .....
  
```