

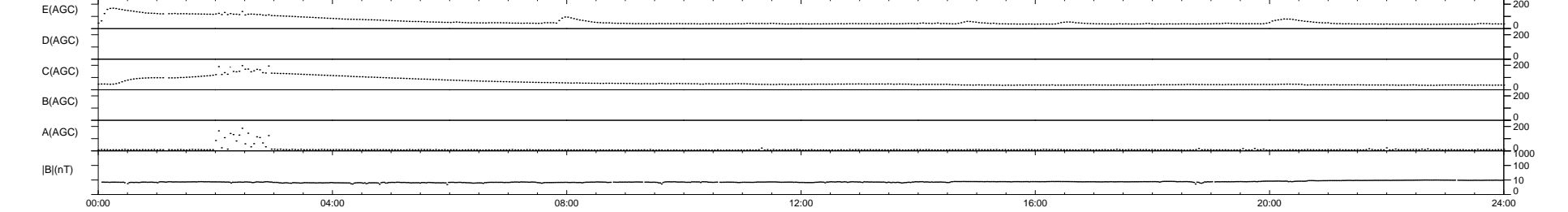
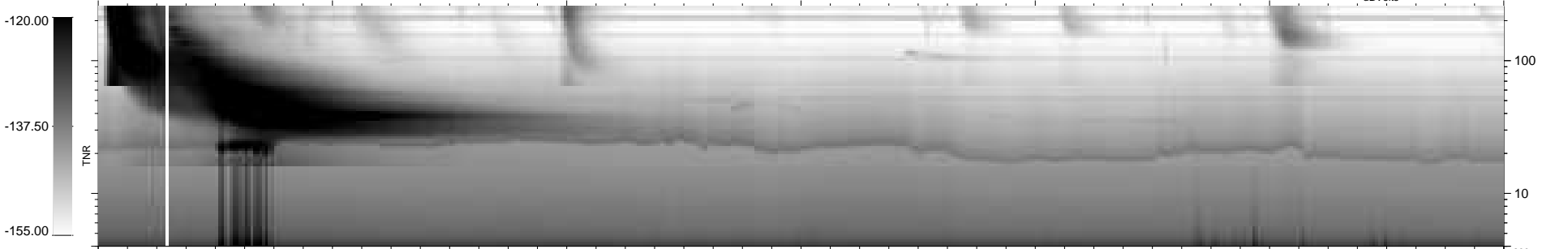
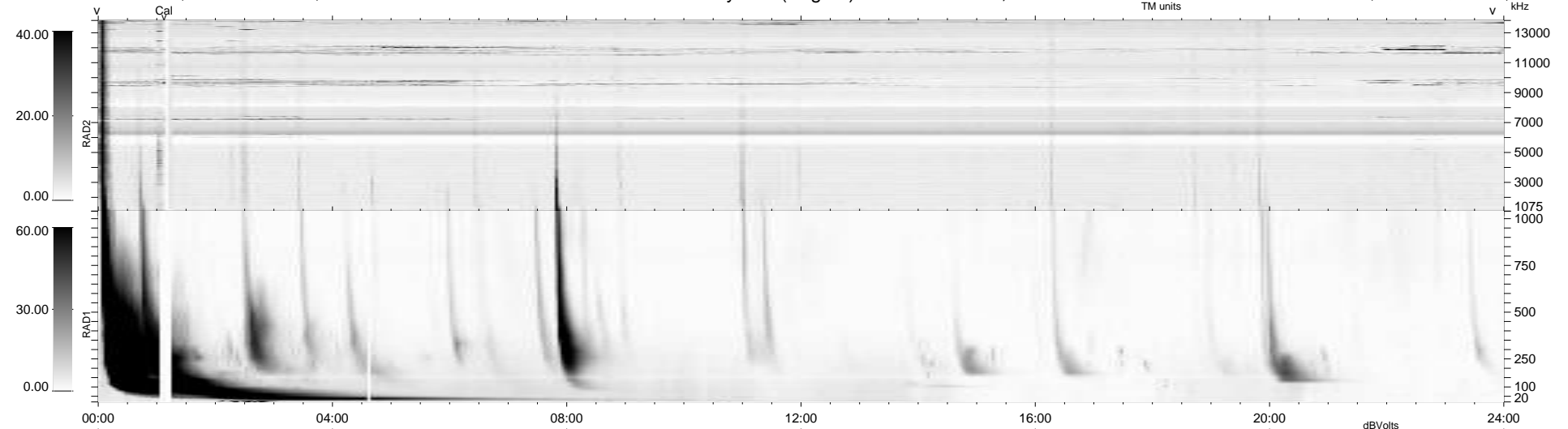
10 bad + 929 good MF/939MF projected (98%) - 0 missing MFs
 Avg interval = 180 secs
 Re = 242.94 (221.72, -99.26, 2.84 GSE)

windlib 2.0b

LZ version = v01

WIND/WAVES Summary Plot (Page 1) for 03-JUL-2011, DOY = 184

DAILY 2011-07-05 18:04:02
 Re = 241.69 (220.63, -98.63, 2.07 GSE)



RAD2
 Antenna Ey
 Mode LIN(1)
 SUM/SEP SEP
 Toggle OFF
 RAD1
 Antenna Ex
 Mode LIS(2,4)
 SUM/SEP SUM
 Toggle OFF
 TNR
 Antenna ExEy
 Mode A-32
 Sweep ACE