

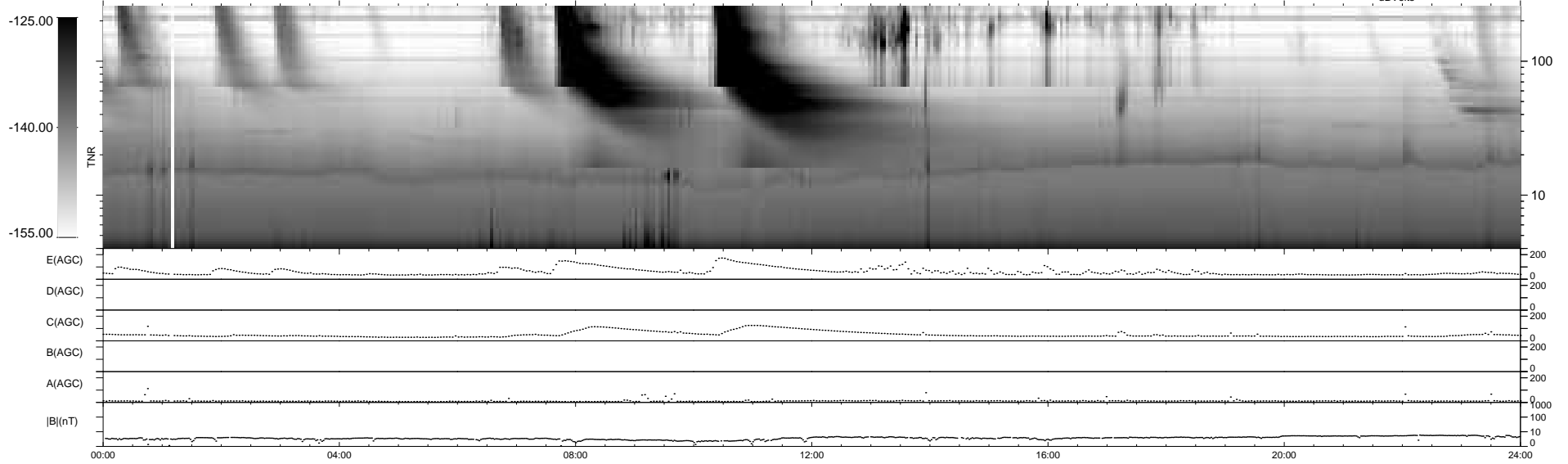
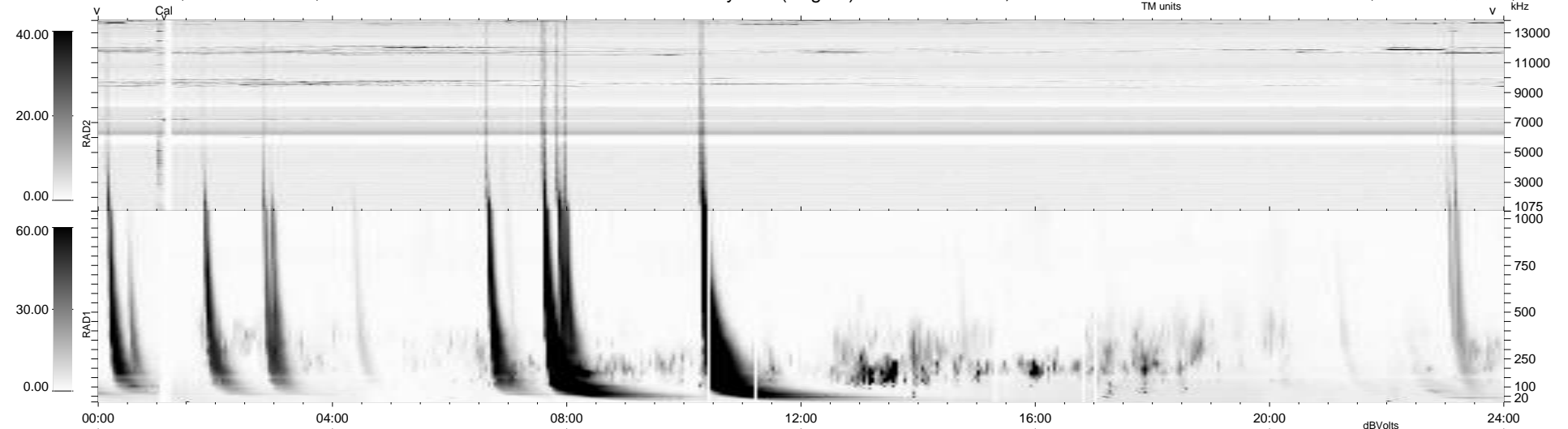
15 bad + 925 good MF/940MF projected (98%) - 0 missing MFs  
 Avg interval = 180 secs  
 Re = 250.96 (230.02, -99.96, 8.90 GSE)

windlib 2.0b

LZ version = v01

### WIND/WAVES Summary Plot (Page 1) for 25-JUN-2011, DOY = 176

DAILY 2011-06-27 01:16:05  
 Re = 250.17 (229.02, -100.34, 8.18 GSE)



RAD2  
 Antenna Ey .....  
 Mode LIN(1) .....  
 SUM/SEP SEP .....  
 Toggle OFF .....  
 RAD1  
 Antenna Ex .....  
 Mode LIS(2,4) .....  
 SUM/SEP SUM .....  
 Toggle OFF .....  
 TNR  
 Antenna ExEy .....  
 Mode A-32 .....  
 Sweep ACE .....