

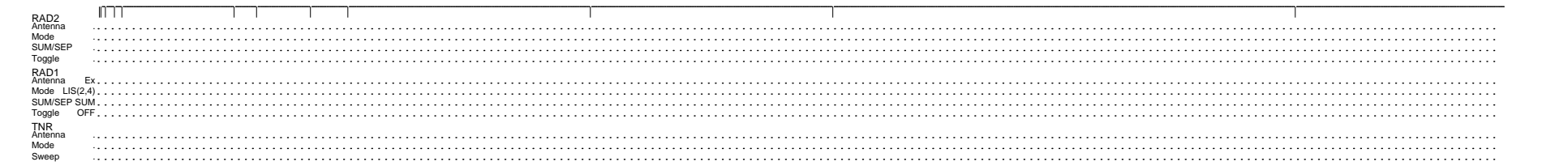
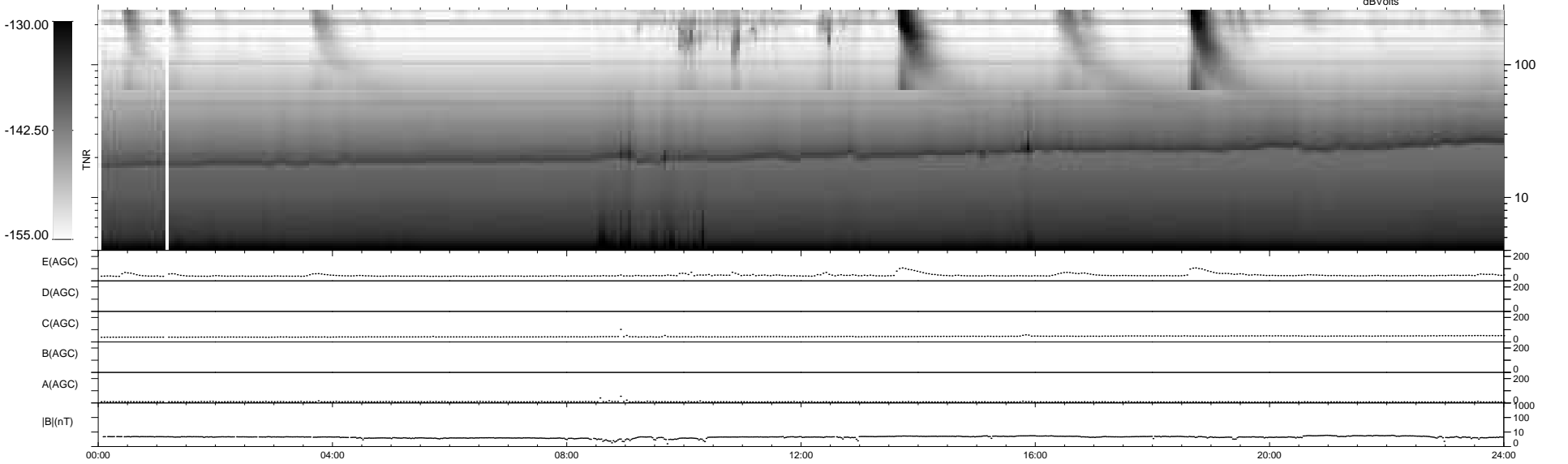
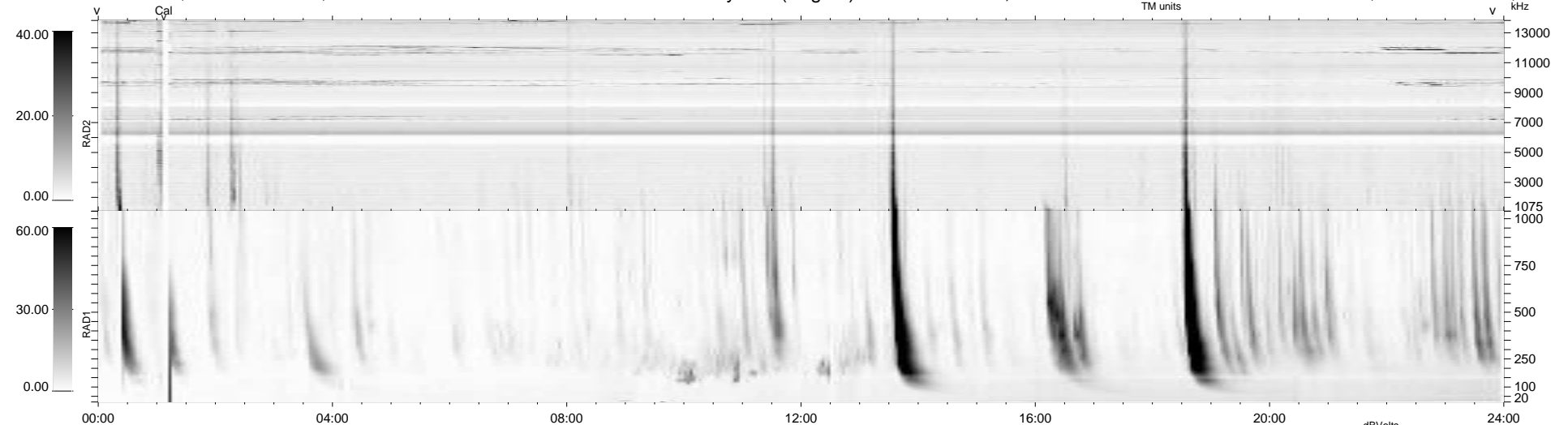
12 bad + 927 good MF/939MF projected (98%) - 0 missing MFs
Avg interval = 180 secs
Re = 254.82 (236.20, -94.73, 12.99 GSE)

windlib 2.0b

LZ version = v01

WIND/WAVES Summary Plot (Page 1) for 19-JUN-2011, DOY = 170

DAILY 2011-06-21 19:33:08
Re = 254.26 (235.14, -95.94, 12.35 GSE)



RAD2
Antenna
Mode
SUM/SEP
Toggle
RAD1
Antenna Ex
Mode LIS(2/4)
SUM/SEP SUM
Toggle OFF
TNR
Antenna
Mode
Sweep