

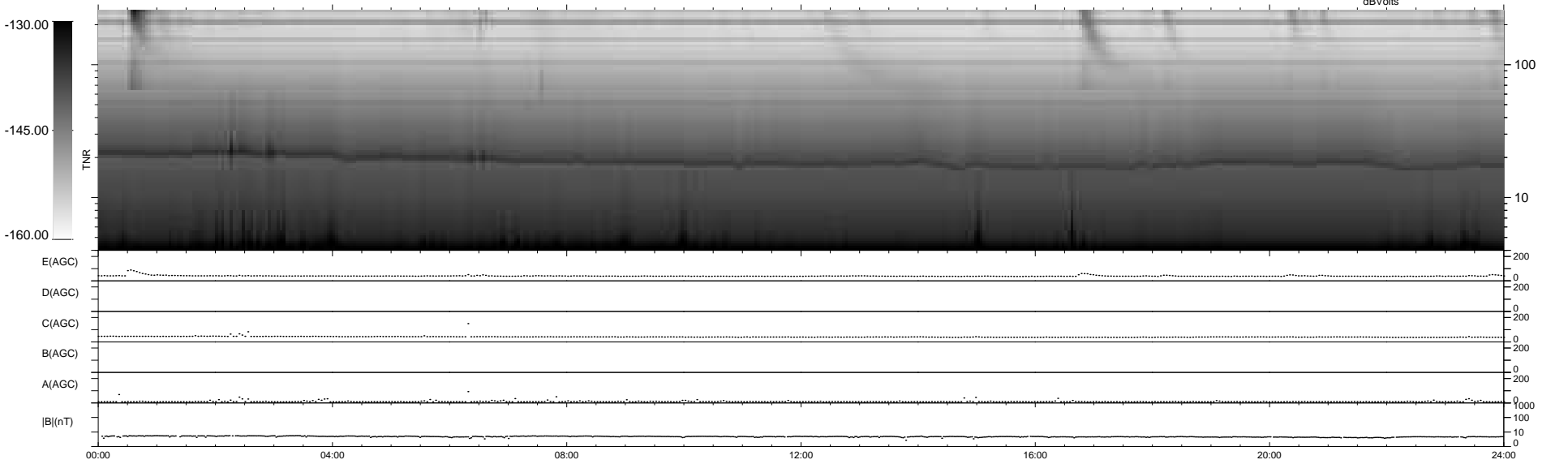
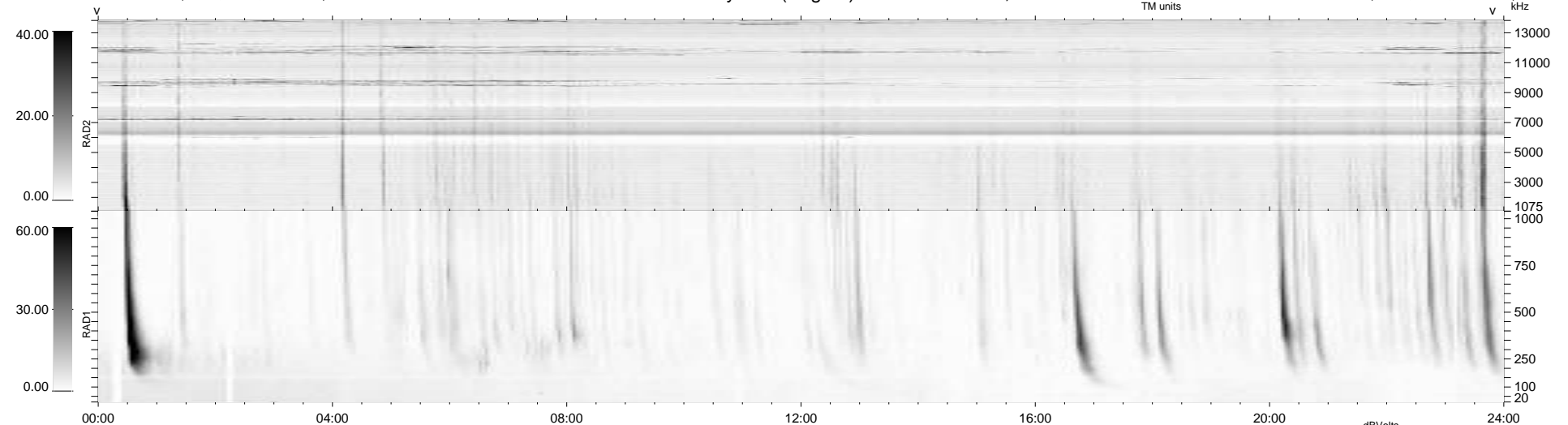
13 bad + 926 good MF/939MF projected (98%) - 0 missing MFs
 Avg interval = 180 secs
 Re = 255.36 (237.28, -93.39, 13.62 GSE)

windlib 2.0b

LZ version = v01

WIND/WAVES Summary Plot (Page 1) for 18-JUN-2011, DOY = 169

DAILY 2011-06-21 19:32:12
 Re = 254.82 (236.20, -94.72, 13.00 GSE)



RAD2
 Antenna Ey
 Mode LIN(1)
 SUM/SEP SEP
 Toggle OFF

RAD1
 Antenna Ex
 Mode LIS(2,4)
 SUM/SEP SUM
 Toggle OFF

TNR
 Antenna ExEy
 Mode A-32
 Sweep ACE