

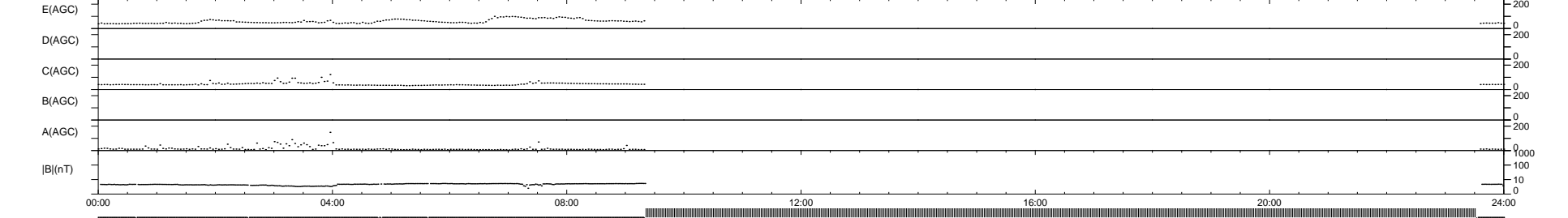
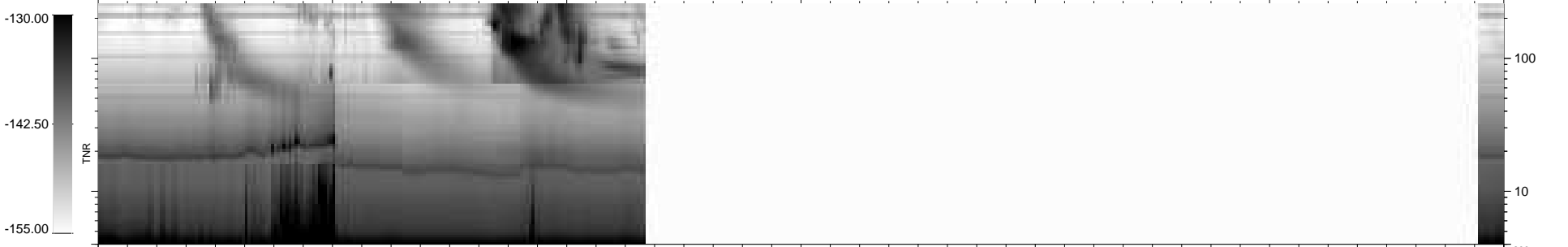
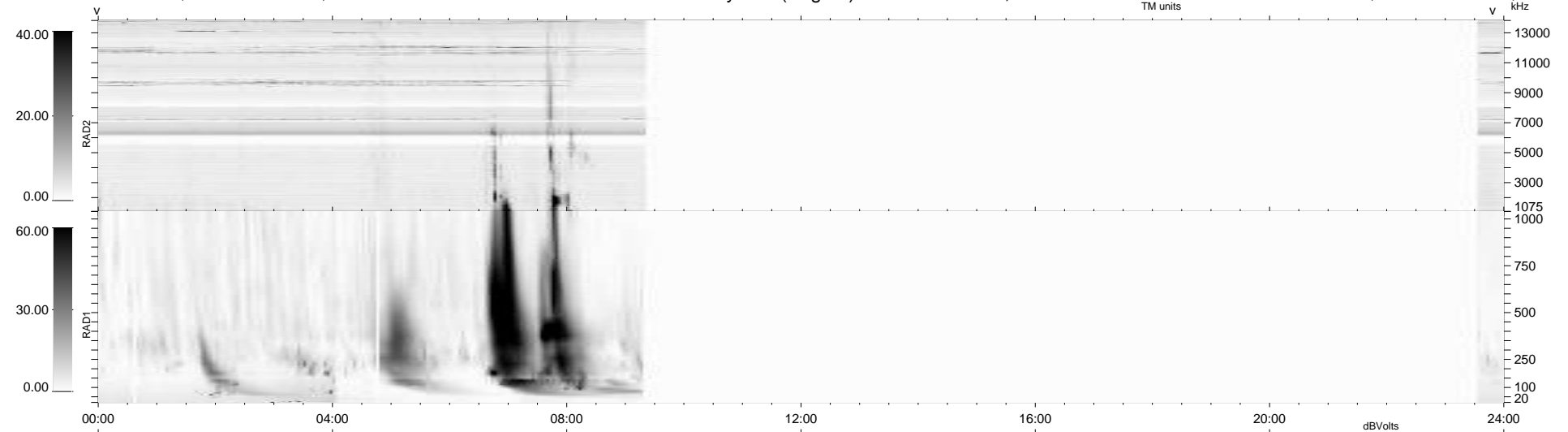
7 bad + 378 good MF/940MF projected (40%) - 555 missing MFs  
 Avg interval = 180 secs  
 Re = -263.36 (255.34, -60.71, 21.74 GSE)

windlib 2.0b

LZ version = v01

### WIND/WAVES Summary Plot (Page 1) for 02-JUN-2011, DOY = 153

DAILY 2011-06-04 03:16:06  
 Re = 263.06 (254.46, -63.19, 21.36 GSE)



```

RAD2
Antenna Ey .....
Mode LIN(1) .....
SUM/SEP SEP .....
Toggle OFF .....

RAD1
Antenna Ex .....
Mode LIS(2,4) .....
SUM/SEP SUM .....
Toggle OFF .....

TNR
Antenna ExEy .....
Mode A-32 .....
Sweep ACE .....
  
```