

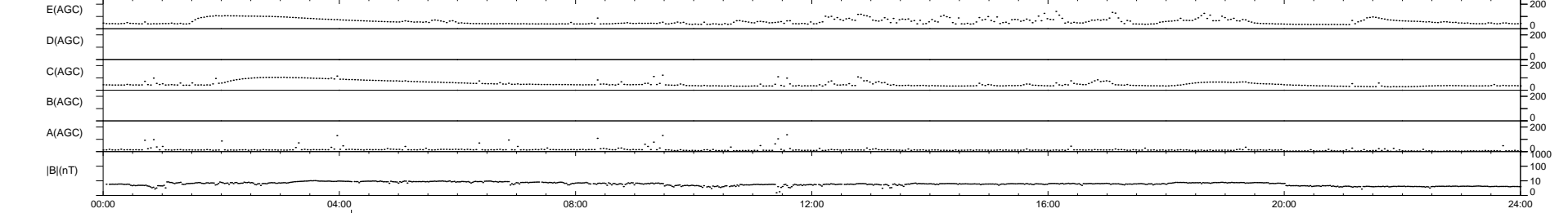
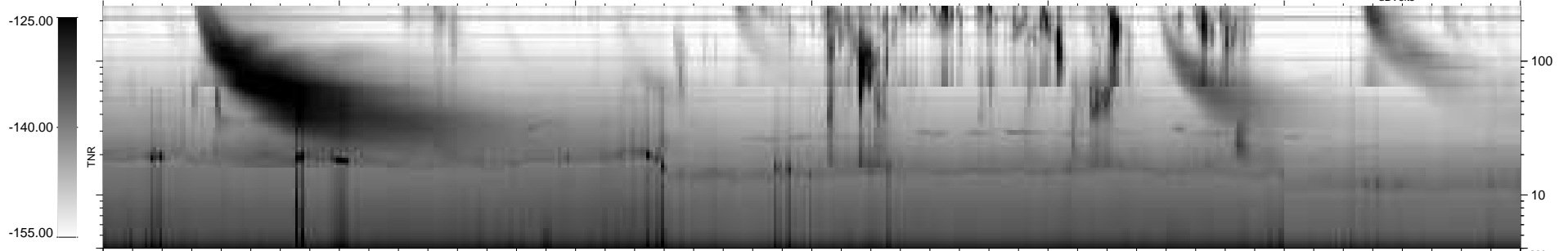
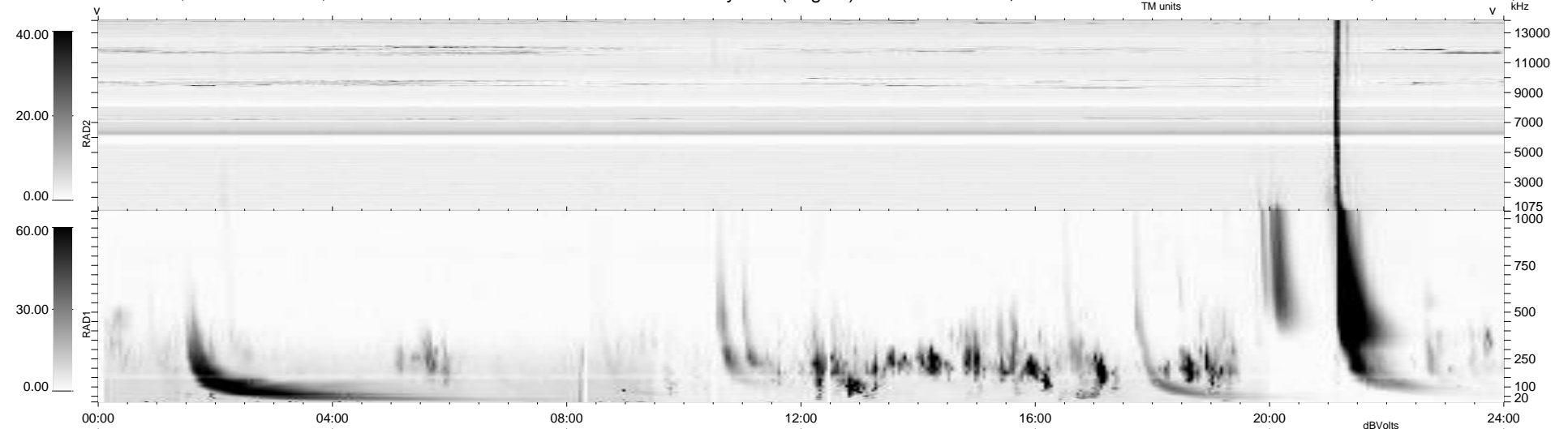
11 bad + 927 good MF/939MF projected (98%) - 1 missing MF  
 Avg interval = 180 secs  
 Re = -264.02 (258.21, -49.99, 23.07 GSE)

windlib 2.0b

LZ version = v01

WIND/WAVES Summary Plot (Page 1) for 29-MAY-2011, DOY = 149

DAILY 2011-05-30 03:16:07  
 Re = 263.93 (257.60, -52.76, 22.77 GSE)



RAD2  
 Antenna Ey  
 Mode LIN(1)  
 SUM/SEP SEP  
 Toggle OFF

RAD1  
 Antenna  
 Mode  
 SUM/SEP  
 Toggle

TNR  
 Antenna ExEy  
 Mode A-32  
 Sweep ACE