

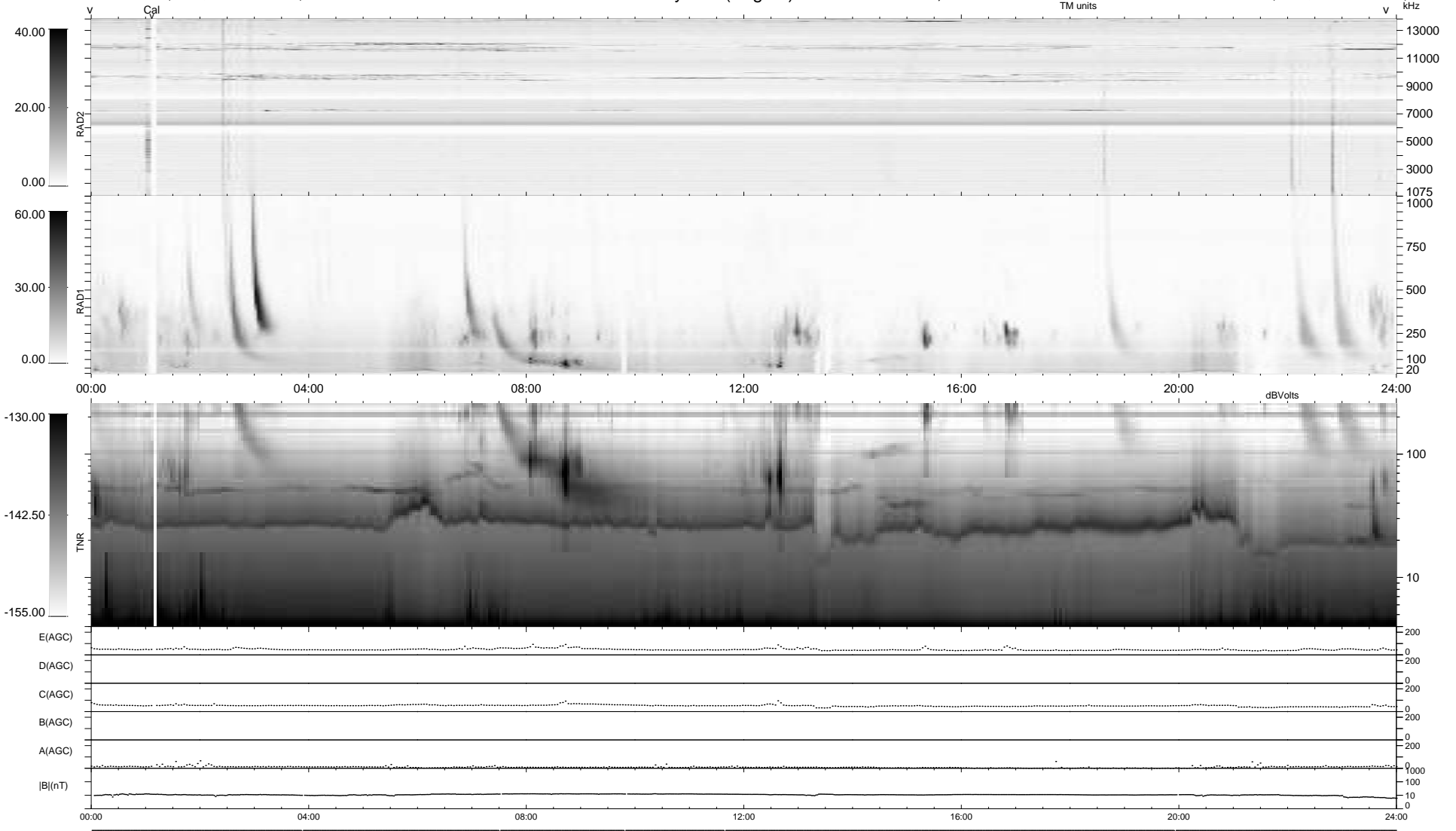
5 bad + 934 good MF/939MF projected (99%) - 0 missing MFs
 Avg interval = 180 secs
 Re = -264.06 (258.77, -47.12, 23.34 GSE)

windlib 2.0b

LZ version = v01

WIND/WAVES Summary Plot (Page 1) for 28-MAY-2011, DOY = 148

DAILY 2011-05-29 20:16:06
 Re = 264.02 (258.22, -49.97, 23.07 GSE)



RAD2 Antenna Ey
 Mode LIN(1)
 SUM/SEP SEP
 Toggle OFF
 RAD1 Antenna Ex
 Mode LIS(2,4)
 SUM/SEP SUM
 Toggle OFF
 TNR Antenna ExEy
 Mode A-32
 Sweep ACE