

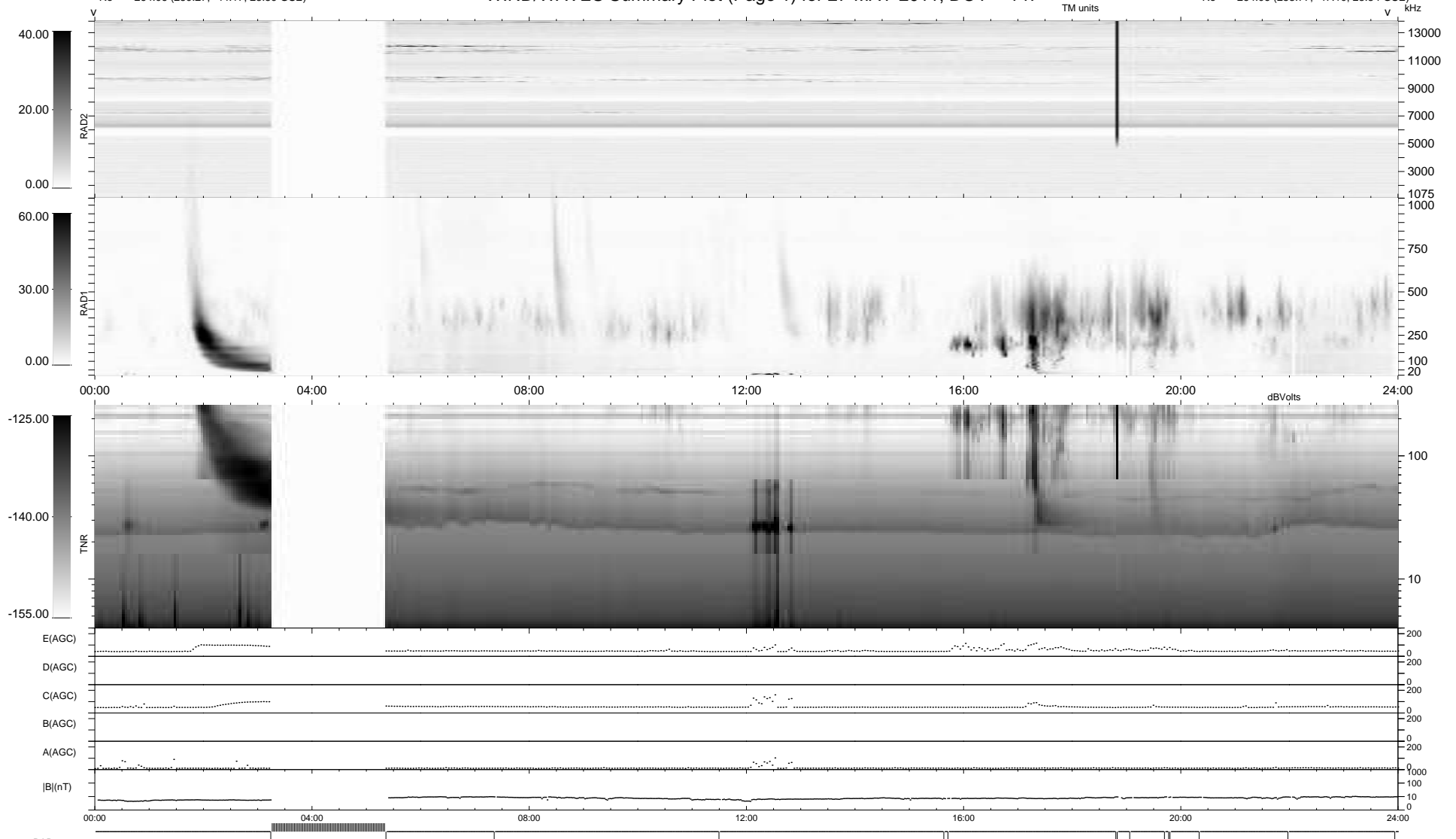
15 bad + 842 good MF/939MF projected (89%) - 82 missing MFs
 Avg interval = 180 secs
 Re = -264.06 (259.27, -44.17, 23.59 GSE)

windlib 2.0b

LZ version = v01

WIND/WAVES Summary Plot (Page 1) for 27-MAY-2011, DOY = 147

DAILY 2011-05-28 06:16:05
 Re = 264.06 (258.77, -47.10, 23.34 GSE)



```

RAD2
Antenna Ey .....
Mode LIN(1) .....
SUM/SEP SEP .....
Toggle OFF .....

RAD1
Antenna Ex .....
Mode LIS(2,4) .....
SUM/SEP SUM .....
Toggle OFF .....

TNR
Antenna ExEy .....
Mode A-32 .....
Sweep ACE .....
  
```