

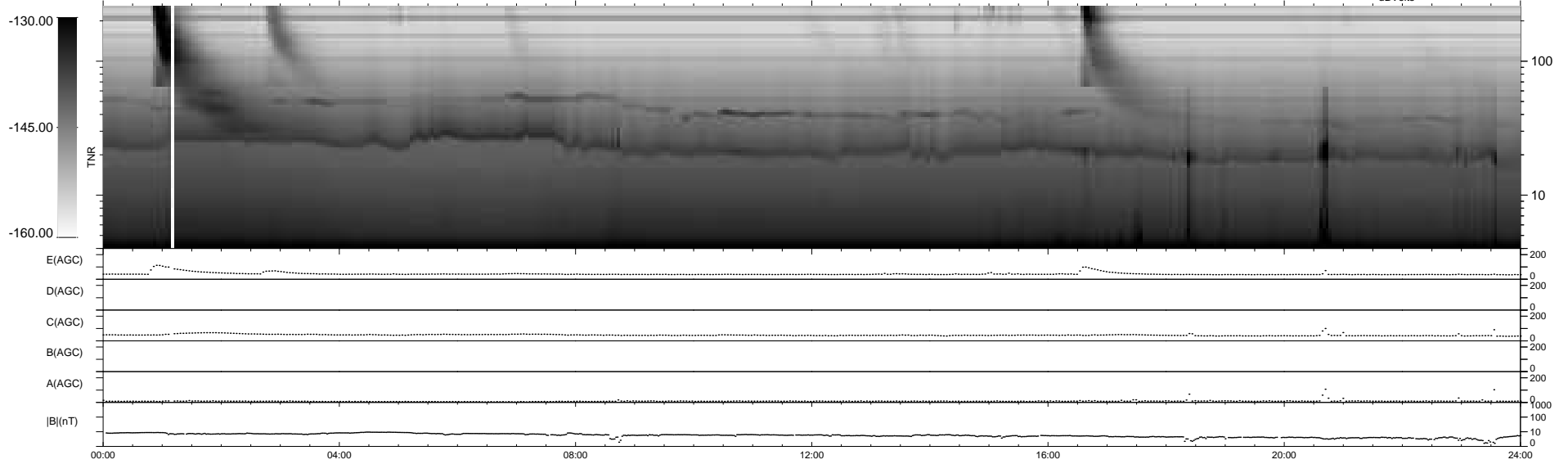
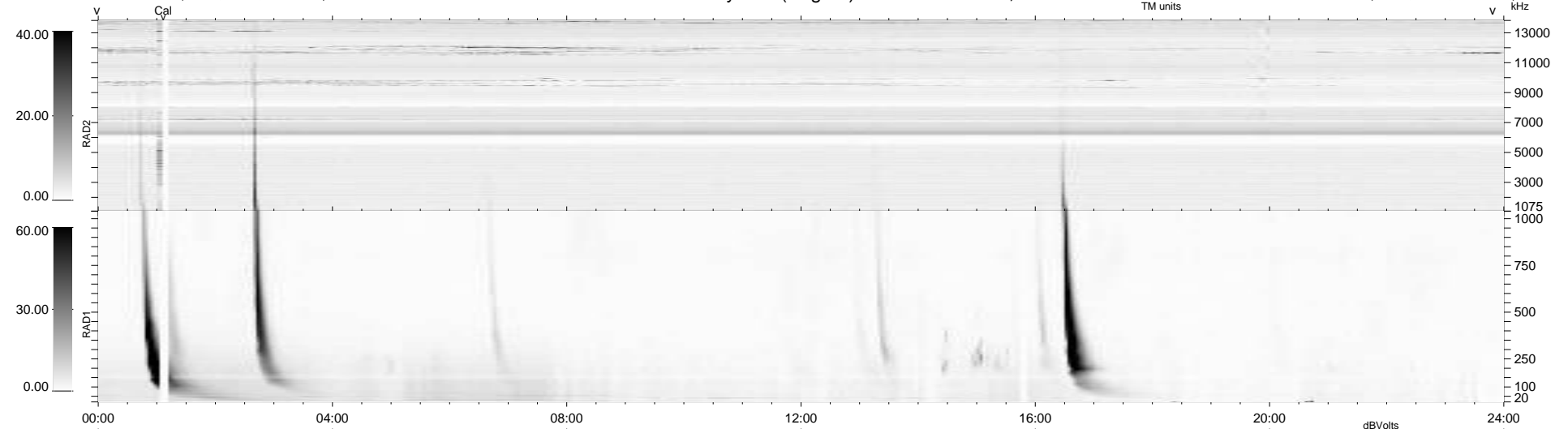
16 bad + 923 good MF/939MF projected (98%) - 0 missing MFs
 Avg interval = 180 secs
 Re = 263.67 (261.00, -28.33, 24.46 GSE)

windlib 2.0b

LZ version = v01

WIND/WAVES Summary Plot (Page 1) for 22-MAY-2011, DOY = 142

DAILY 2011-05-23 19:16:06
 Re = 263.78 (260.74, -31.61, 24.34 GSE)



```

RAD2
Antenna Ey .....
Mode LIN(1) .....
SUM/SEP SEP .....
Toggle OFF .....

RAD1
Antenna Ex .....
Mode LIS(2,4) .....
SUM/SEP SUM .....
Toggle OFF .....

TNR
Antenna ExEy .....
Mode A-32 .....
Sweep ACE .....
  
```