

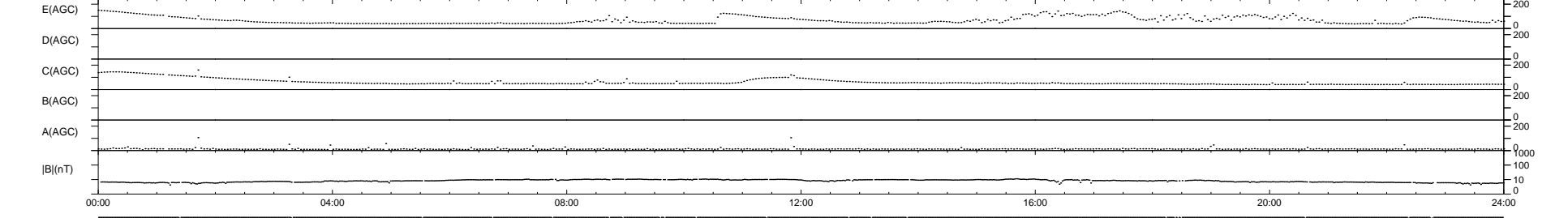
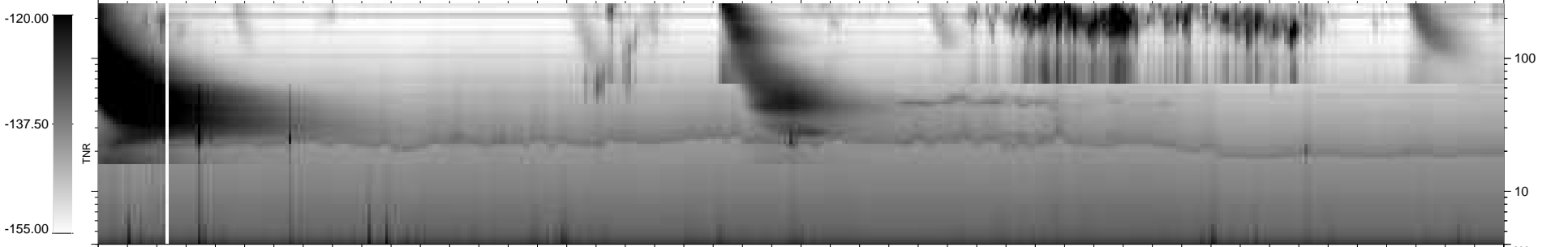
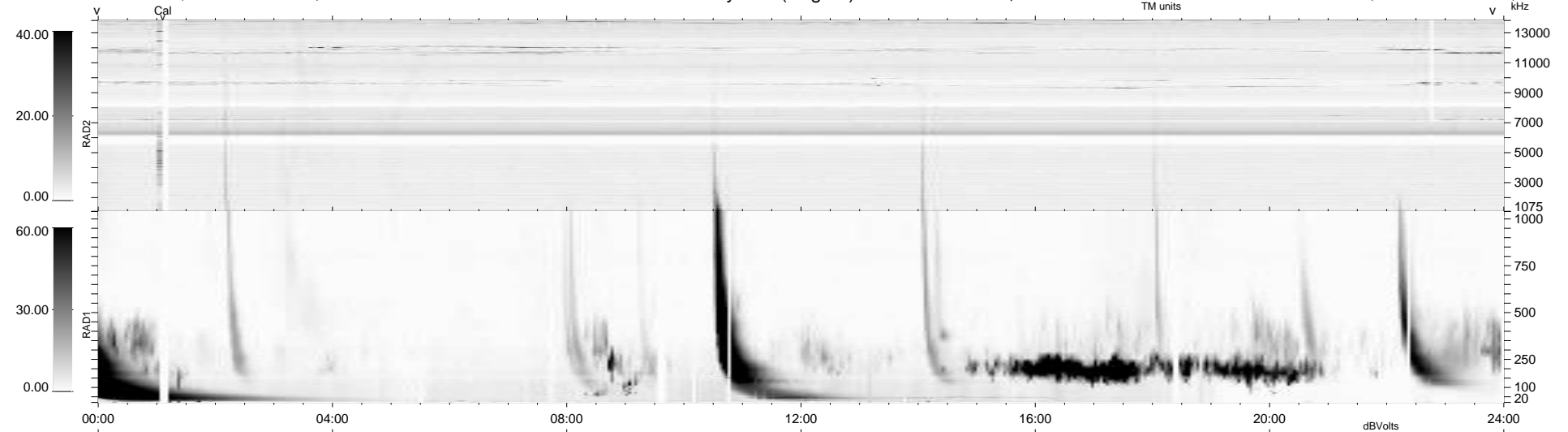
22 bad + 917 good MF/939MF projected (97%) - 0 missing MFs  
 Avg interval = 180 secs  
 Re = 263.34 (262.07, -7.54, 24.71 GSE)

windlib 2.0b

LZ version = v02

### WIND/WAVES Summary Plot (Page 1) for 16-MAY-2011, DOY = 136

DAILY 2011-05-19 11:13:09  
 Re = 263.34 (261.94, -11.04, 24.72 GSE)



RAD2  
 Antenna Ey .....  
 Mode LIN(1) .....  
 SUM/SEP SEP .....  
 Toggle OFF .....  
 RAD1  
 Antenna Ex .....  
 Mode LIS(2,4) .....  
 SUM/SEP SUM .....  
 Toggle OFF .....  
 TNR  
 Antenna ExEy .....  
 Mode A-32 .....  
 Sweep ACE .....