

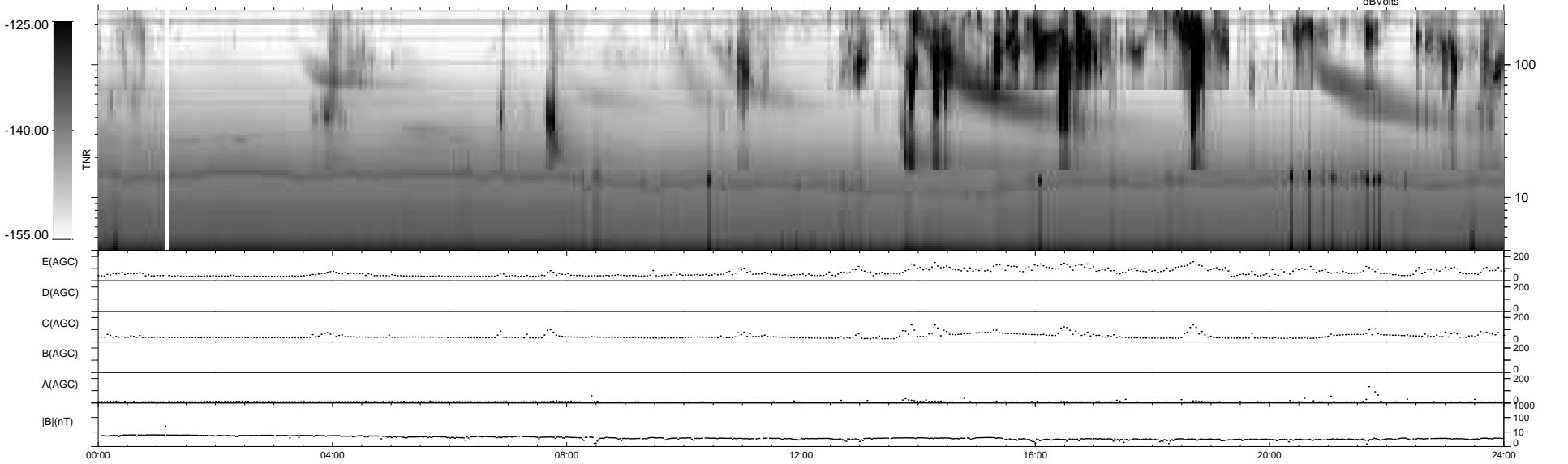
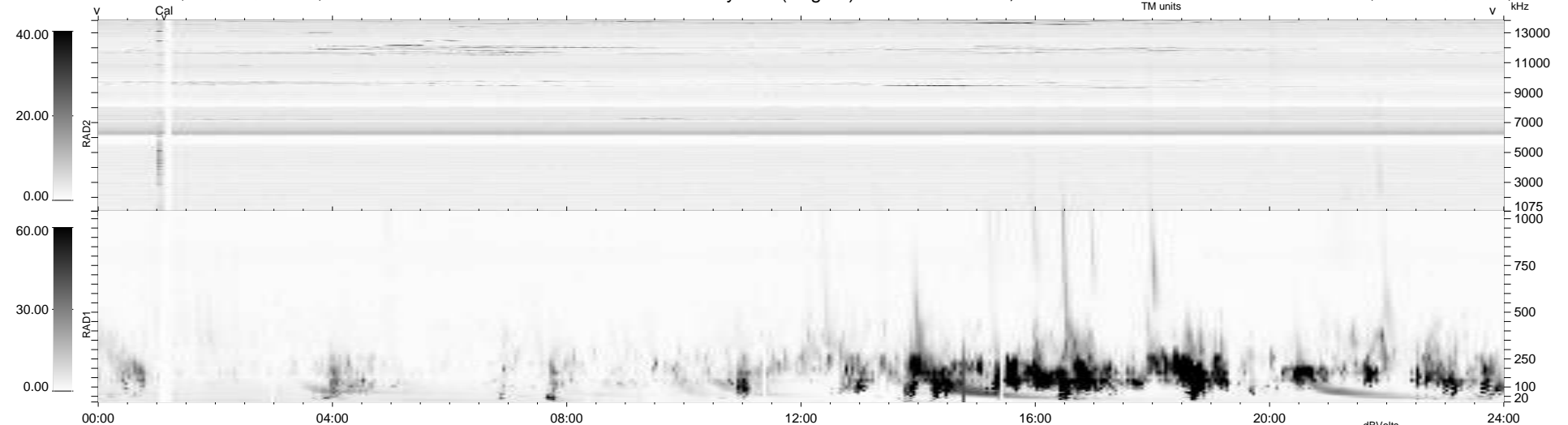
15 bad + 925 good MF/940MF projected (98%) - 0 missing MFs  
 Avg interval = 180 secs  
 Re = 263.14 (259.36, 38.38, 22.40 GSE)

windlib 2.0b

LZ version = v01

### WIND/WAVES Summary Plot (Page 1) for 02-MAY-2011, DOY = 122

DAILY 2011-05-05 12:36:03  
 Re = 263.38 (260.00, 35.41, 22.71 GSE)



RAD2  
 Antenna Ey .....  
 Mode LIN(1) .....  
 SUM/SEP SEP .....  
 Toggle OFF .....  
 RAD1  
 Antenna Ex .....  
 Mode LIS(2,4) .....  
 SUM/SEP SUM .....  
 Toggle OFF .....  
 TNR  
 Antenna ExEy .....  
 Mode A-32 .....  
 Sweep ACE .....