

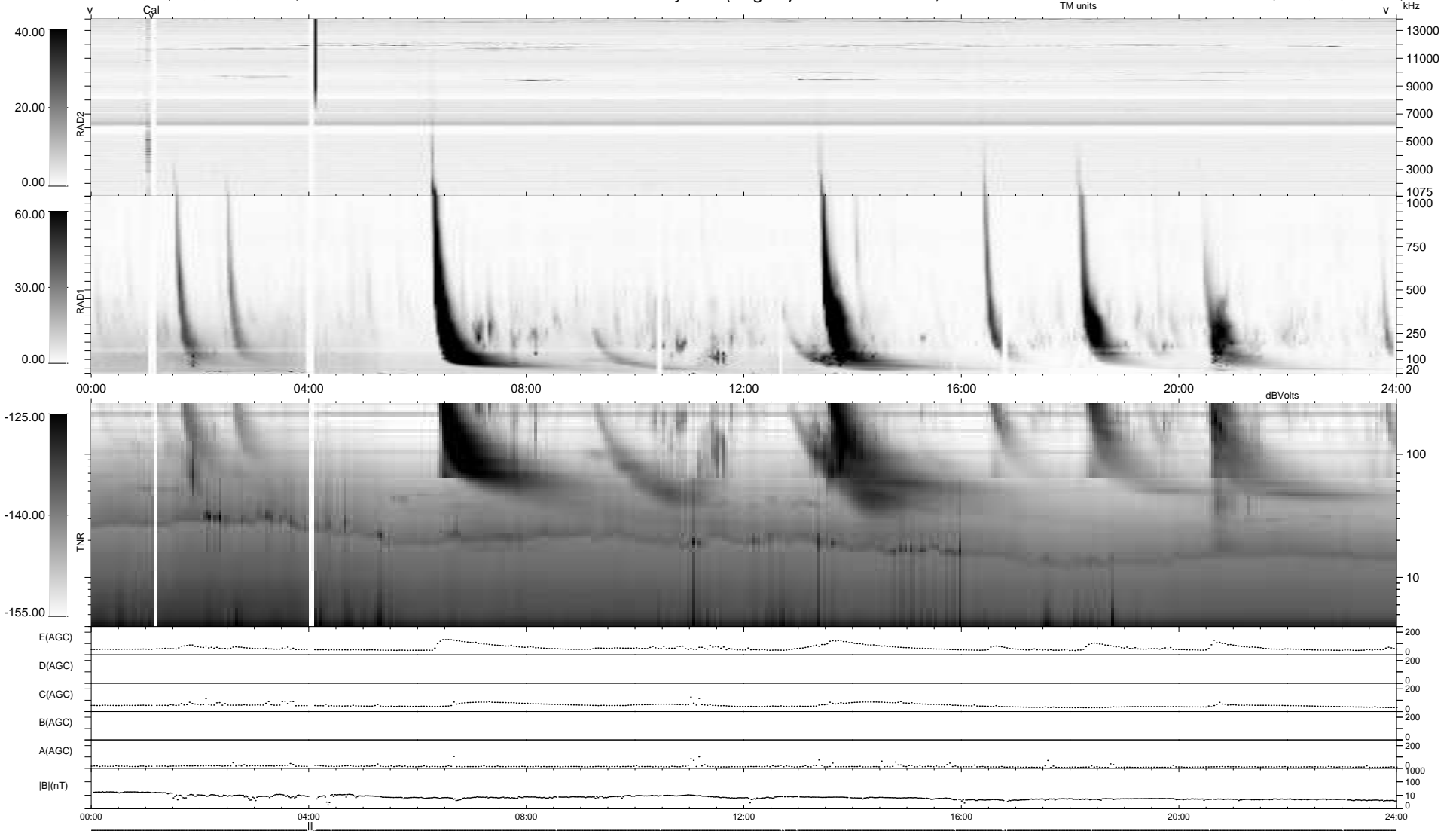
17 bad + 918 good MF/939MF projected (97%) - 4 missing MFs  
 Avg interval = 180 secs  
 Re = -262.54 (257.87, 44.27, 21.72 GSE)

windlib 2.0b

LZ version = v01

### WIND/WAVES Summary Plot (Page 1) for 30-APR-2011, DOY = 120

DAILY 2011-05-05 11:37:01  
 Re = 262.86 (258.65, 41.36, 22.07 GSE)



```

RAD2
Antenna Ey .....
Mode LIN(1) .....
SUM/SEP SEP .....
Toggle OFF .....

RAD1
Antenna Ex .....
Mode LIS(2,4) .....
SUM/SEP SUM .....
Toggle OFF .....

TNR
Antenna ExEy .....
Mode A-32 .....
Sweep ACE .....
  
```