

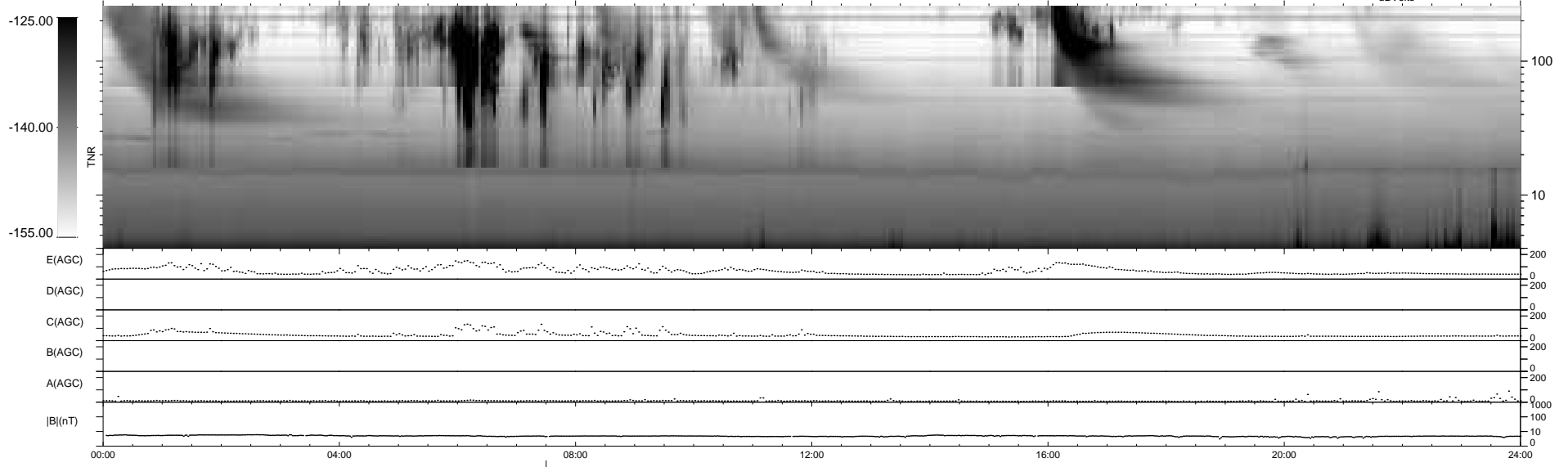
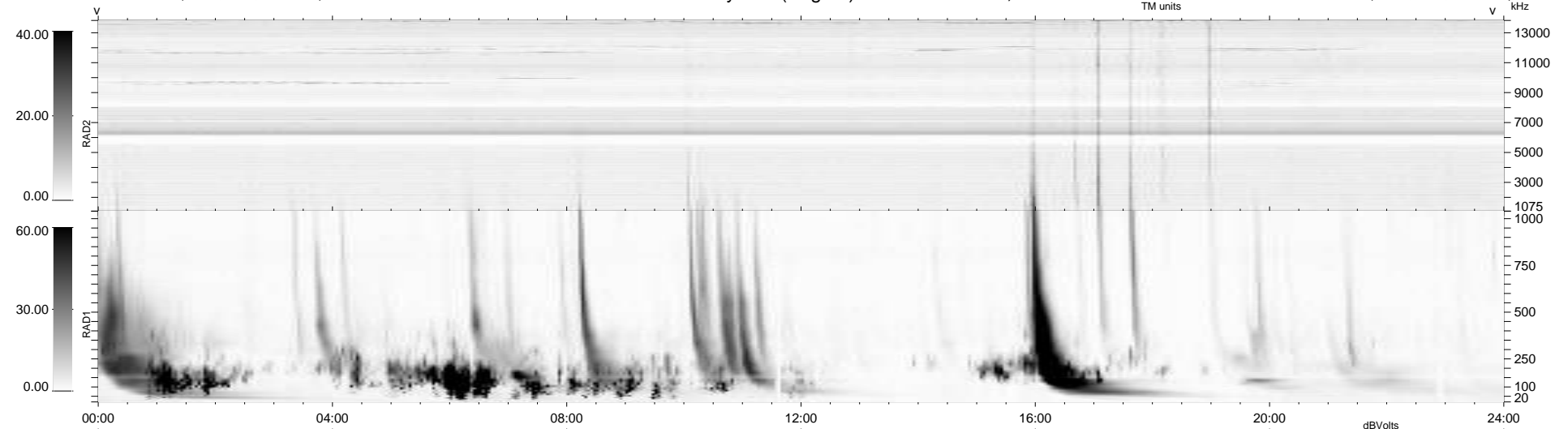
5 bad + 933 good MF/939MF projected (99%) - 1 missing MF  
 Avg interval = 180 secs  
 Re = 255.07 (239.57, 86.63, 12.72 GSE)

windlib 2.0b

LZ version = v01

### WIND/WAVES Summary Plot (Page 1) for 13-APR-2011, DOY = 103

DAILY 2011-04-14 17:35:07  
 Re = 255.51 (240.65, 84.82, 13.36 GSE)



RAD2  
 Antenna Ey .....  
 Mode LIN(1) .....  
 SUM/SEP SEP .....  
 Toggle OFF .....  
 RAD1  
 Antenna Ex .....  
 Mode LIS(2,4) .....  
 SUM/SEP SUM .....  
 Toggle OFF .....  
 TNR  
 Antenna ExEy .....  
 Mode A-32 .....  
 Sweep ACE .....