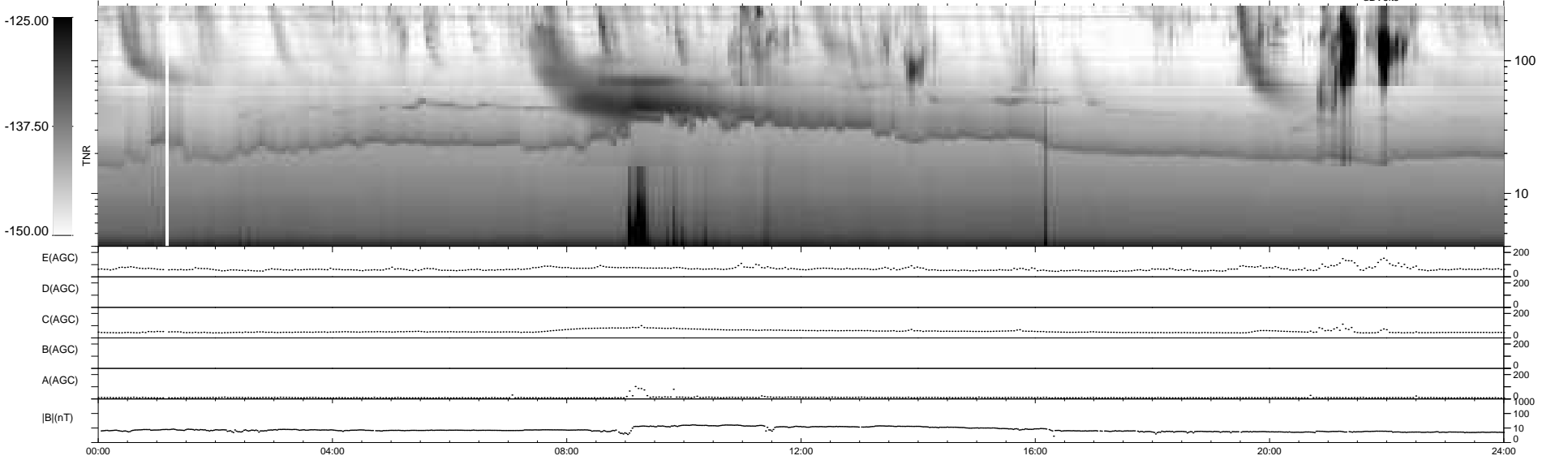
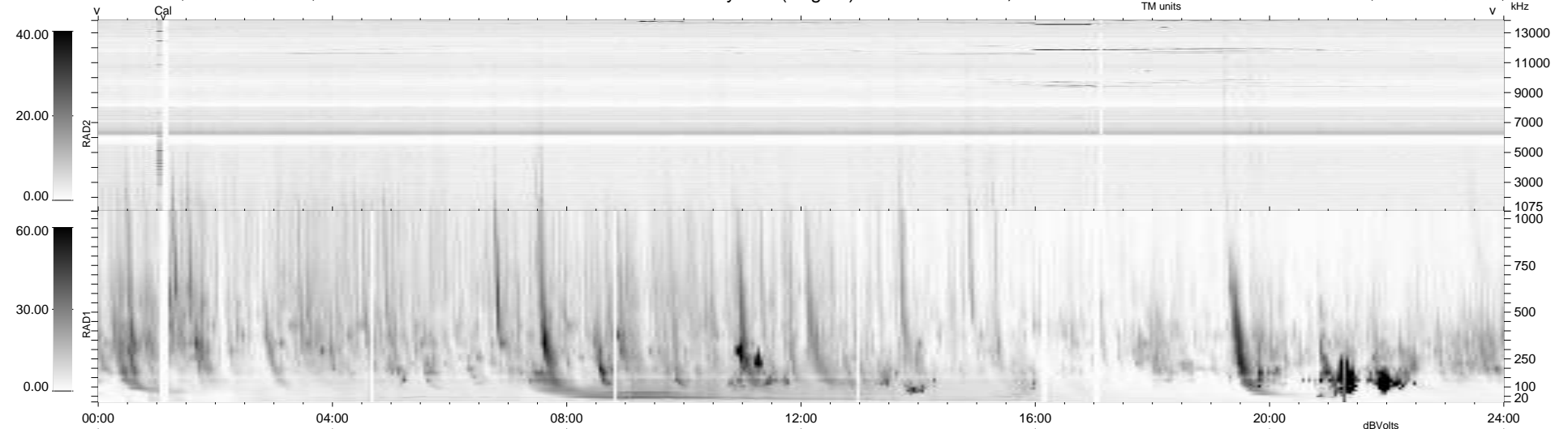


10 bad + 929 good MF/939MF projected (98%) - 0 missing MFs
 Avg interval = 180 secs
 Re = 250.69 (231.63, 95.54, 7.93 GSE)

windlib 2.0b LZ version = v01
 DAILY 2011-04-08 04:35:06
 Re = 251.48 (232.82, 94.68, 8.64 GSE)

WIND/WAVES Summary Plot (Page 1) for 06-APR-2011, DOY = 96



RAD2
 Antenna Ey
 Mode LIN(1)
 SUM/SEP SEP
 Toggle OFF
 RAD1
 Antenna Ex
 Mode LIS(2,4)
 SUM/SEP SUM
 Toggle OFF
 TNR
 Antenna ExEy
 Mode A-32
 Sweep ACE