

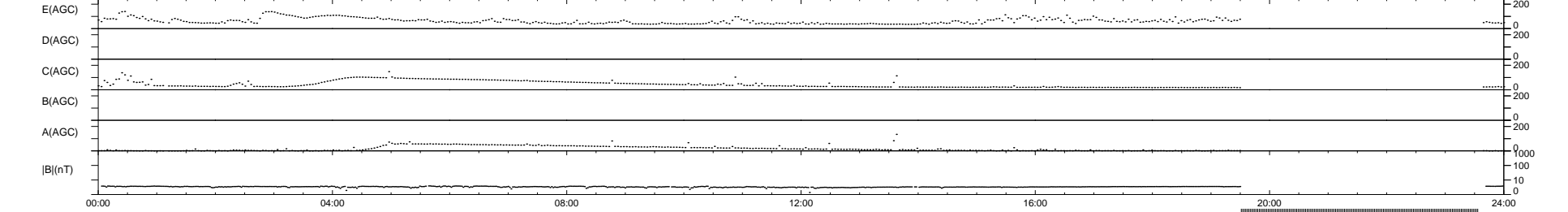
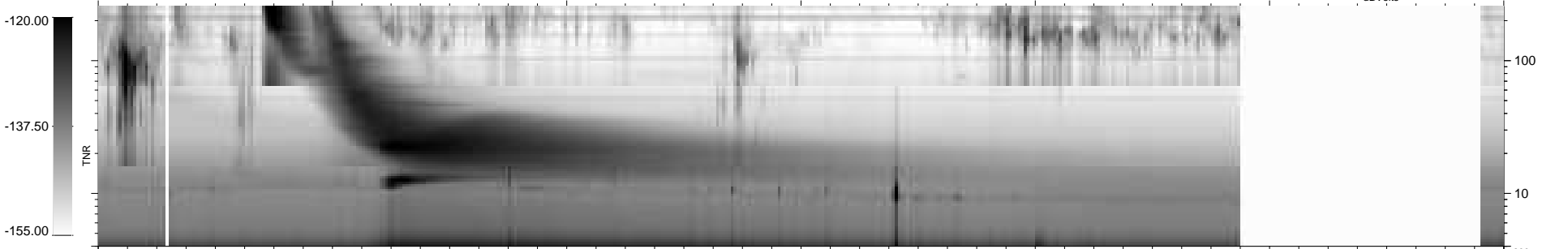
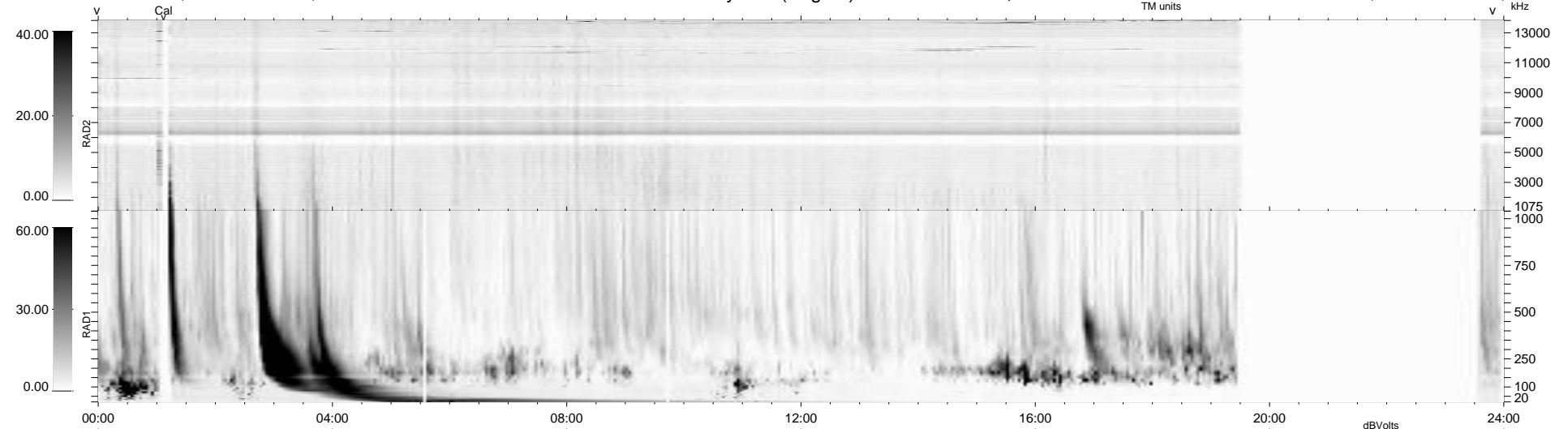
9 bad + 771 good MF/939MF projected (82%) - 159 missing MFs
 Avg interval = 180 secs
 Re = - 248.89 (229.16, 96.91, 6.47 GSE)

windlib 2.0b

LZ version = v01

WIND/WAVES Summary Plot (Page 1) for 04-APR-2011, DOY = 94

DAILY 2011-04-05 21:35:07
 Re = 249.82 (230.40, 96.29, 7.20 GSE)



```

RAD2
Antenna Ey .....
Mode LIN(1) .....
SUM/SEP SEP .....
Toggle OFF .....

RAD1
Antenna Ex .....
Mode LIS(2,4) .....
SUM/SEP SUM .....
Toggle OFF .....

TNR
Antenna ExEy .....
Mode A-32 .....
Sweep ACE .....
  
```