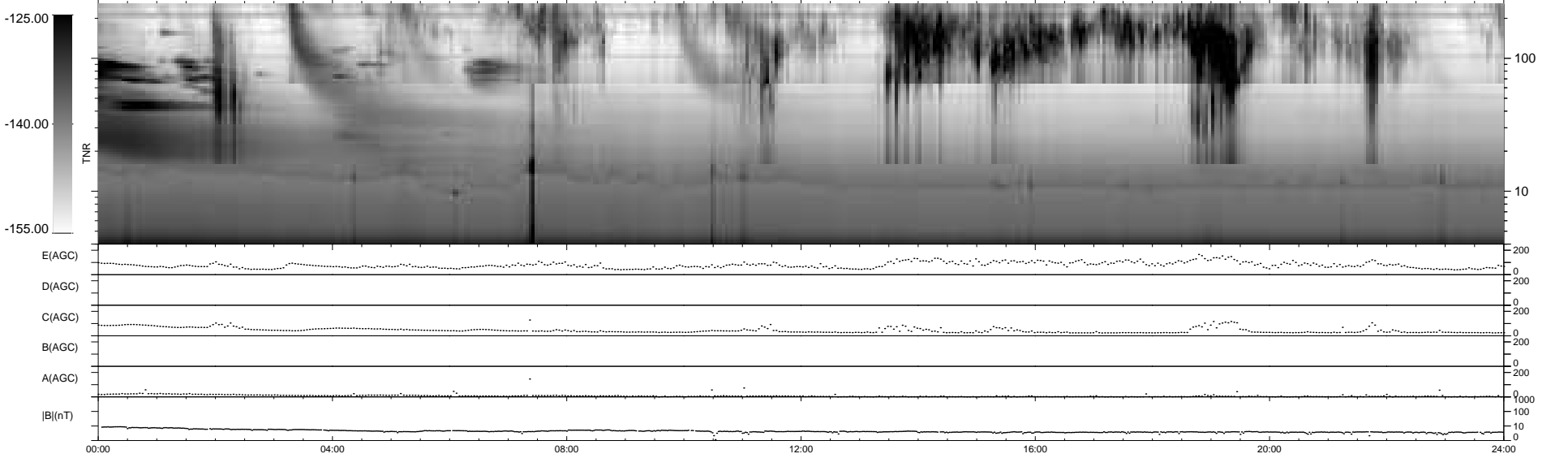
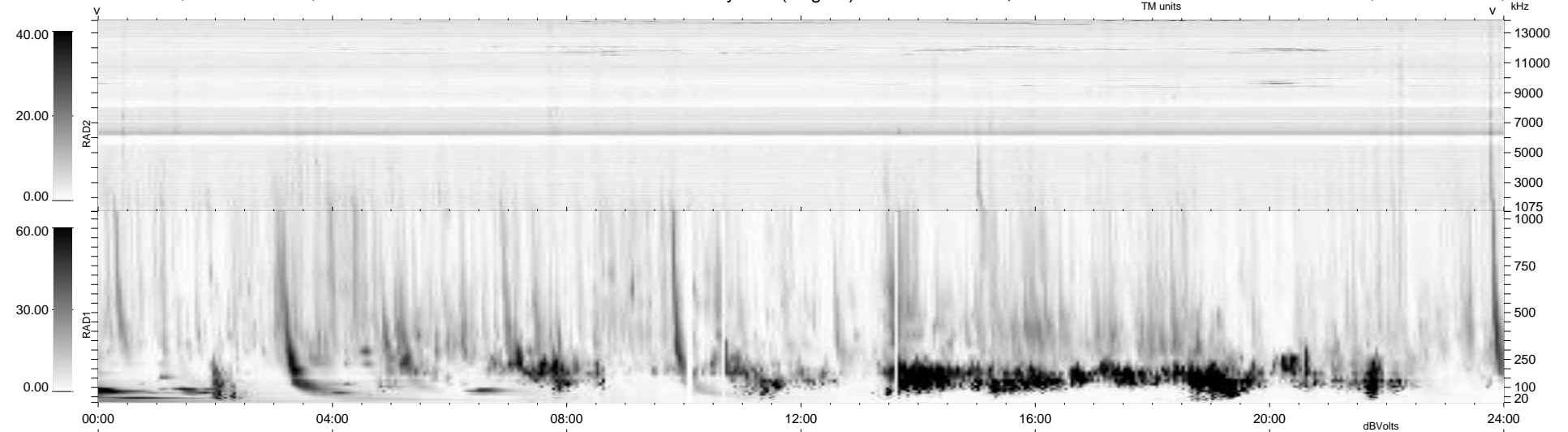


10 bad + 929 good MF/939MF projected (98%) - 0 missing MFs
 Avg interval = 180 secs
 Re = -247.90 (227.89, 97.41, 5.72 GSE)

windlib 2.0b LZ version = v01
 DAILY 2011-04-04 04:35:07
 Re = 248.89 (229.15, 96.91, 6.46 GSE)

WIND/WAVES Summary Plot (Page 1) for 03-APR-2011, DOY = 93



RAD2
 Antenna Ey
 Mode LIN(1)
 SUM/SEP SEP
 Toggle OFF
 RAD1
 Antenna Ex
 Mode LIS(2,4)
 SUM/SEP SUM
 Toggle OFF
 TNR
 Antenna ExEy
 Mode A-32
 Sweep ACE