

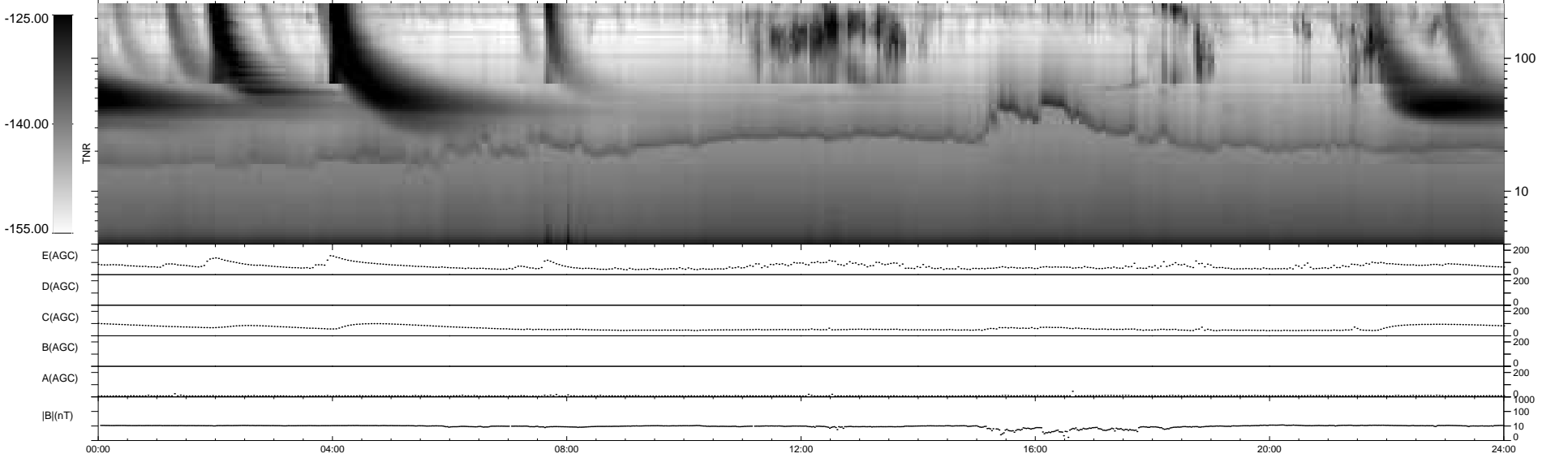
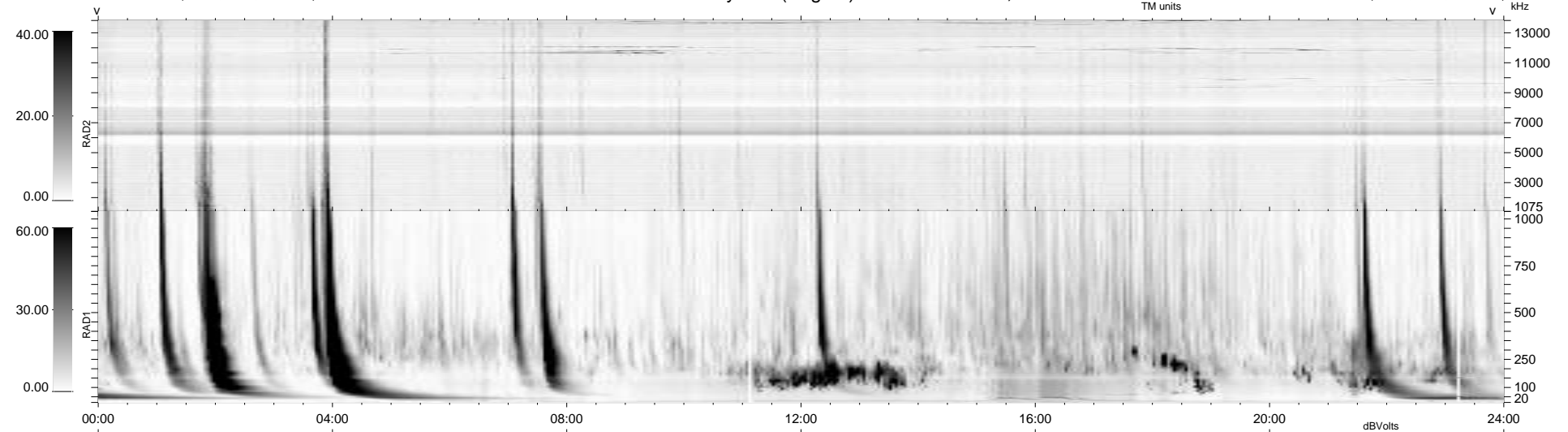
4 bad + 936 good MF/940MF projected (99%) - 0 missing MFs
 Avg interval = 180 secs
 Re = 245.75 (225.29, 98.08, 4.21 GSE)

windlib 2.0b

LZ version = v01

WIND/WAVES Summary Plot (Page 1) for 01-APR-2011, DOY = 91

DAILY 2011-04-02 04:35:07
 Re = 246.85 (226.59, 97.80, 4.96 GSE)



RAD2
 Antenna Ey
 Mode LIN(1)
 SUM/SEP SEP
 Toggle OFF
 RAD1
 Antenna Ex
 Mode LIS(2,4)
 SUM/SEP SUM
 Toggle OFF
 TNR
 Antenna ExEy
 Mode A-32
 Sweep ACE