

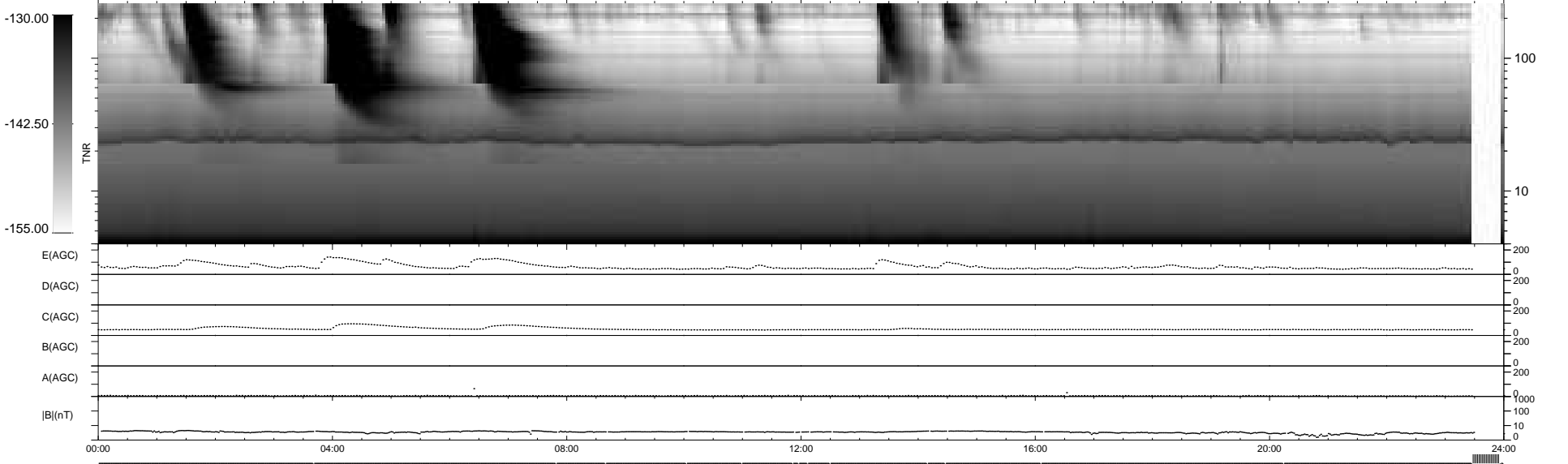
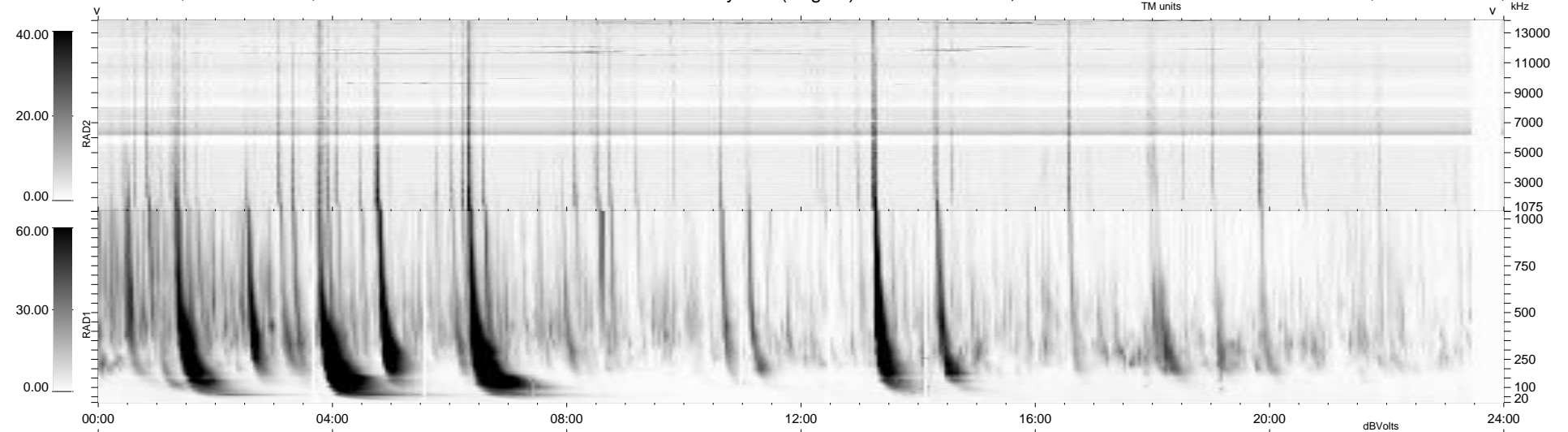
16 bad + 905 good MF/939MF projected (96%) - 18 missing MFs
 Avg interval = 180 secs
 Re = 240.89 (219.97, 98.19, 1.09 GSE)

windlib 2.0b

LZ version = v02

WIND/WAVES Summary Plot (Page 1) for 28-MAR-2011, DOY = 87

DAILY 2011-03-31 12:36:03
 Re = 242.15 (221.29, 98.31, 1.87 GSE)



RAD2
 Antenna Ey
 Mode LIN(1)
 SUM/SEP SEP
 Toggle OFF
 RAD1
 Antenna Ex
 Mode LIS(2,4)
 SUM/SEP SUM
 Toggle OFF
 TNR
 Antenna ExEy
 Mode A-32
 Sweep ACE