

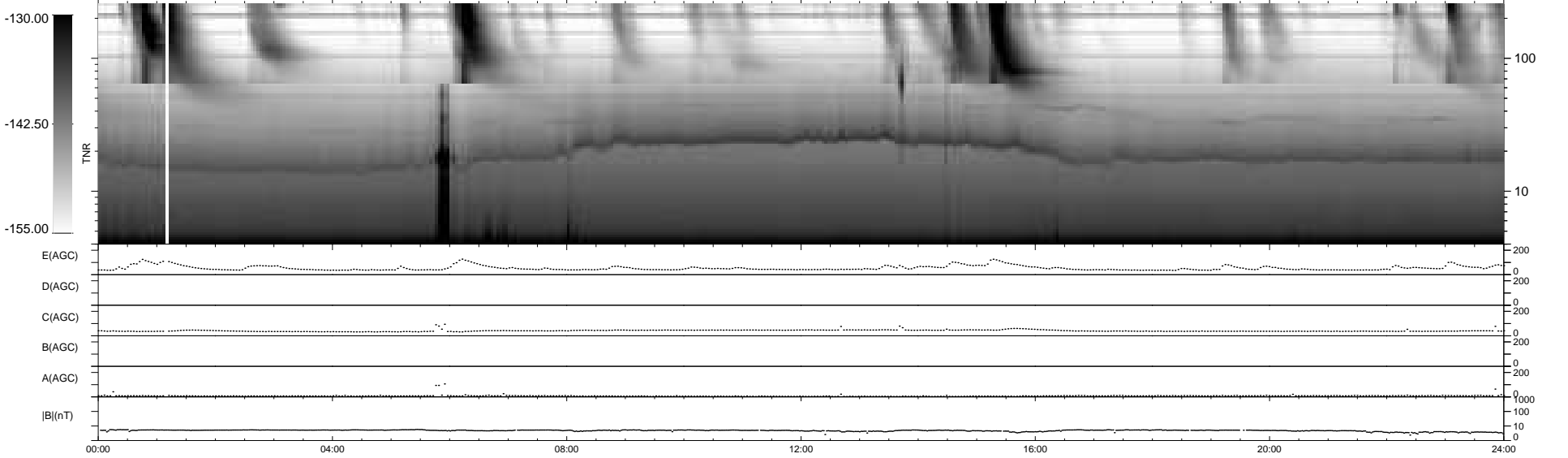
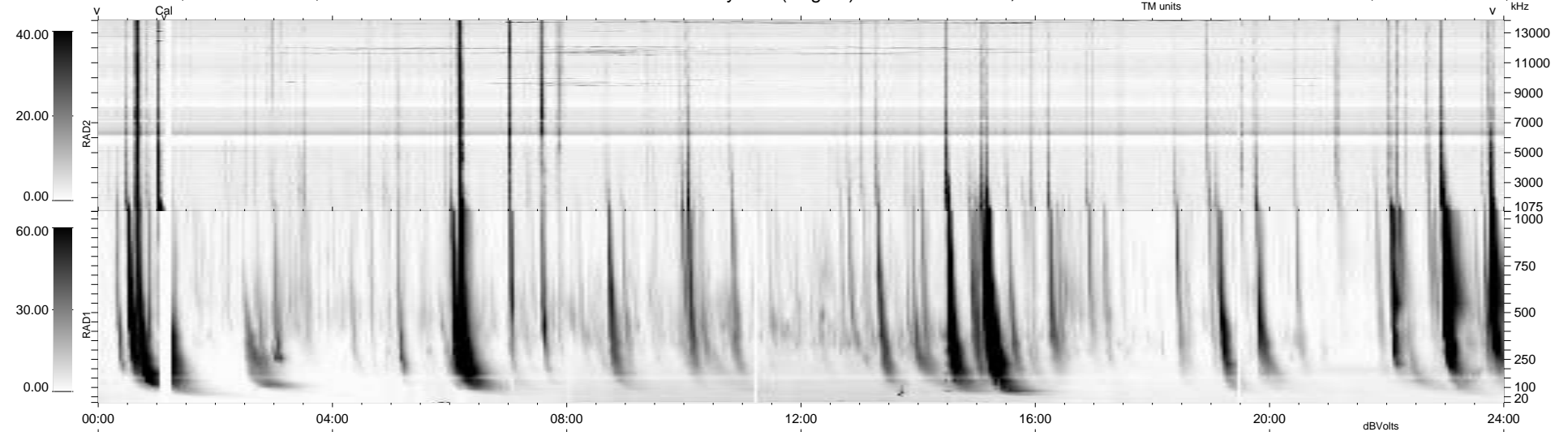
8 bad + 932 good MF/940MF projected (99%) - 0 missing MFs
 Avg interval = 180 secs
 Re = 236.96 (216.07, 97.29, -1.28 GSE)

windlib 2.0b

LZ version = v01

WIND/WAVES Summary Plot (Page 1) for 25-MAR-2011, DOY = 84

DAILY 2011-03-26 21:35:06
 Re = 238.28 (217.34, 97.68, -0.49 GSE)



```

RAD2
Antenna Ey .....
Mode LIN(1) .....
SUM/SEP SEP .....
Toggle OFF .....

RAD1
Antenna Ex .....
Mode LIS(2,4) .....
SUM/SEP SUM .....
Toggle OFF .....

TNR
Antenna ExEy .....
Mode A-32 .....
Sweep ACE .....
  
```