

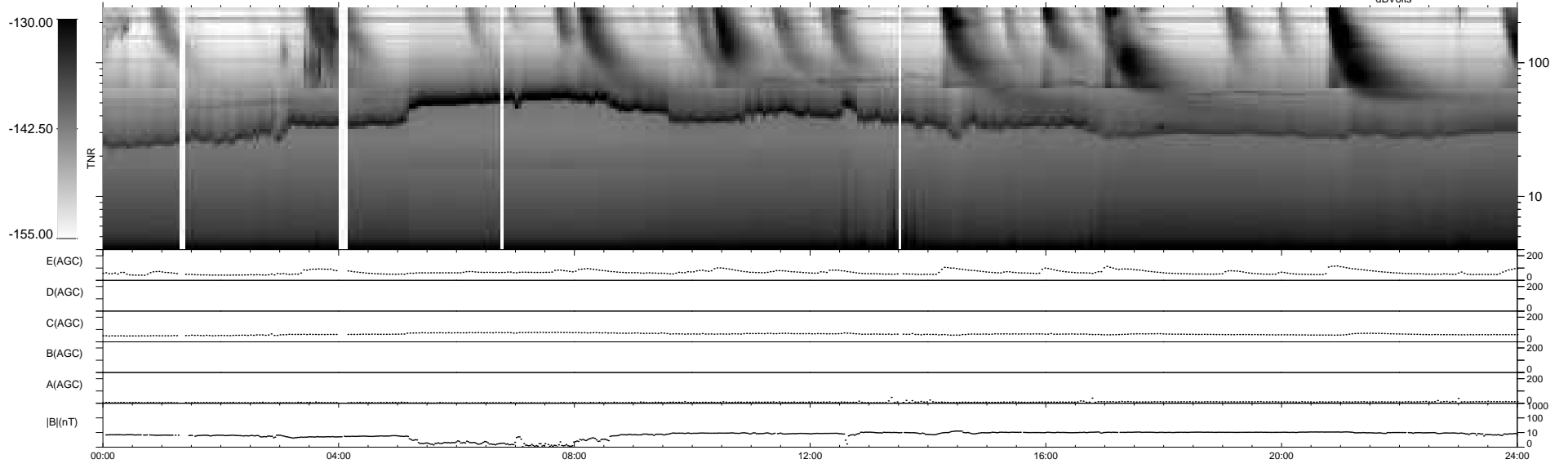
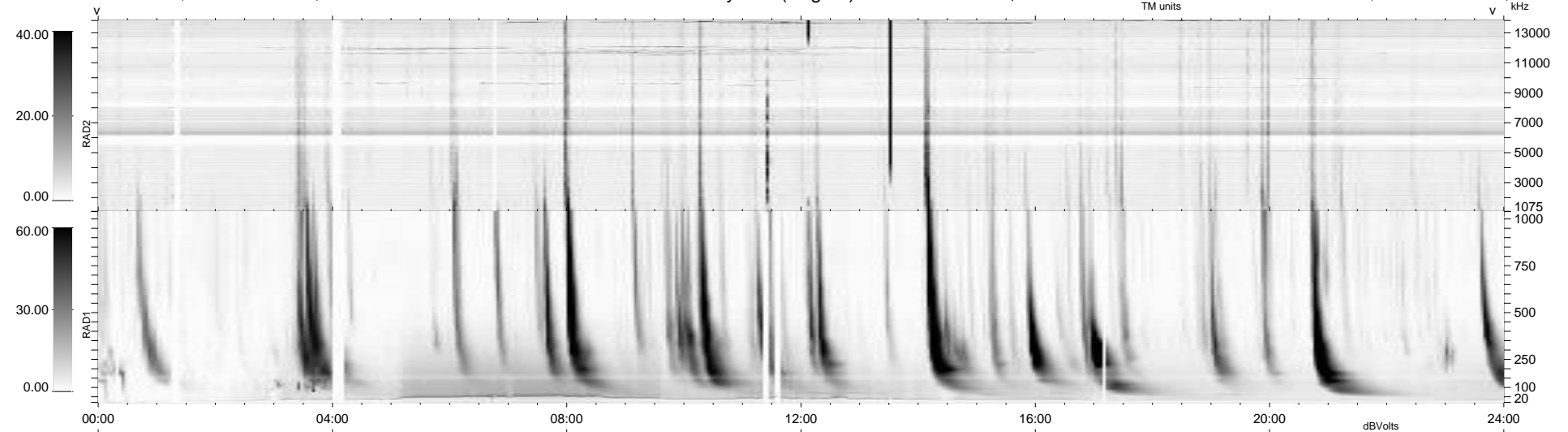
36 bad + 903 good MF/939MF projected (96%) - 0 missing MFs  
 Avg interval = 180 secs  
 Re = 233.01 (212.48, 95.58, -3.61 GSE)

windlib 2.0b

LZ version = v01

### WIND/WAVES Summary Plot (Page 1) for 22-MAR-2011, DOY = 81

DAILY 2011-03-24 05:35:06  
 Re = 234.31 (213.62, 96.24, -2.85 GSE)



RAD2  
 Antenna Ey  
 Mode LIN(1)  
 SUM/SEP SEP  
 Toggle OFF

RAD1  
 Antenna Ex  
 Mode LIS(2,4)  
 SUM/SEP SUM  
 Toggle OFF

TNR  
 Antenna ExEy  
 Mode A-32  
 Sweep ACE