

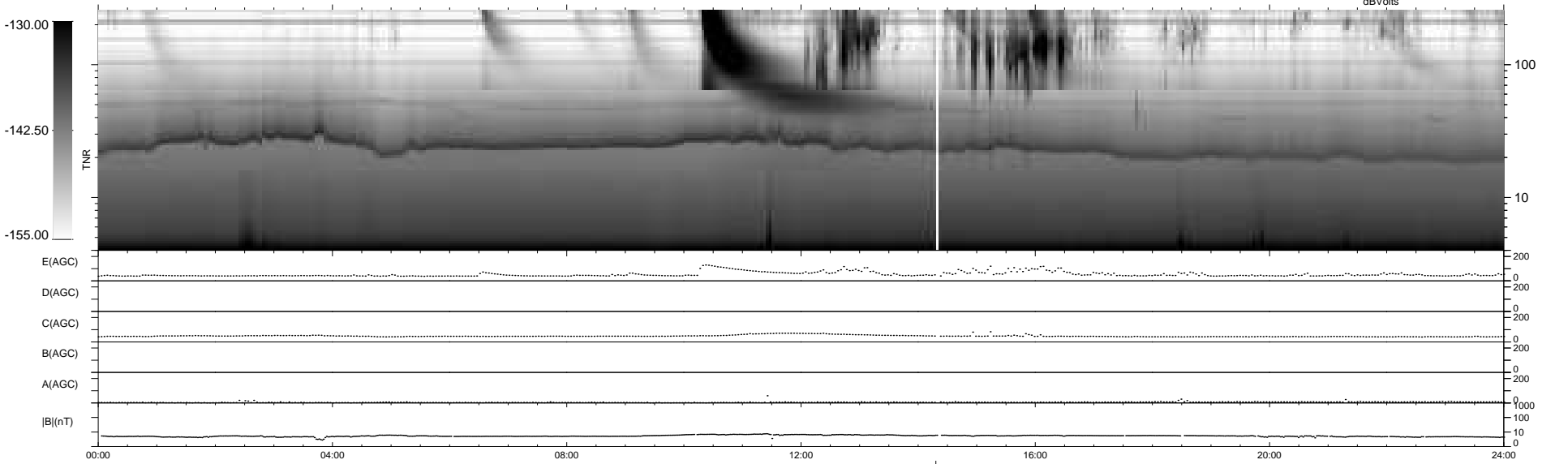
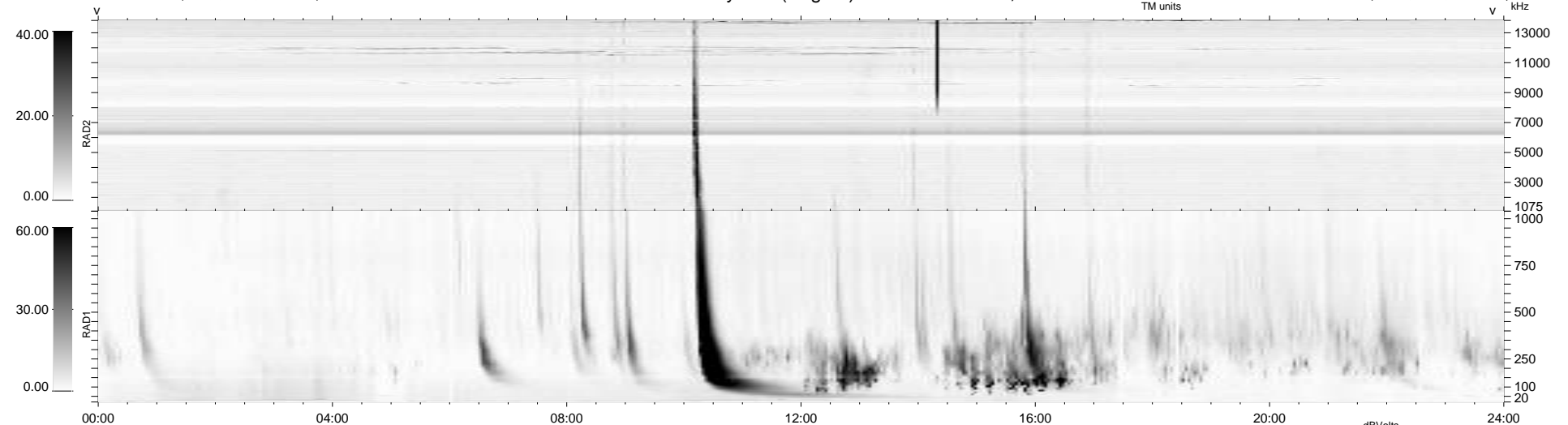
12 bad + 926 good MF/939MF projected (98%) - 1 missing MF  
 Avg interval = 180 secs  
 Re = 230.44 (210.36, 93.93, -5.17 GSE)

windlib 2.0b

LZ version = v01

### WIND/WAVES Summary Plot (Page 1) for 20-MAR-2011, DOY = 79

DAILY 2011-03-21 20:35:06  
 Re = 231.71 (211.38, 94.83, -3.80 GSE)



RAD2  
 Antenna Ey .....  
 Mode LIN(1) .....  
 SUM/SEP SEP .....  
 Toggle OFF .....  
 RAD1  
 Antenna Ex .....  
 Mode LIS(2,4) .....  
 SUM/SEP SUM .....  
 Toggle OFF .....  
 TNR  
 Antenna ExEy .....  
 Mode A-32 .....  
 Sweep ACE .....