

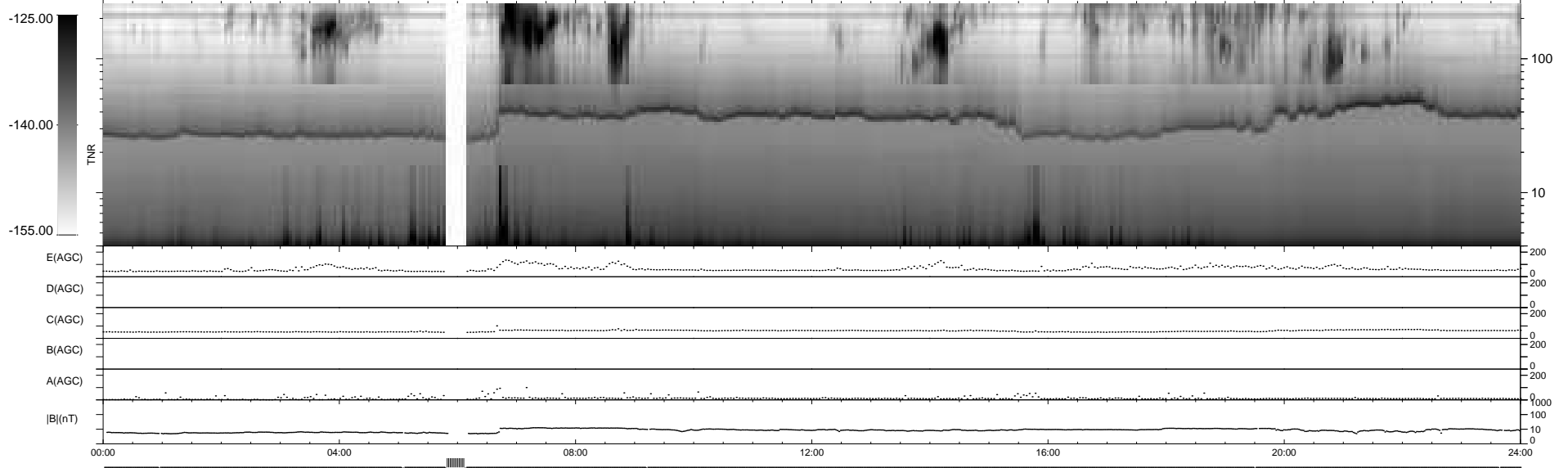
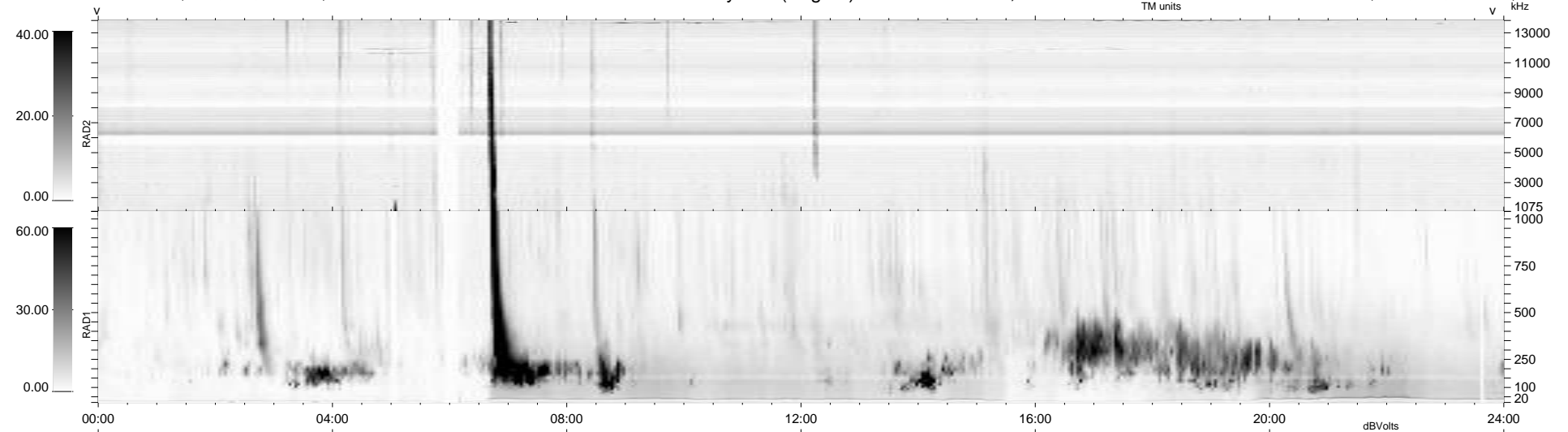
8 bad + 919 good MF/939MF projected (97%) - 12 missing MFs
 Avg interval = 180 secs
 Re = - 217.96 (203.30, 77.66, -12.10 GSE)

windlib 2.0b

LZ version = v01

WIND/WAVES Summary Plot (Page 1) for 10-MAR-2011, DOY = 69

DAILY 2011-03-12 02:35:08
 Re = 219.23 (203.83, 79.91, -11.47 GSE)



RAD2
 Antenna Ey
 Mode LIN(1)
 SUM/SEP SEP
 Toggle OFF

RAD1
 Antenna Ex
 Mode LIS(2,4)
 SUM/SEP SUM
 Toggle OFF

TNR
 Antenna ExEy
 Mode A-32
 Sweep ACE