

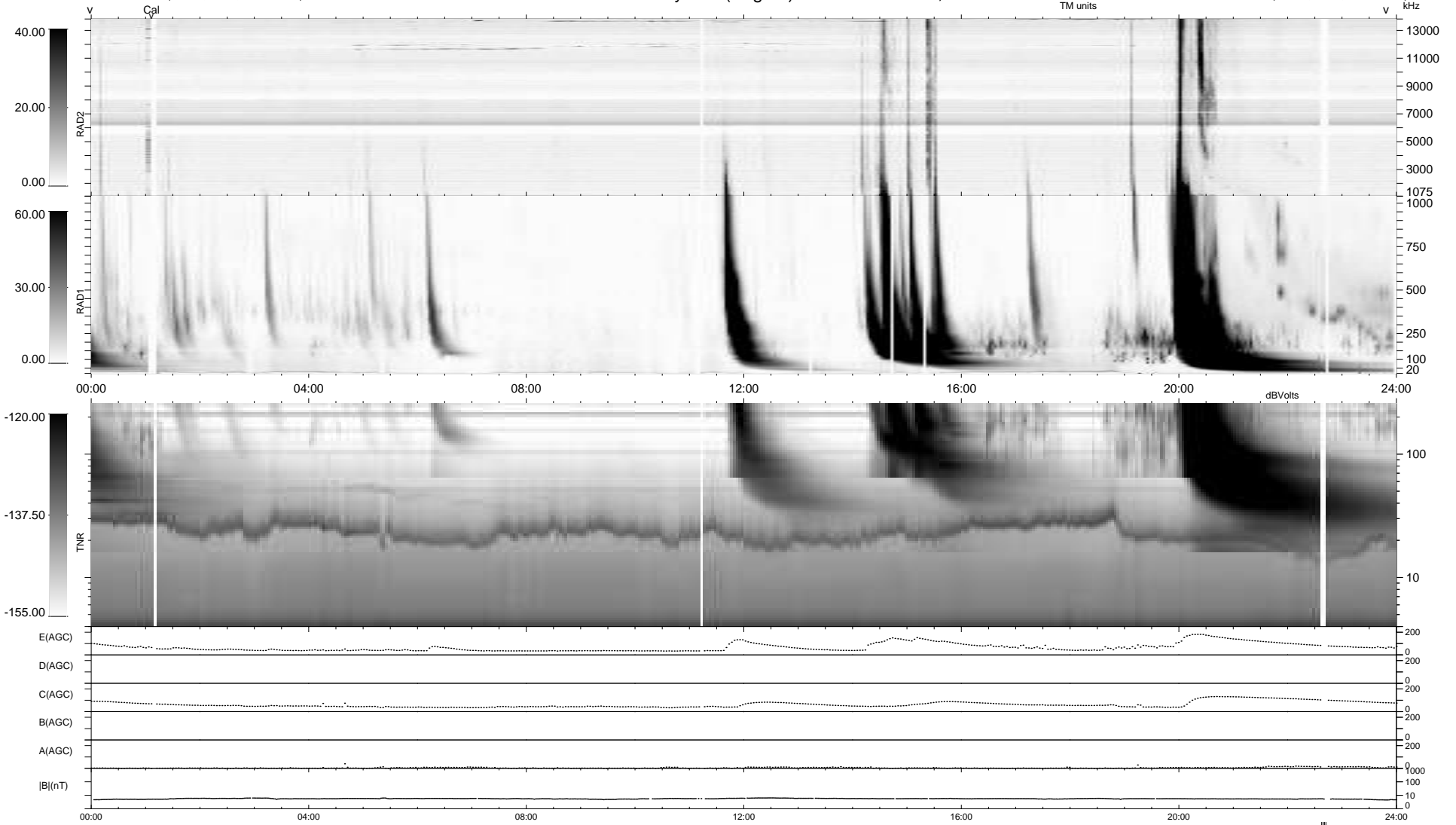
17 bad + 918 good MF/939MF projected (97%) - 4 missing MFs
 Avg interval = 180 secs
 Re = -214.07 (201.80, 70.07, -13.90 GSE)

windlib 2.0b

LZ version = v01

WIND/WAVES Summary Plot (Page 1) for 07-MAR-2011, DOY = 66

DAILY 2011-03-08 13:35:07
 Re = 215.36 (202.28, 72.70, -13.32 GSE)



RAD2
 Antenna Ey
 Mode LIN(1)
 SUM/SEP SEP
 Toggle OFF

RAD1
 Antenna Ex
 Mode LIS(2,4)
 SUM/SEP SUM
 Toggle OFF

TNR
 Antenna ExEy
 Mode A-32
 Sweep ACE