

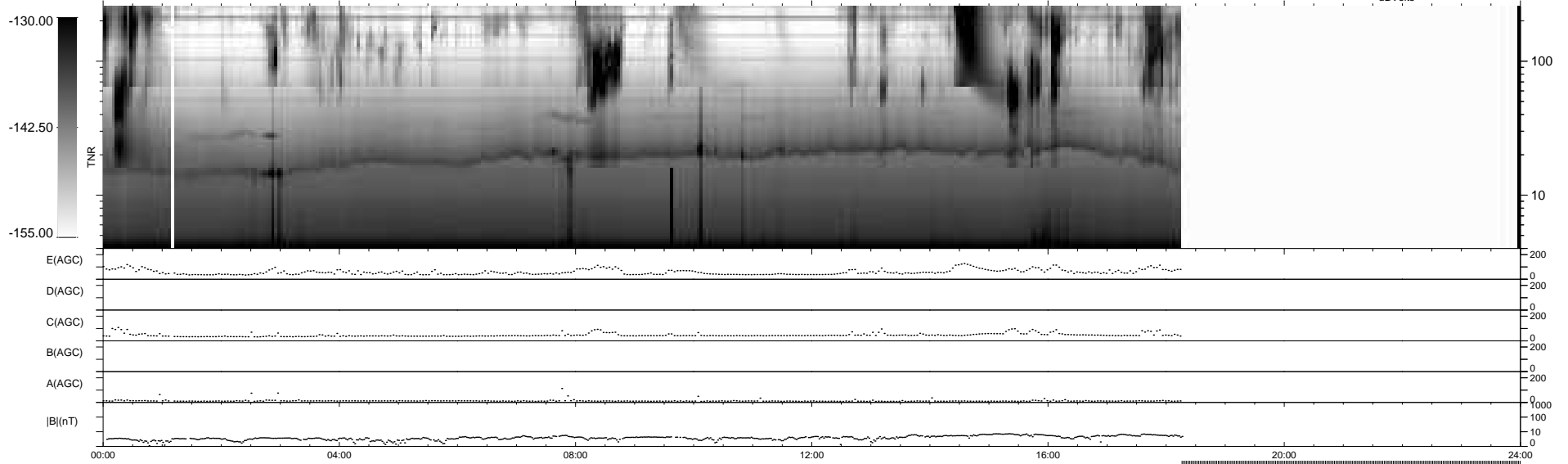
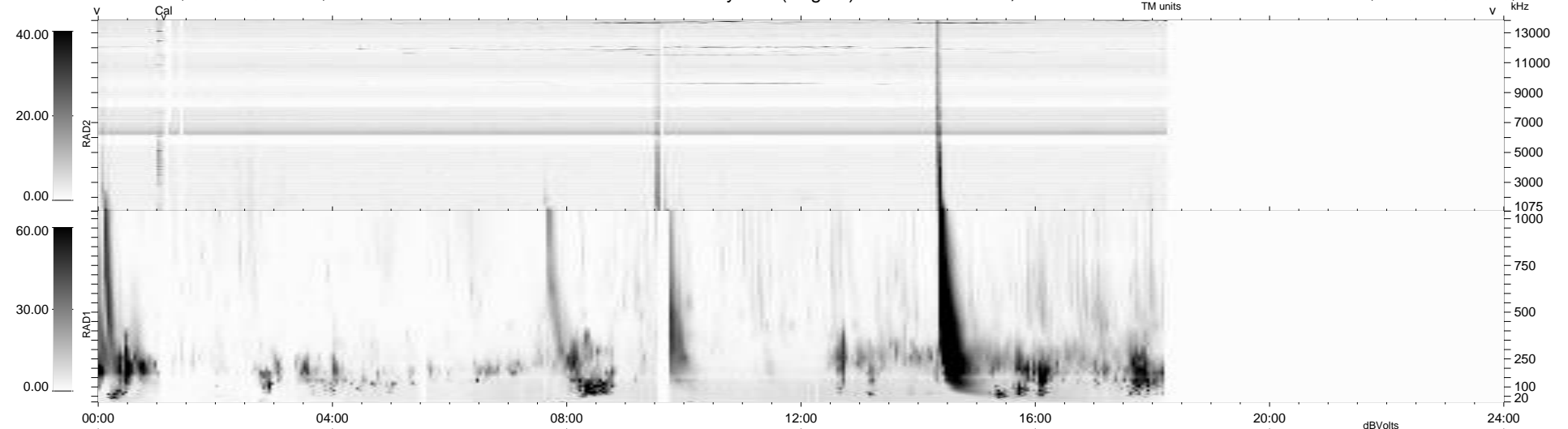
16 bad + 698 good MF/939MF projected (74%) - 225 missing MFs
 Avg interval = 180 secs
 Re = -208.86 (199.88, 58.42, -16.05 GSE)

windlib 2.0b

LZ version = v01

WIND/WAVES Summary Plot (Page 1) for 03-MAR-2011, DOY = 62

DAILY 2011-03-04 19:35:07
 Re = 210.14 (200.35, 61.45, -15.55 GSE)



```

RAD2
Antenna Ey .....
Mode LIN(1) .....
SUM/SEP SEP .....
Toggle OFF .....

RAD1
Antenna Ex .....
Mode LIS(2,4) .....
SUM/SEP SUM .....
Toggle OFF .....

TNR
Antenna ExEy .....
Mode A-32 .....
Sweep ACE .....
  
```