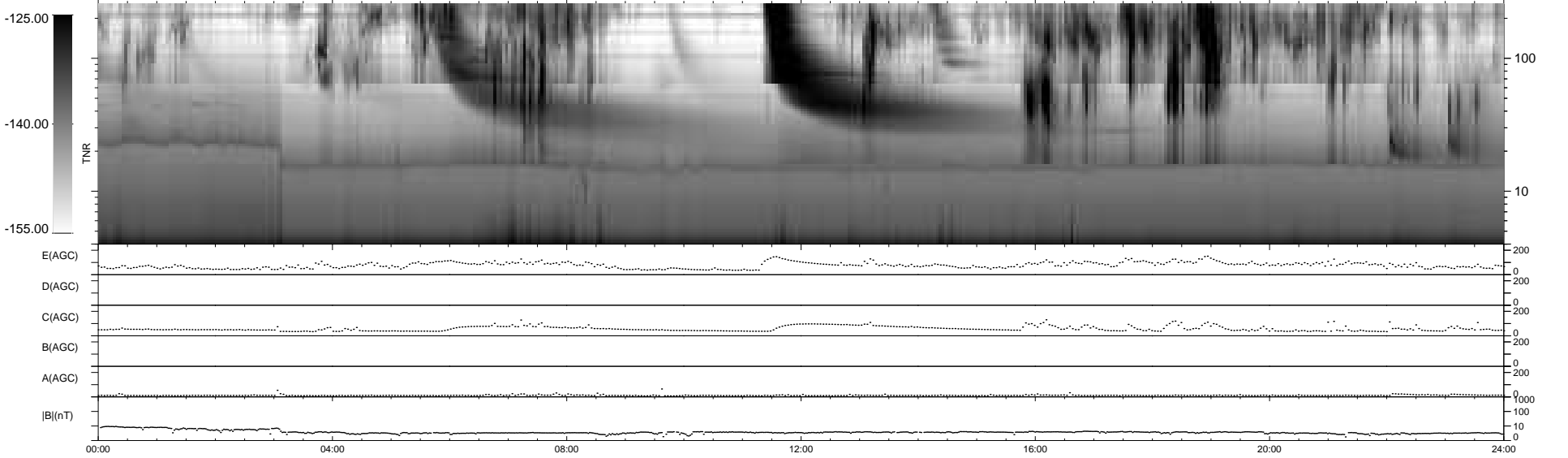
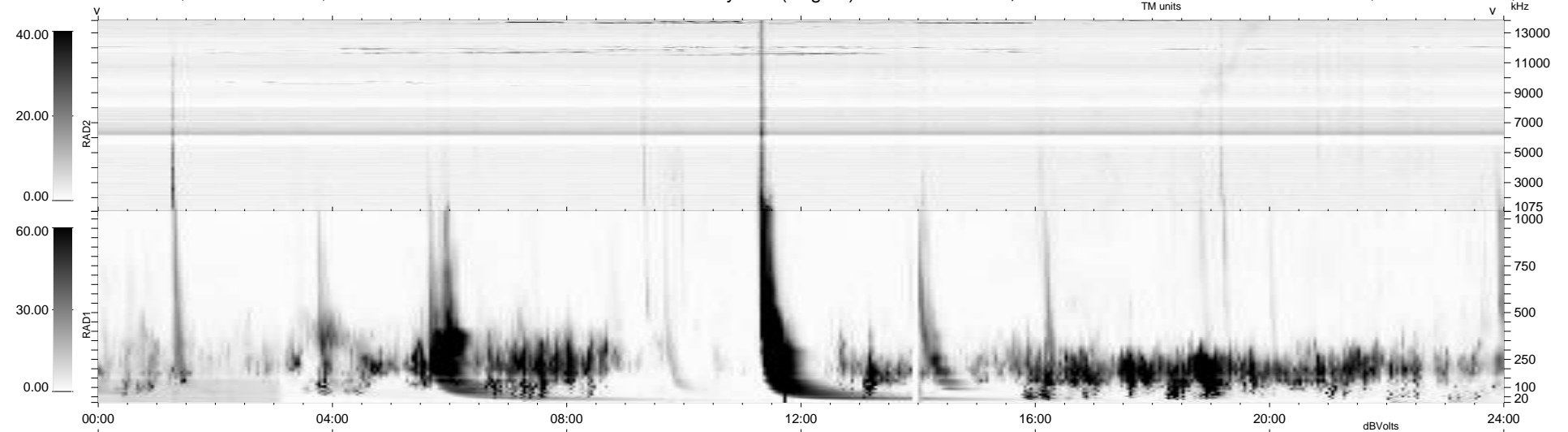


7 bad + 933 good MF/940MF projected (99%) - 0 missing MFs
 Avg interval = 180 secs
 Re = -207.58 (199.40, 55.28, -16.53 GSE)

windlib 2.0b LZ version = v01
 DAILY 2011-03-03 20:35:05
 Re = 208.85 (199.87, 58.39, -16.05 GSE)

WIND/WAVES Summary Plot (Page 1) for 02-MAR-2011, DOY = 61



```

RAD2
Antenna Ey .....
Mode LIN(1) .....
SUM/SEP SEP .....
Toggle OFF .....

RAD1
Antenna Ex .....
Mode LIS(2,4) .....
SUM/SEP SUM .....
Toggle OFF .....

TNR
Antenna ExEy .....
Mode A-32 .....
Sweep ACE .....
  
```