

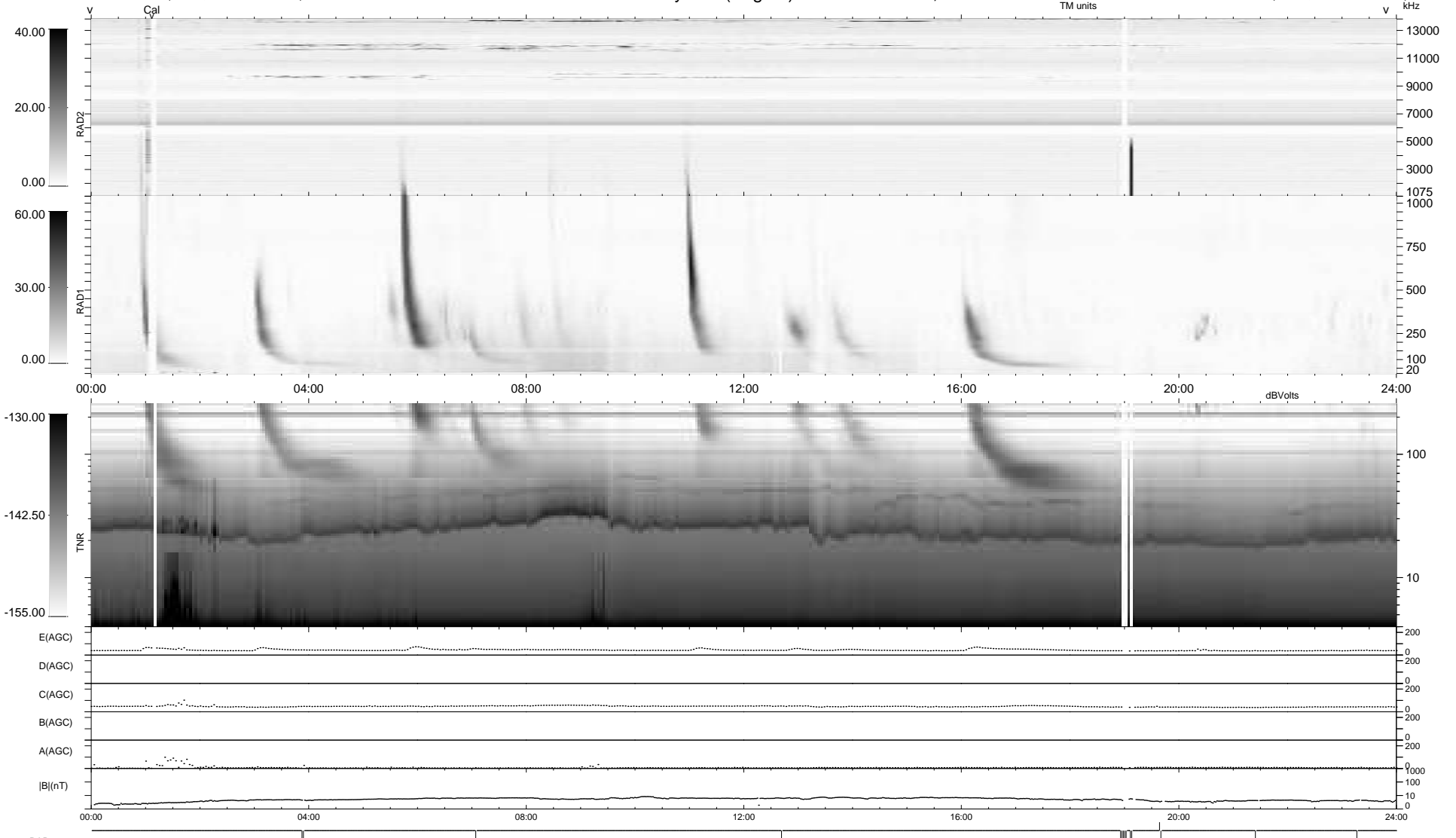
14 bad + 924 good MF/939MF projected (98%) - 1 missing MF
 Avg interval = 180 secs
 Re = 201.79 (197.17, 38.75, -18.52 GSE)

windlib 2.0b

LZ version = v02

WIND/WAVES Summary Plot (Page 1) for 25-FEB-2011, DOY = 56

DAILY 2011-02-28 11:35:06
 Re = 202.84 (197.58, 42.12, -18.19 GSE)



```

RAD2
Antenna  Ey .....
Mode     LIN(1) .....
SUM/SEP  SEP .....
Toggle   OFF .....

RAD1
Antenna  Ex .....
Mode     LIS(2/4) .....
SUM/SEP  SUM .....
Toggle   OFF .....

TNR
Antenna  ExEy .....
Mode     A-32 .....
Sweep    ACE .....
  
```