

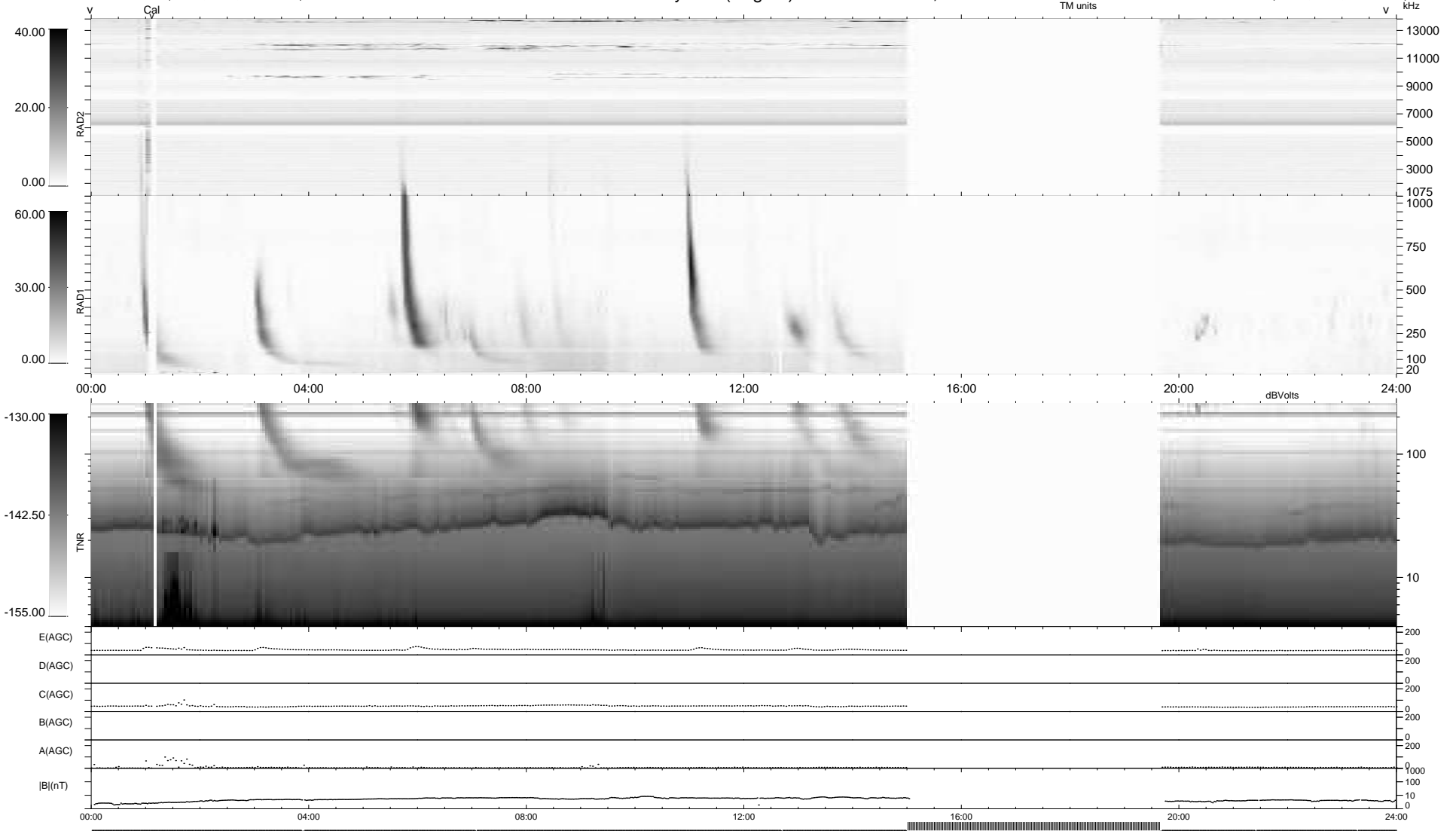
8 bad + 749 good MF/939MF projected (79%) - 182 missing MFs
 Avg interval = 180 secs
 Re = 201.79 (197.17, 38.75, -18.52 GSE)

windlib 2.0b

LZ version = v01

WIND/WAVES Summary Plot (Page 1) for 25-FEB-2011, DOY = 56

DAILY 2011-02-27 01:35:06
 Re = 202.84 (197.58, 42.12, -18.19 GSE)



```

RAD2
Antenna Ey .....
Mode LIN(1) .....
SUM/SEP SEP .....
Toggle OFF .....

RAD1
Antenna Ex .....
Mode LIS(2,4) .....
SUM/SEP SUM .....
Toggle OFF .....

TNR
Antenna ExEy .....
Mode A-32 .....
Sweep ACE .....
  
```