

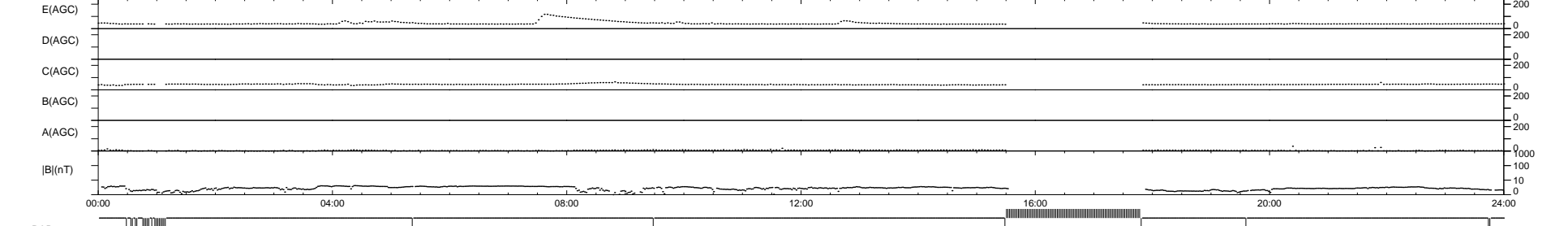
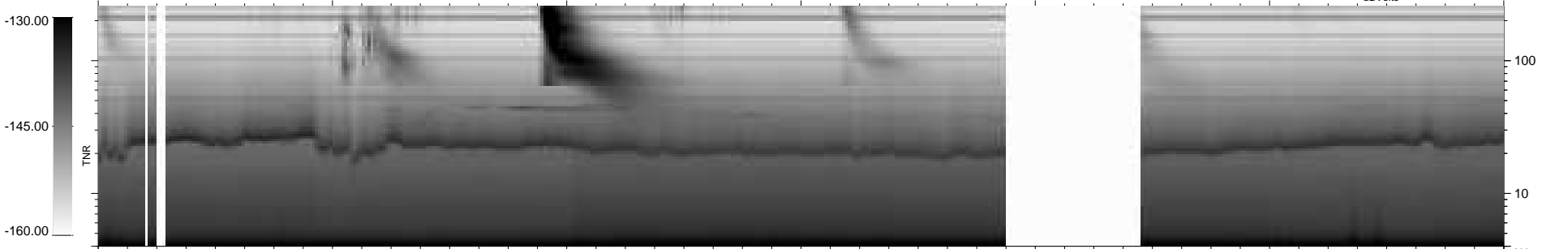
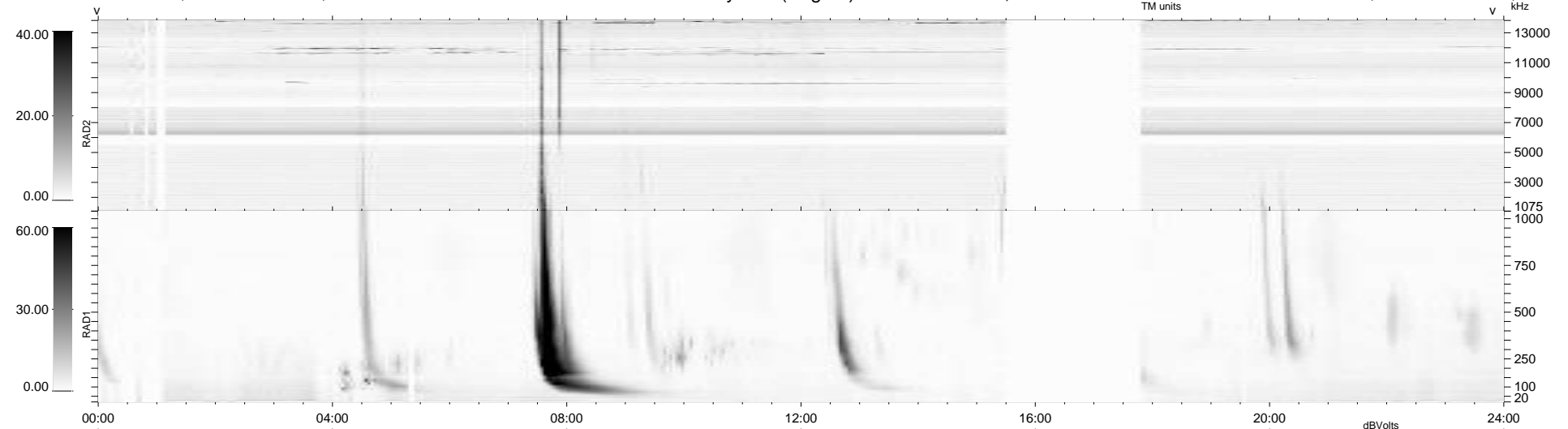
26 bad + 823 good MF/939MF projected (87%) - 90 missing MFs
 Avg interval = 180 secs
 Re = 200.80 (196.77, 35.32, -18.83 GSE)

windlib 2.0b

LZ version = v01

WIND/WAVES Summary Plot (Page 1) for 24-FEB-2011, DOY = 55

DAILY 2011-02-25 09:35:06
 Re = 201.78 (197.16, 38.72, -18.52 GSE)



RAD2
 Antenna Ey
 Mode LIN(1)
 SUM/SEP SEP
 Toggle OFF
 RAD1
 Antenna Ex
 Mode LIS(2,4)
 SUM/SEP SUM
 Toggle OFF
 TNR
 Antenna ExEy
 Mode A-32
 Sweep ACE