

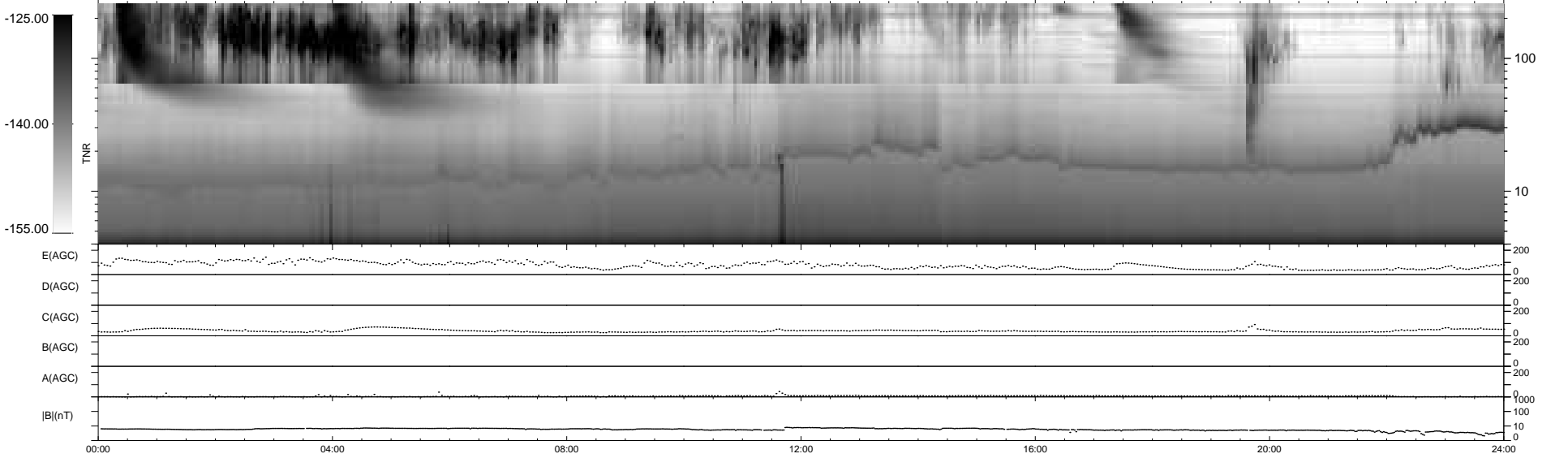
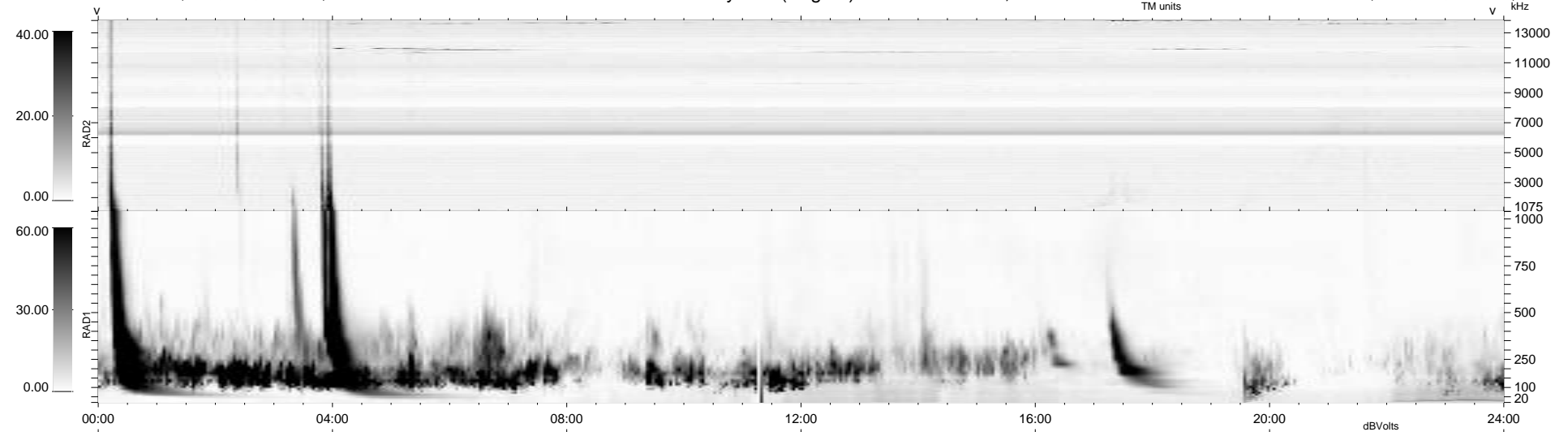
5 bad + 934 good MF/939MF projected (99%) - 0 missing MFs
 Avg interval = 180 secs
 Re = 197.71 (195.56, 21.42, -19.69 GSE)

windlib 2.0b

LZ version = v03

WIND/WAVES Summary Plot (Page 1) for 20-FEB-2011, DOY = 51

DAILY 2011-02-22 12:35:07
 Re = 198.33 (195.79, 24.90, -19.53 GSE)



```

RAD2
Antenna Ey .....
Mode LIN(1) .....
SUM/SEP SEP .....
Toggle OFF .....

RAD1
Antenna Ex .....
Mode LIS(2,4) .....
SUM/SEP SUM .....
Toggle OFF .....

TNR
Antenna ExEy .....
Mode A-32 .....
Sweep ACE .....
  
```