

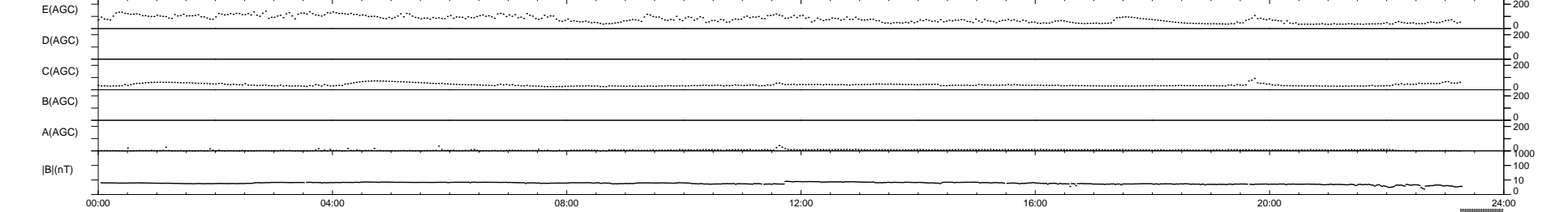
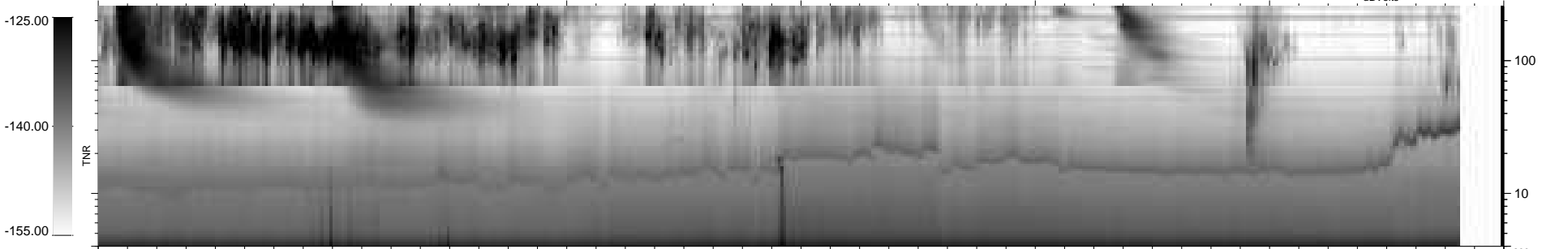
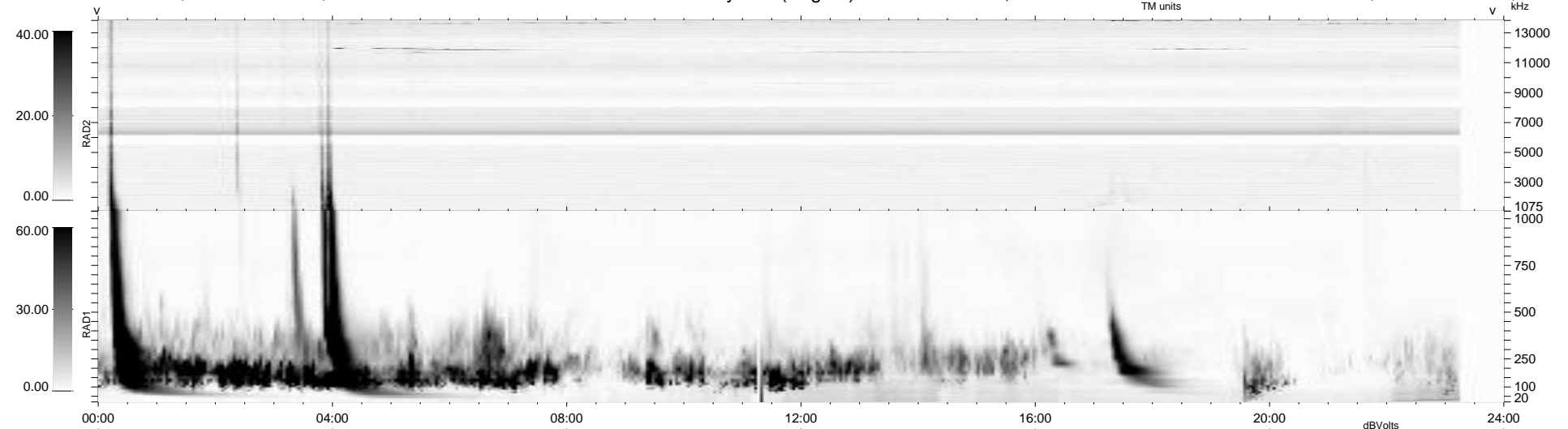
6 bad + 904 good MF/939MF projected (96%) - 29 missing MFs
 Avg interval = 180 secs
 Re = 197.71 (195.56, 21.42, -19.69 GSE)

windlib 2.0b

LZ version = v01

WIND/WAVES Summary Plot (Page 1) for 20-FEB-2011, DOY = 51

DAILY 2011-02-21 12:35:05
 Re = 198.33 (195.79, 24.90, -19.53 GSE)



RAD2
 Antenna Ey
 Mode LIN(1)
 SUM/SEP SEP
 Toggle OFF
 RAD1
 Antenna Ex
 Mode LIS(2,4)
 SUM/SEP SUM
 Toggle OFF
 TNR
 Antenna ExEy
 Mode A-32
 Sweep ACE